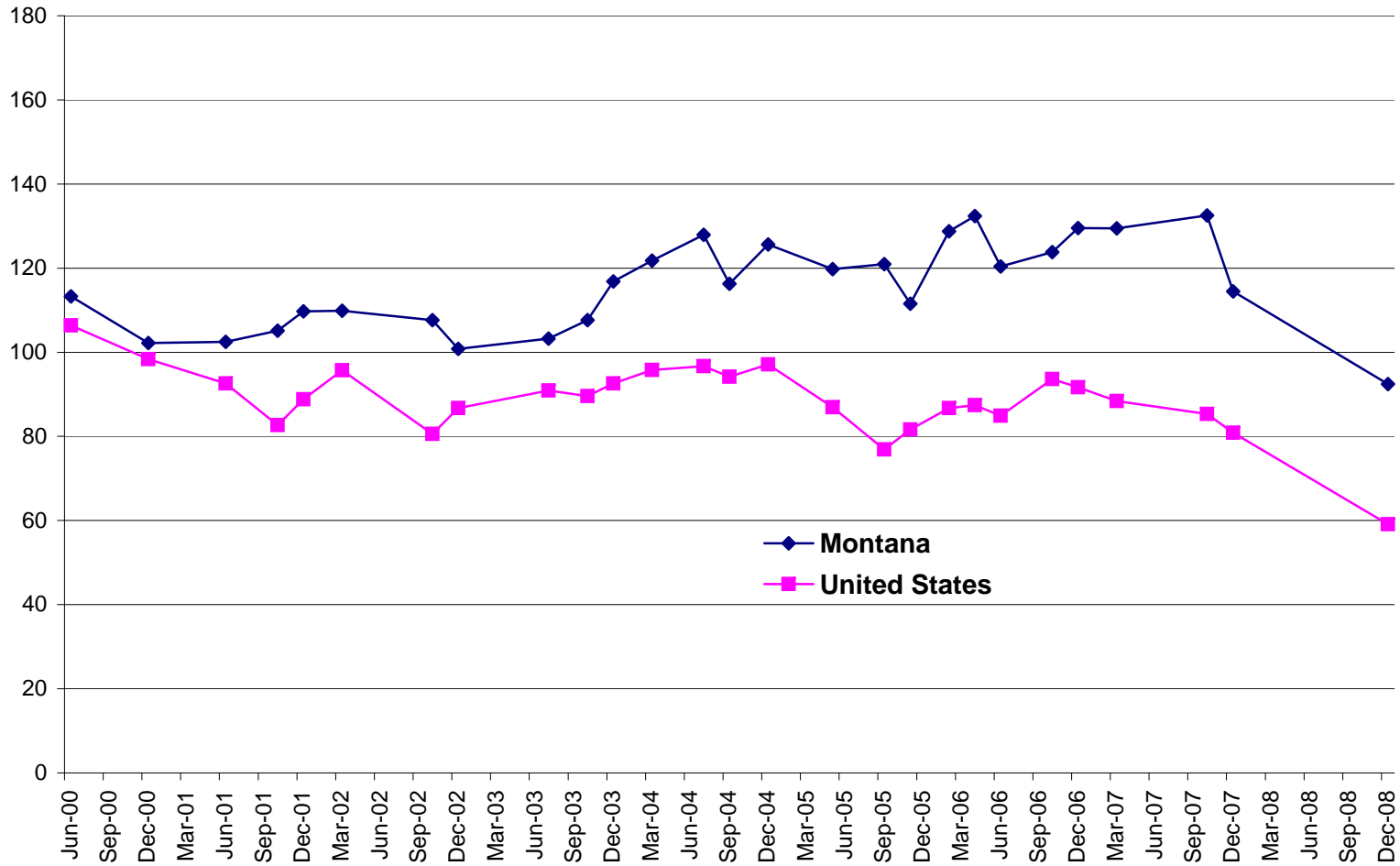
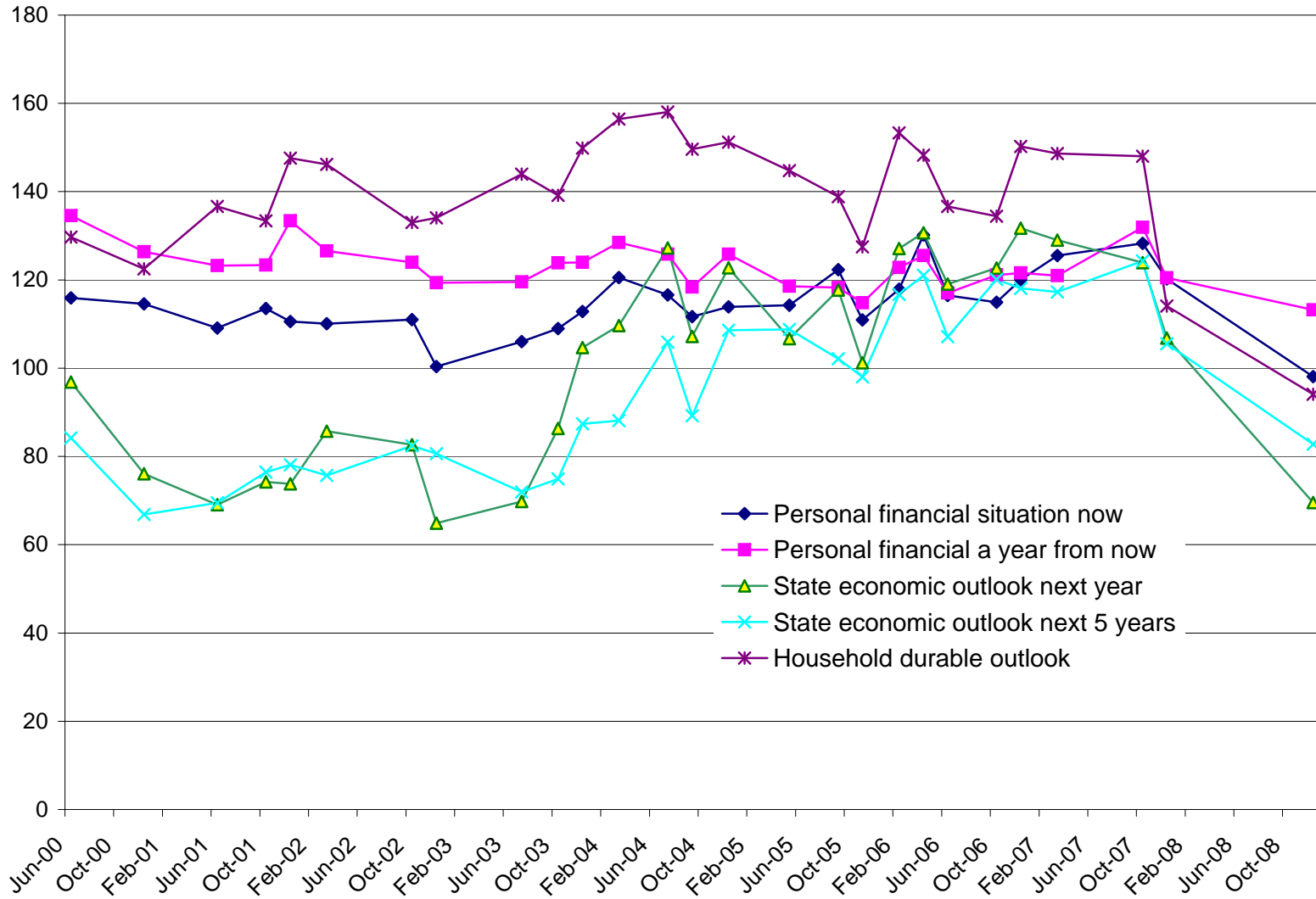


## Index of Consumer Sentiment Montana and US

1982=100



**Montana Consumer Sentiment Index Components**  
**Source: University of Montana BBER**



	Overall indexes		Montana Components				Durable goods
	US	Montana	Personal now	Personal next year	State next year	State next 5 years	
Jun-00	106.40	113.29	115.9	134.5	96.8	84.2	129.7
Dec-00	98.40	102.23	114.6	126.4	76.1	66.8	122.5
Jun-01	92.60	102.45	109.1	123.2	69.0	69.5	136.6
Oct-01	82.70	105.16	113.5	123.3	74.2	76.4	133.4
Dec-01	88.80	109.73	110.6	133.4	73.8	78.1	147.6
Mar-02	95.70	109.87	110.1	126.5	85.7	75.7	146.2
Oct-02	80.60	107.60	111.0	124.0	82.6	82.4	133.0
Dec-02	86.70	100.80	100.4	119.4	64.9	80.6	134.1
Jul-03	90.90	103.23	106.0	119.6	69.8	72.0	144.0
Oct-03	89.60	107.64	109.0	123.9	86.3	74.9	139.2
Dec-03	92.60	116.84	112.8	124.0	104.7	87.4	149.9
Mar-04	95.80	121.78	120.5	128.5	109.7	88.1	156.4
Jul-04	96.70	127.92	116.6	125.8	127.3	105.9	158.1
Sep-04	94.20	116.31	111.7	118.4	107.2	89.3	149.6
Dec-04	97.10	125.62	113.9	125.8	122.7	108.6	151.2
May-05	86.90	119.74	114.3	118.6	106.7	108.8	144.8
Sep-05	76.90	120.99	122.3	118.3	117.7	102.1	138.8
Nov-05	81.60	111.55	110.9	114.8	101.2	98.1	127.5
Feb-06	86.70	128.77	117.9	122.8	127.1	116.7	153.3
Apr-06	87.40	132.37	130.2	125.5	130.7	121.0	148.3
Jun-06	84.90	120.37	116.4	117.0	119.1	107.1	136.6
Oct-06	93.60	123.80	114.9	121.1	122.7	120.1	134.4
Dec-06	91.70	129.53	120.0	121.6	131.7	118.1	150.2
Mar-07	88.40	129.48	125.5	121.0	129.0	117.3	148.6
Oct-07	85.30	132.50	128.3	131.9	123.9	124.3	148.0
Dec-07	80.90	114.50	120.3	120.5	106.8	105.5	114.1
Dec-08	59.10	92.42	98.1	113.2	69.6	82.8	94.1