

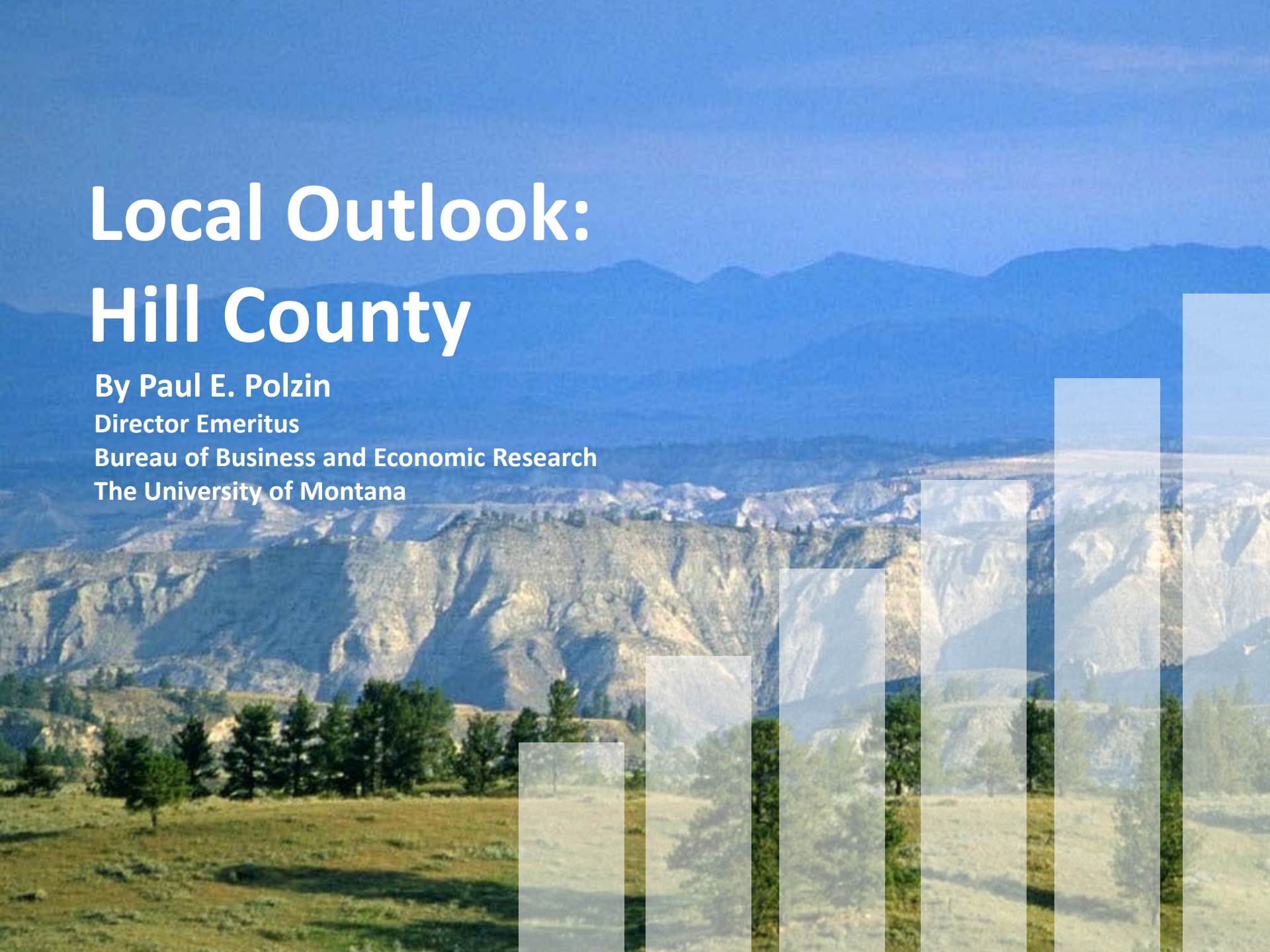
# Local Outlook: Hill County

By Paul E. Polzin

Director Emeritus

Bureau of Business and Economic Research

The University of Montana



# Recession Scorecard

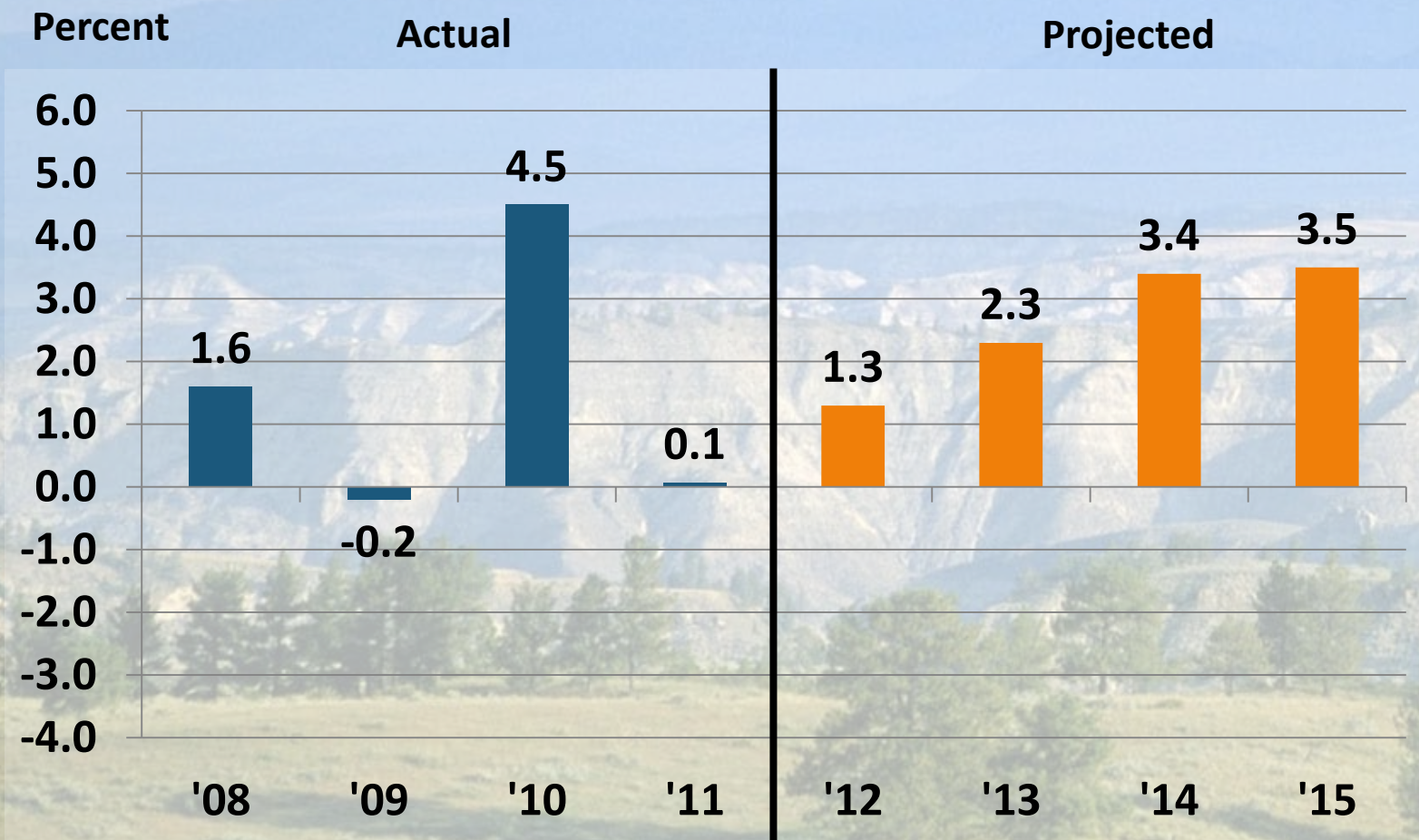
	Duration (Years)	Severity (% Change)
Lewis & Clark County	<b>What Recession?</b>	<b>What Recession?</b>
Cascade County		
Hill County	1	-0.4%
Yellowstone County	1	-1.5%
Fergus County	1	-2.0
Missoula County	3-4	-4.9%
Gallatin County	2	-7.9%
Flathead County	4	-10.2%



# Hill County's Economic Base 2009-2011

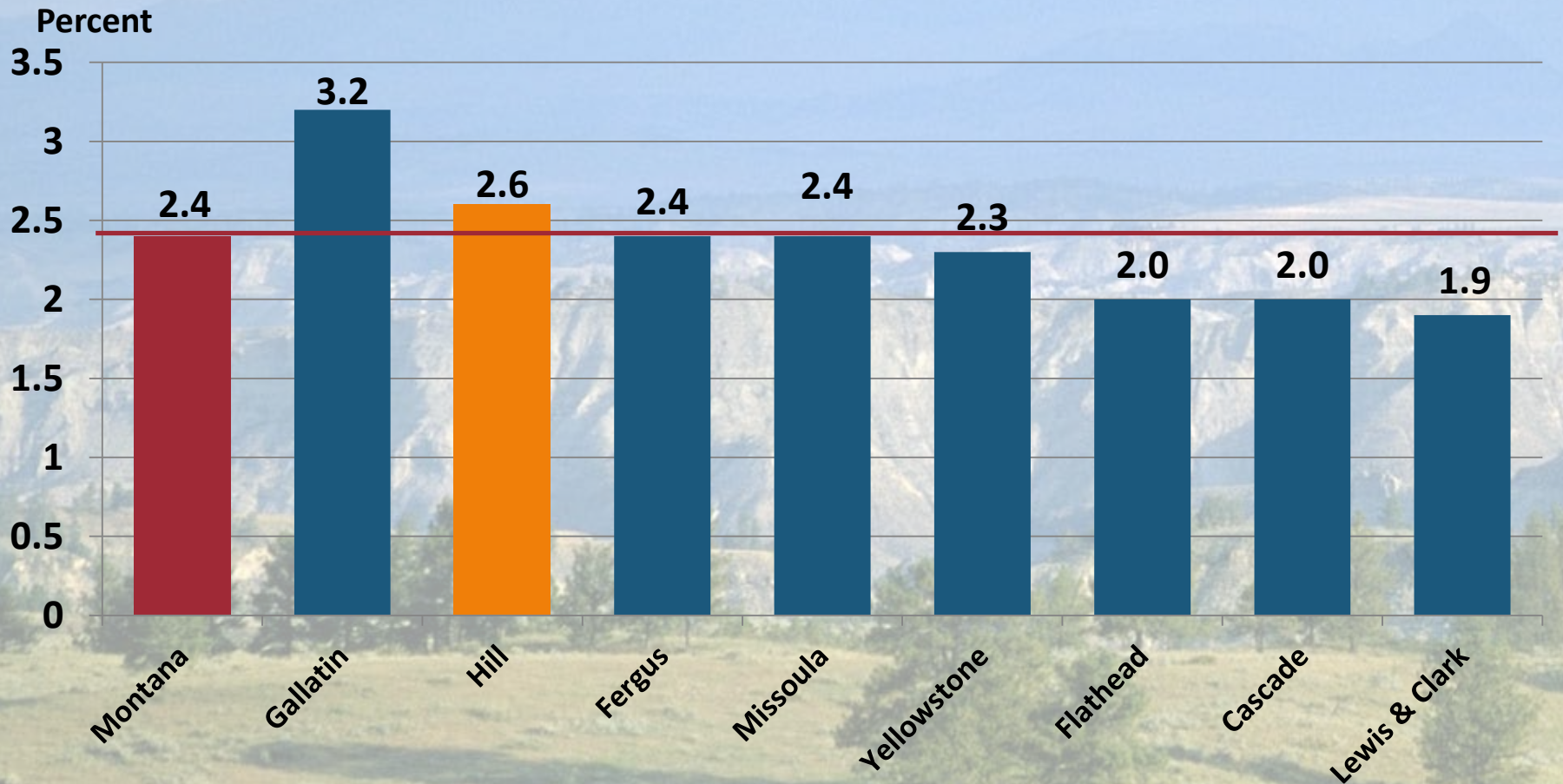
• Travel, Other	4%	Modest Growth
• Manufacturing, Communication	7%	Stable
• Oil & Gas	9%	Growth
• Federal Government	12%	Stable, at best
• State Government	13%	Pay Freeze
• Ag and Related	28%	Continued Strong
• Railroad	27%	Energy Growth

# Actual and Projected Change in Nonfarm Earnings, Hill County, 2008-2015





# Projected Annual Percent Change in Nonfarm Labor Income (in Constant Dollars) 2011-2015



# Montana's Energy Transportation Systems

The image shows a wide, scenic view of a Montana landscape. In the foreground, there is a grassy field with several scattered evergreen trees. The middle ground consists of rolling hills and a range of rugged, light-colored mountains. The background features a series of blue, hazy mountain ranges under a clear, bright blue sky. The overall scene is a typical representation of the natural beauty of Montana.



# Coal Reserves and Production

	Reserves (Billions of Tons)	
<b>Montana</b>	<b>119.0</b>	
<b>Wyoming</b>	<b>61.0</b>	

A map of the United States showing the Powder River Coal Market Areas. The map features a network of black lines representing rivers and a grid of thin grey lines representing state boundaries. Two specific regions in the western United States are highlighted with orange shapes: a circular area in the northern part of the region and a rectangular area below it. A dark red banner with white text is overlaid on the bottom left of the map.

# Powder River Coal Market Areas



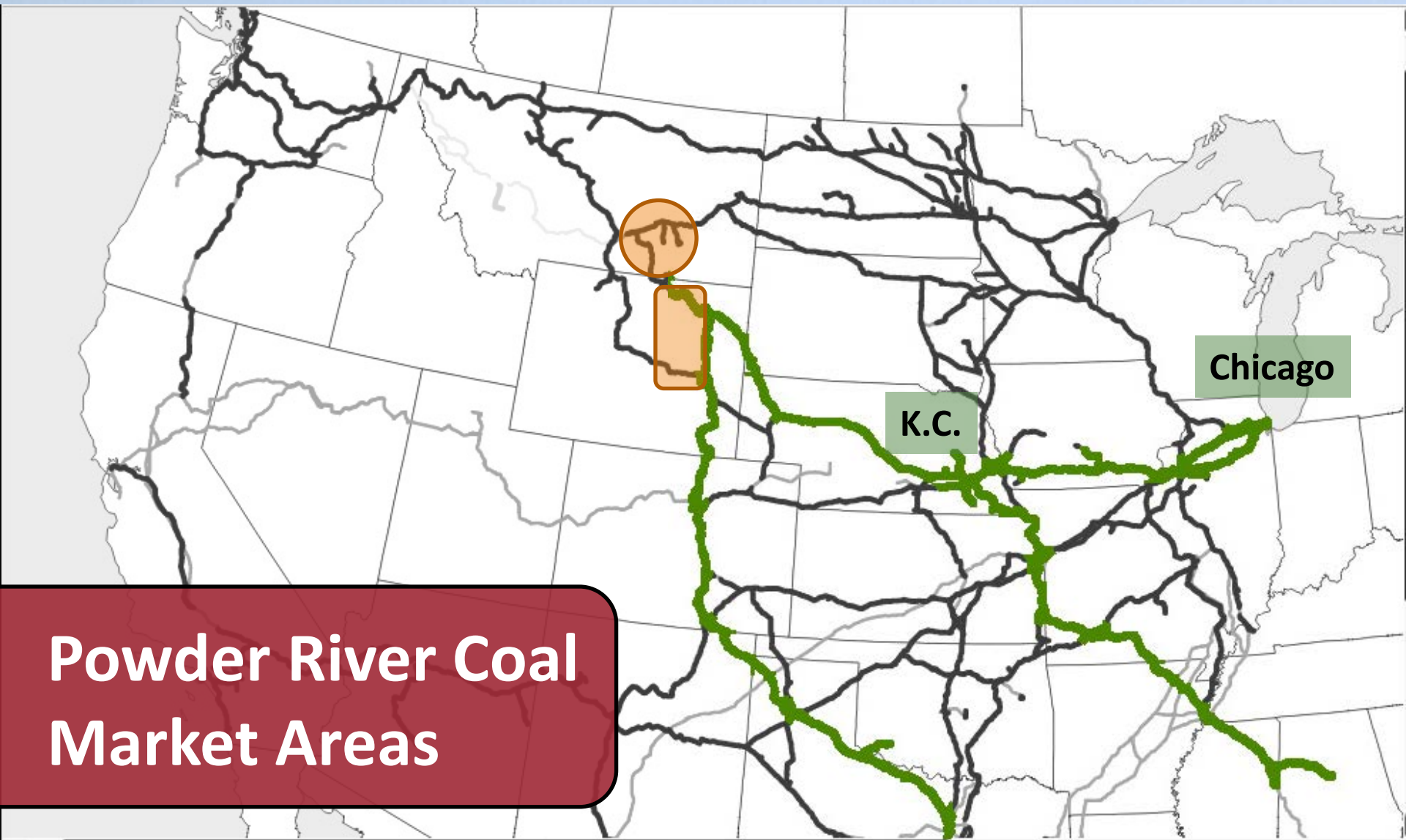
# Powder River Coal Market Areas

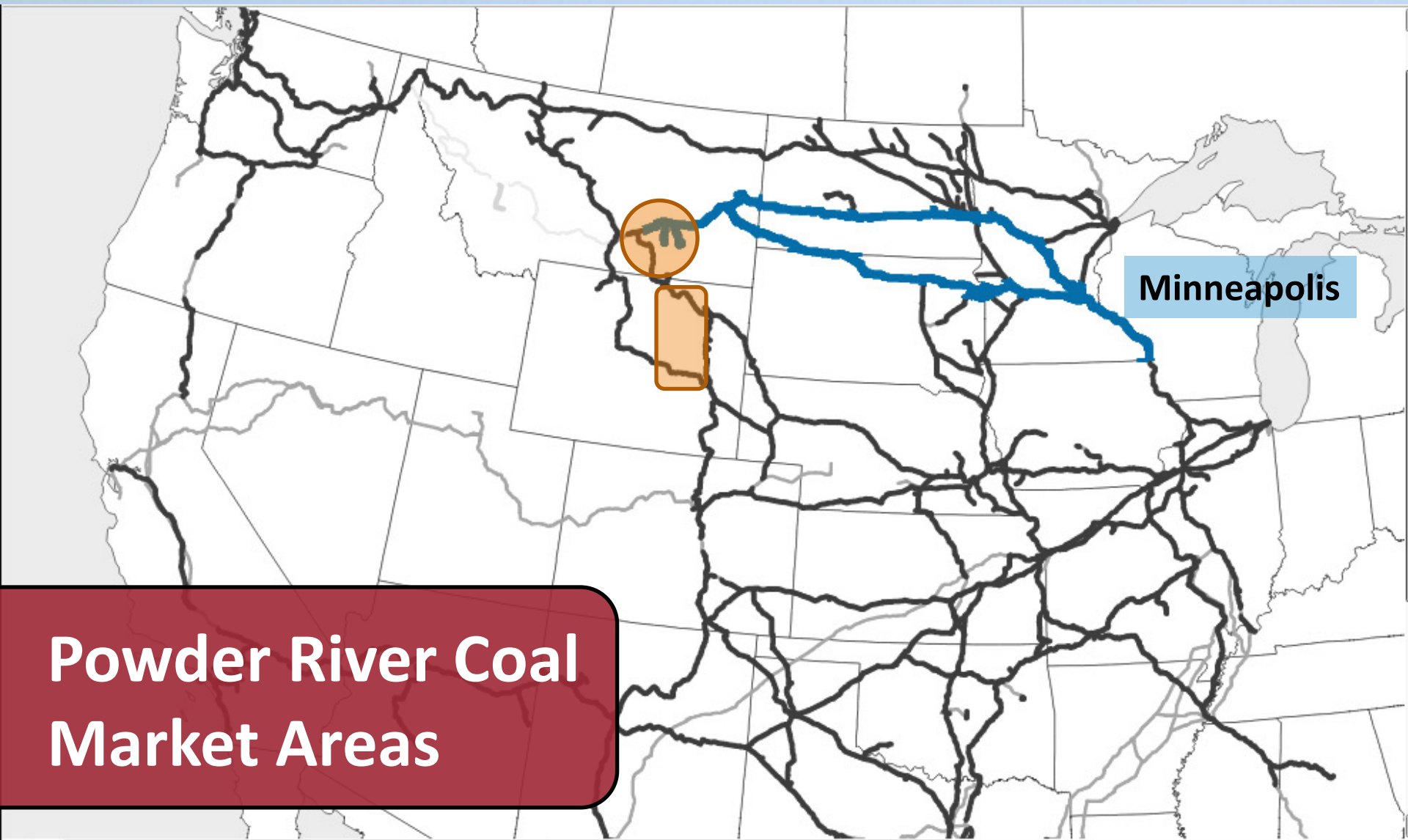


K.C.

Chicago

Houston



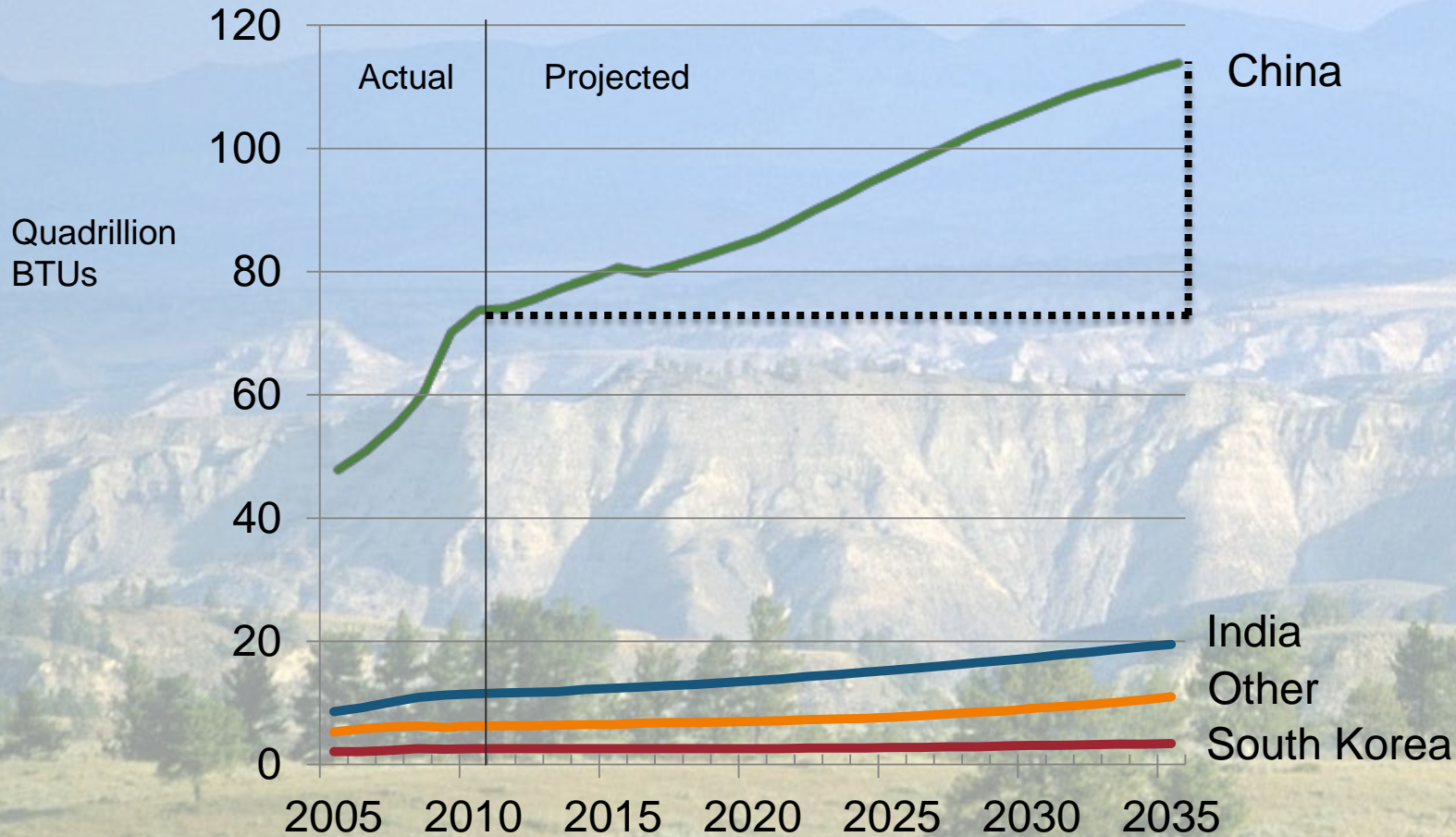


Minneapolis

**Powder River Coal  
Market Areas**



# Actual and Projected Asian Coal Consumption



Vancouver

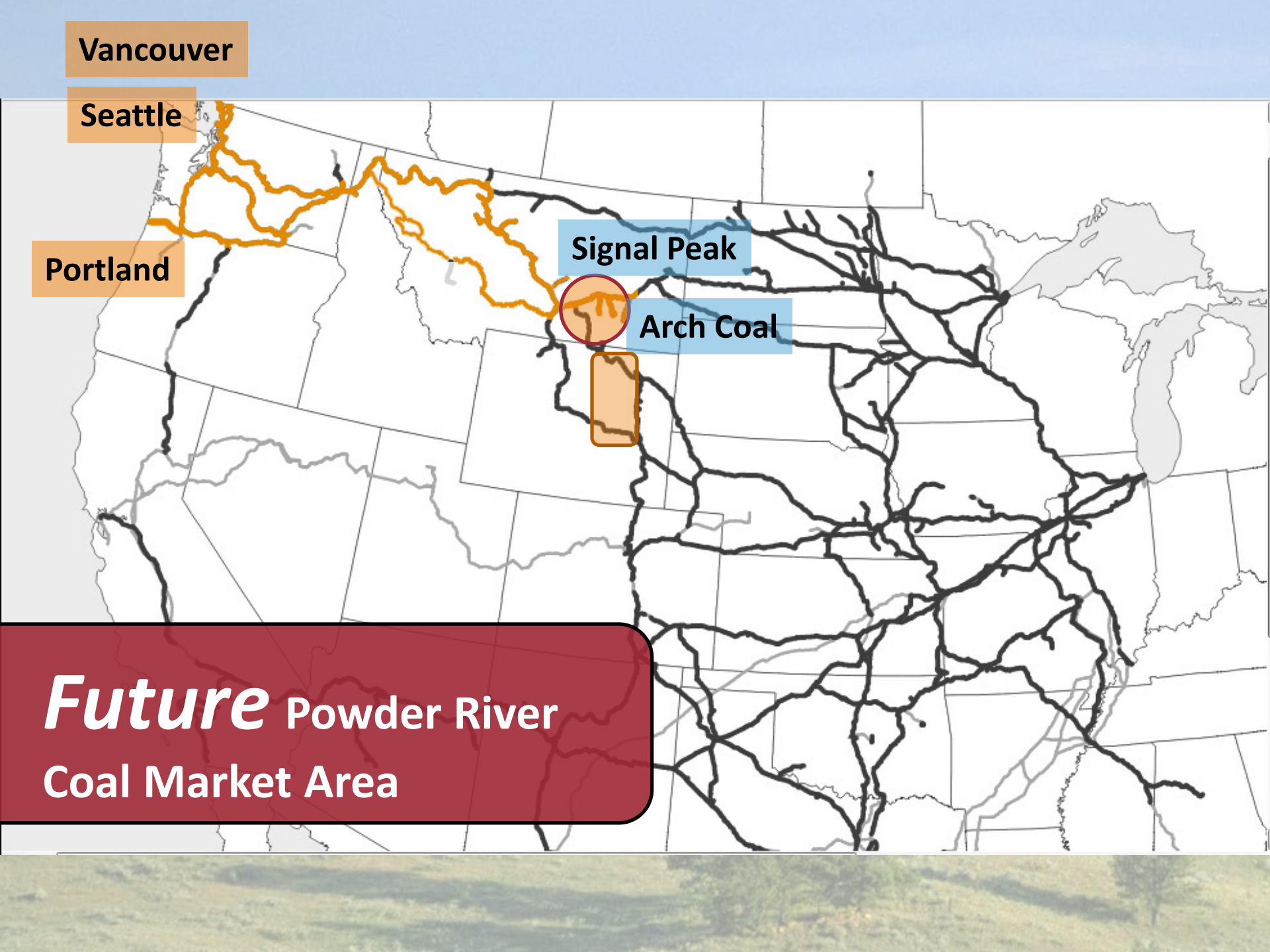
Seattle

Portland

Signal Peak

Arch Coal

*Future* Powder River  
Coal Market Area





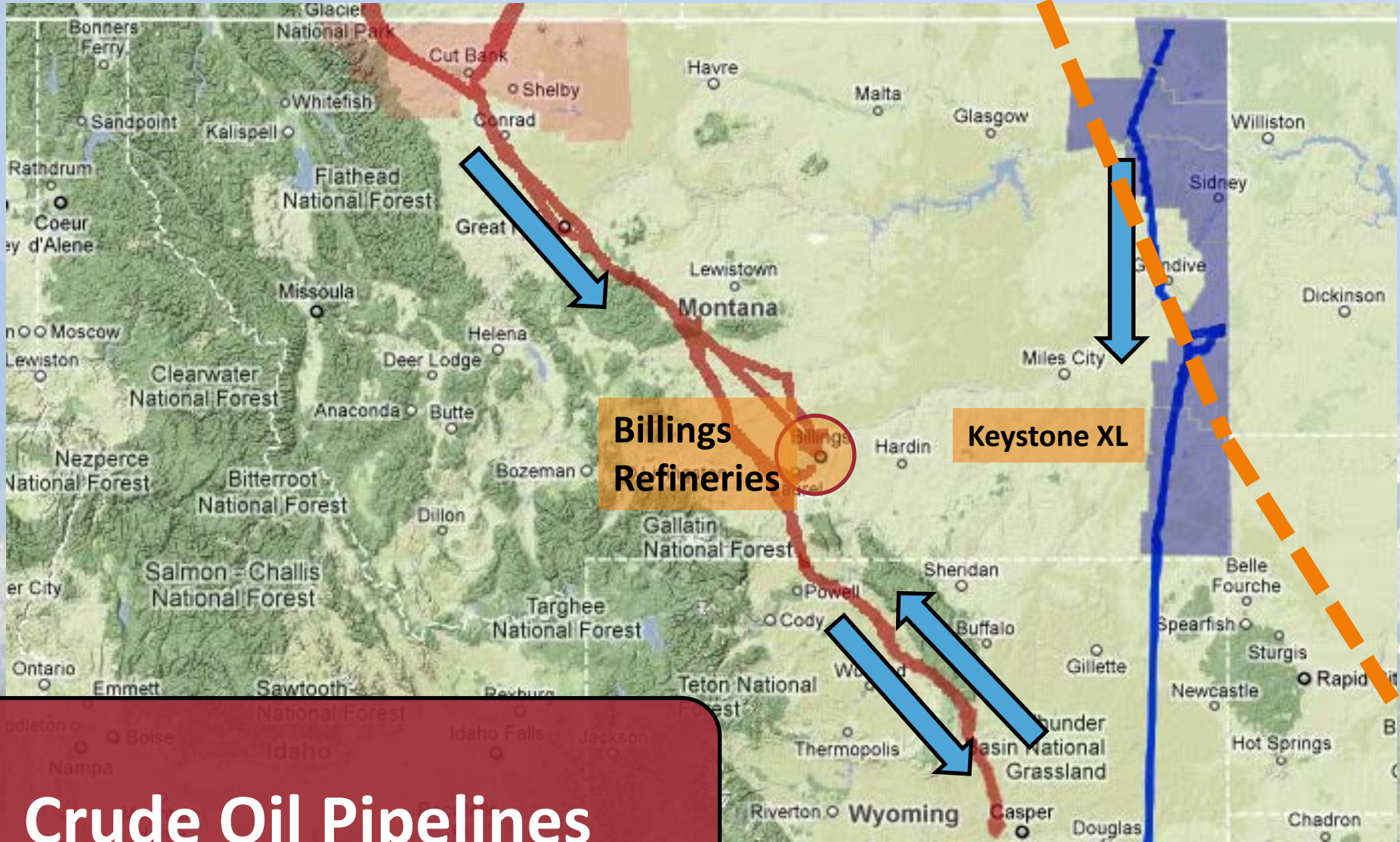
# Montana Crude Oil, 2010

	Barrels

**Source: Montana Oil and Gas Conservation Division.**



Edmonton

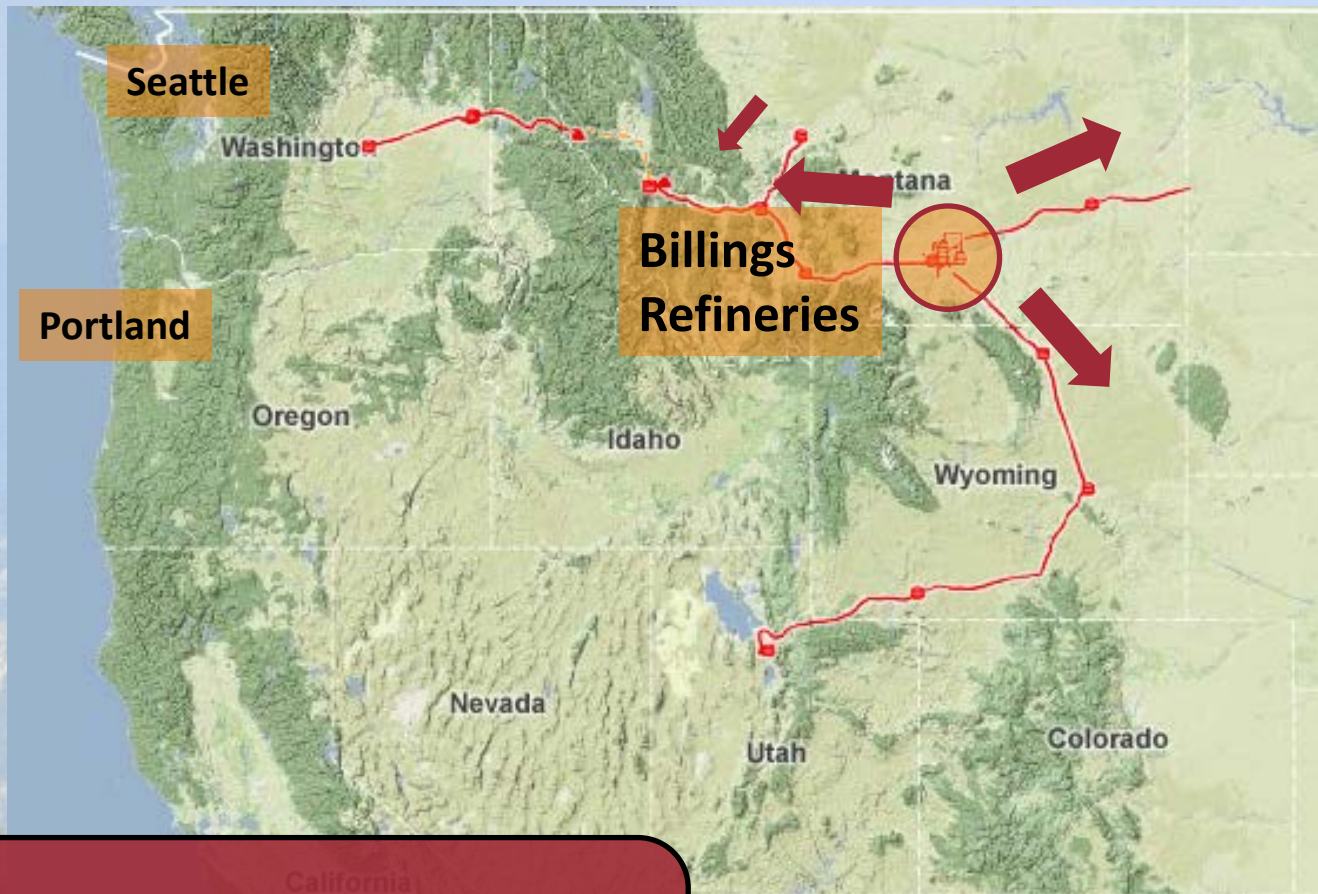


Billings  
Refineries

Keystone XL

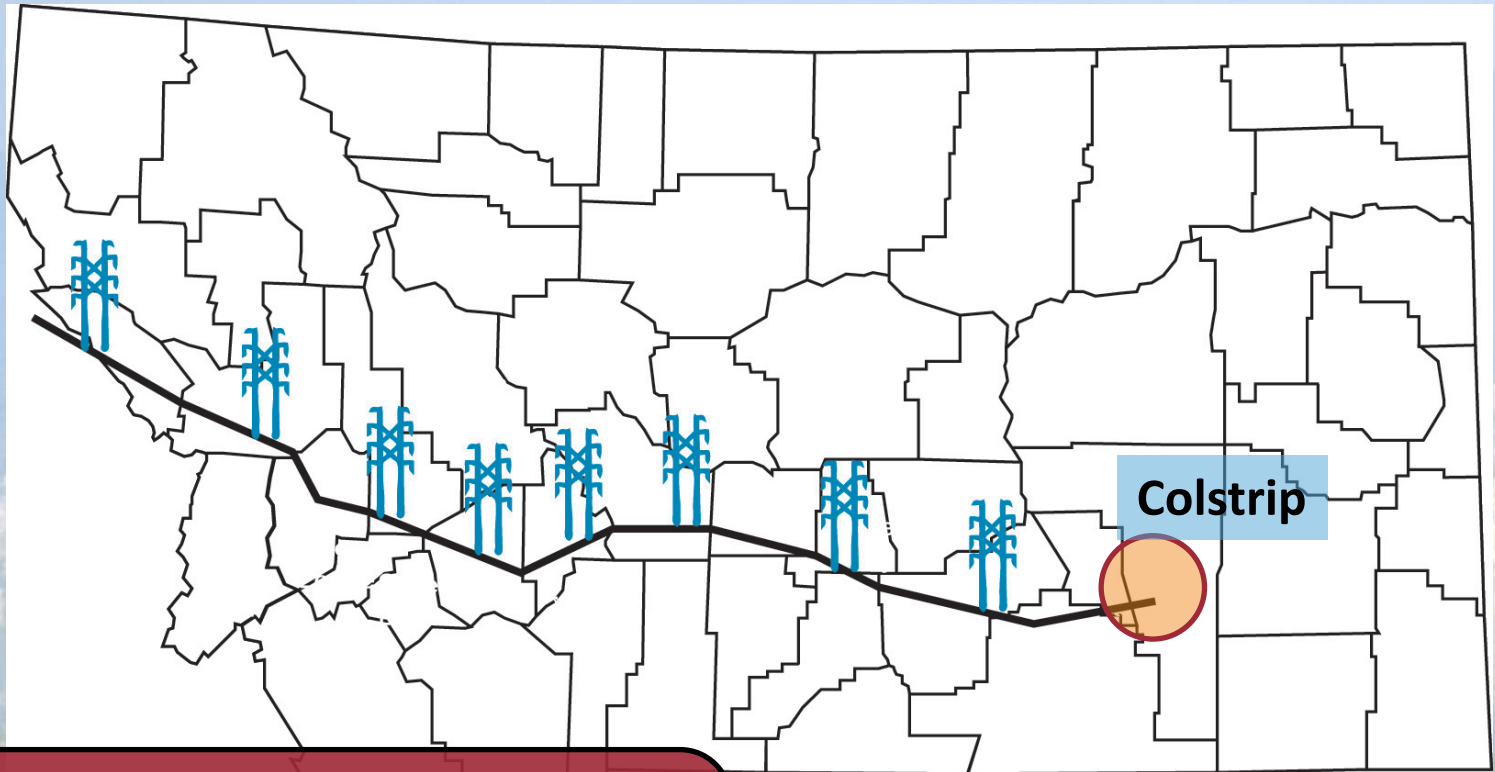
Crude Oil Pipelines





©2011 Google - Map data ©2011 Europa Technologies, Goog

# Petroleum Product Pipeline

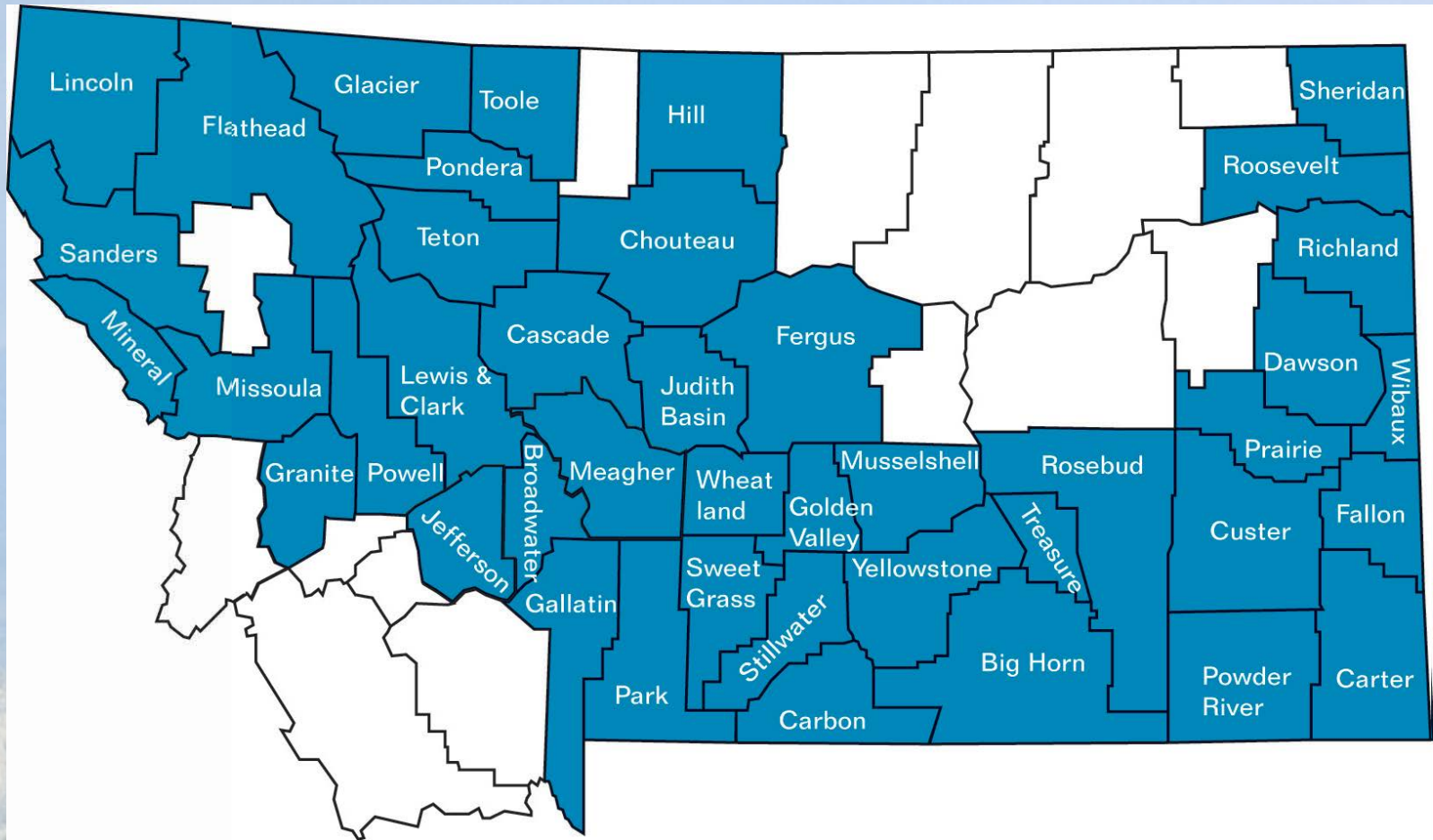


**Colstrip 500 KV  
Transmission Line**



# Transmission Line Property Taxes to Counties

County	Estimated Taxes
Rosebud	\$492,000
Treasure	\$952,000
Big Horn	\$241,000
<b>Yellowstone</b>	<b>\$1,467,000</b>
Golden Valley	\$372,000
Stillwater	\$373,000
Wheatland	\$615,000
Meagher	\$865,000
Broadwater	\$563,000
Jefferson	\$401,000
Powell	\$322,000
Granite	\$401,000
<b>Missoula</b>	<b>\$568,000</b>
Mineral	\$784,000
<b>TOTAL</b>	<b>\$8,417,000</b>



# Montana's Energy Transportation Systems





Questions?