

---

# OUTLOOK 2012 PRESENTATIONS

The University of Montana Bureau of Business and Economic Research

# Fergus County



## Inside:

National, State, and Local Forecasts • Agriculture • Energy  
Forest Products • Health Care • Housing  
Manufacturing • Travel and Recreation

Published with the support of the Montana Chamber of Commerce

---

# OUTLOOK 2012

Published with the support of the Montana Chamber of Commerce

## Advisory Board



**Elizabeth Ching**  
Office of Sen. Max Baucus

**Barbara Stiffarm**  
Opportunity Link, Inc.

**John Goodnow**  
Benefis Health System

**Timothy Waldo**  
First Security Bank

**Heather McDowell**  
PPL Montana

**Larry White**  
The University of Montana

**Chuck Roady**  
F.H. Stoltze Land and  
Lumber Co.

## Outlook 2012



**Larry Gianchetta**  
Dean, School of Business  
Administration

**Patrick M. Barkey**  
Director, Bureau of Business  
and Economic Research

**Christina Henderson**  
Marketing Director  
Seminar Coordinator

**Shannon Furniss**  
Communications Director

**Jayne Fraser & Nate Hegyi**  
Publications Assistants

**BUREAU OF  
BUSINESS  
AND ECONOMIC  
RESEARCH**

School of  
**BUSINESS  
ADMINISTRATION**  
The University of Montana

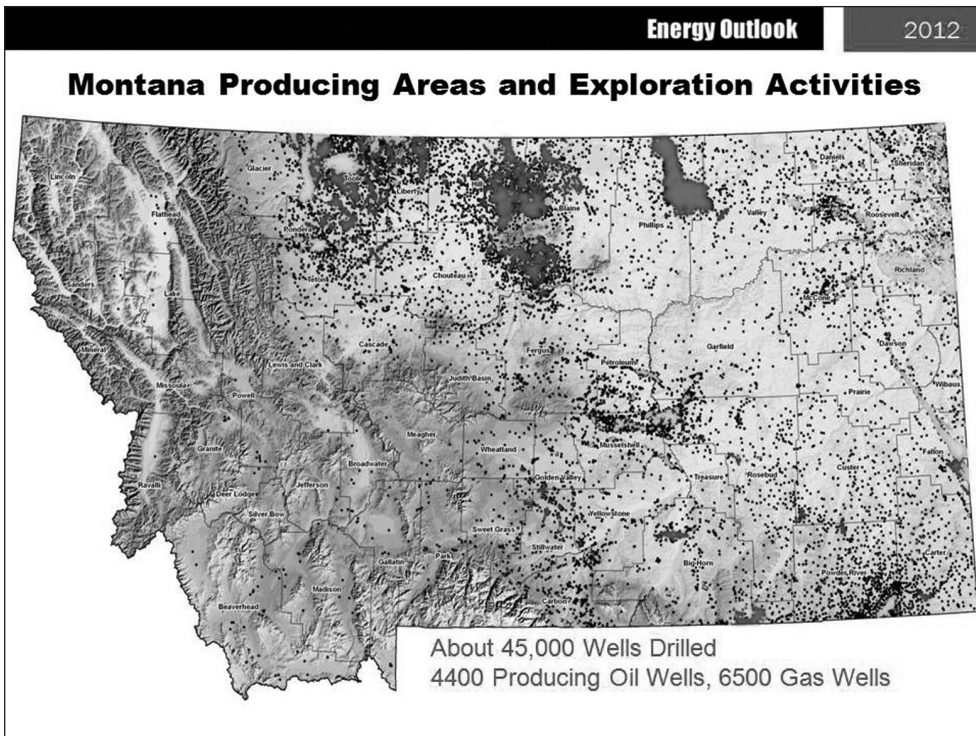
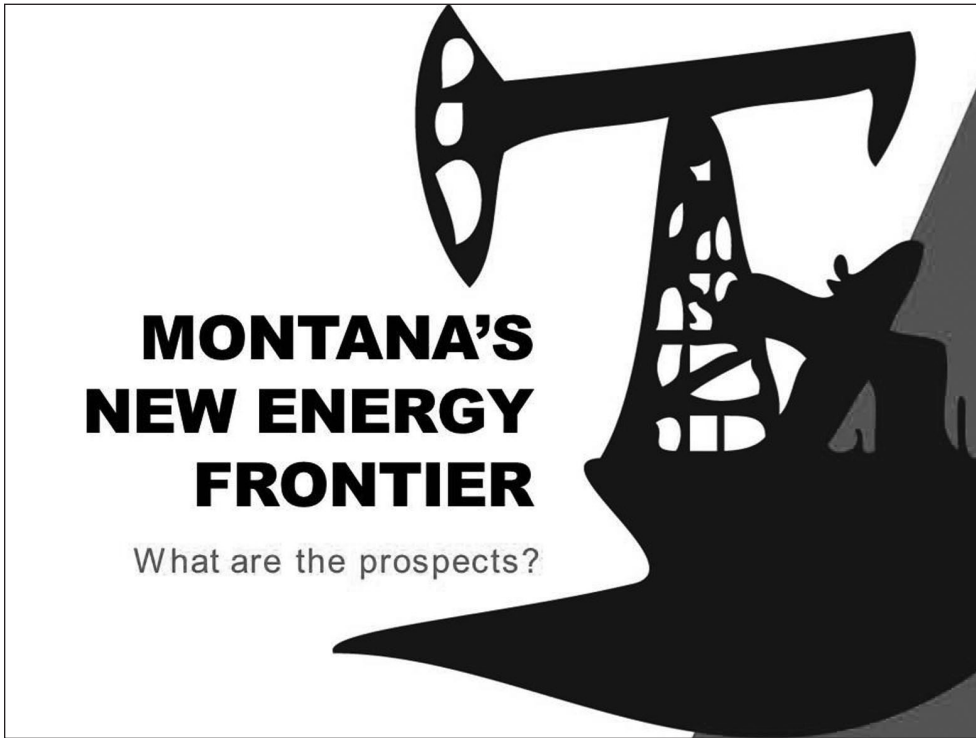


# Table of Contents

---

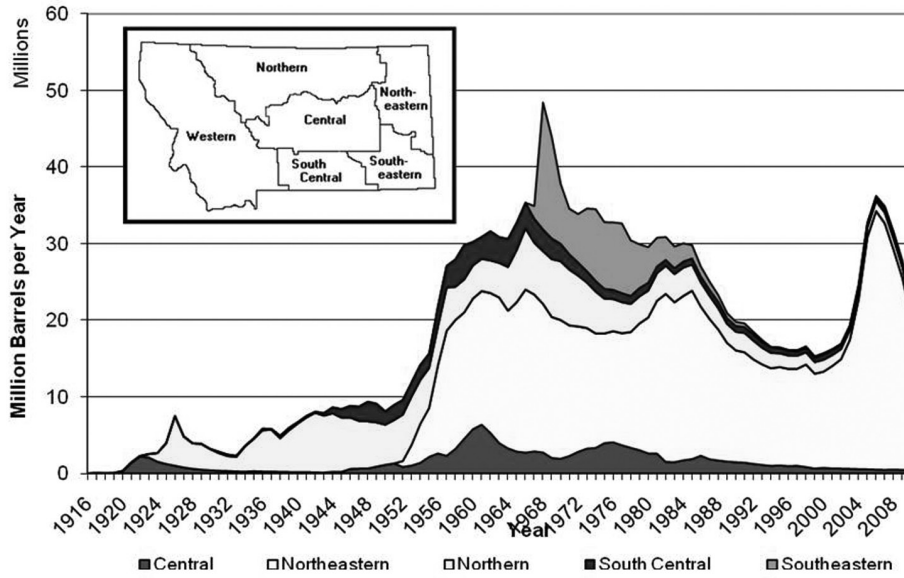
## 2012 Economic Outlook

<b>Energy Outlook</b> <i>by Tom Richmond</i>	<b>1</b>
<b>National and State Outlooks</b> <i>by Patrick M. Barkey</i>	<b>13</b>
<b>Local Economic Outlook</b> <i>by Paul E. Polzin</i>	<b>26</b>
<b>Travel and Recreation Outlook</b> <i>by Norma P. Nickerson</i>	<b>35</b>
<b>Health Care Outlook</b> <i>by Gregg Davis</i>	<b>42</b>
<b>Agricultural Outlook</b> <i>by George Haynes</i>	<b>52</b>
<b>Housing Outlook</b> <i>by Scott Rickard</i>	<b>68</b>
<b>Manufacturing Outlook</b> <i>by Todd A. Morgan</i>	<b>81</b>
<b>Forest Products Outlook</b> <i>by Todd A. Morgan</i>	<b>86</b>

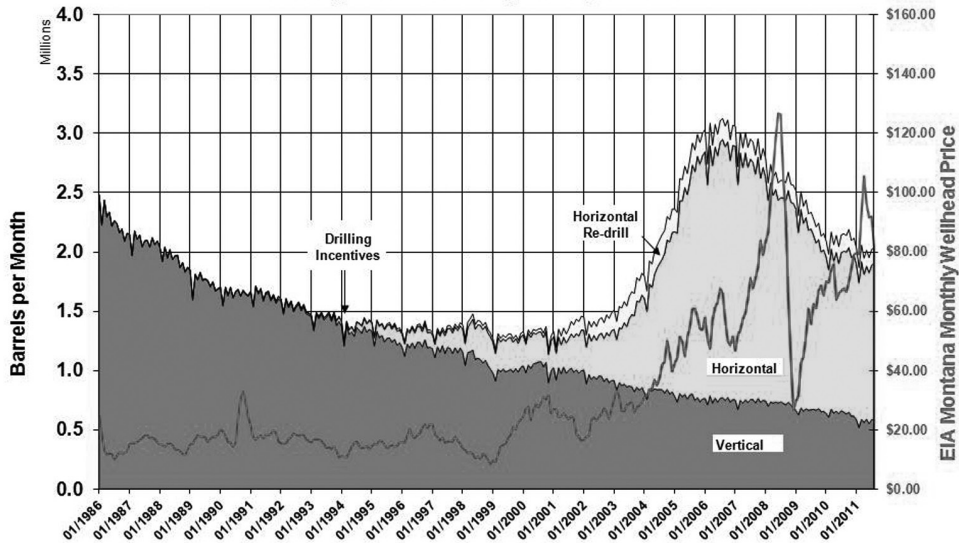


**HISTORICAL PRODUCTION**

Statewide Oil Production History, 1916 through 2010



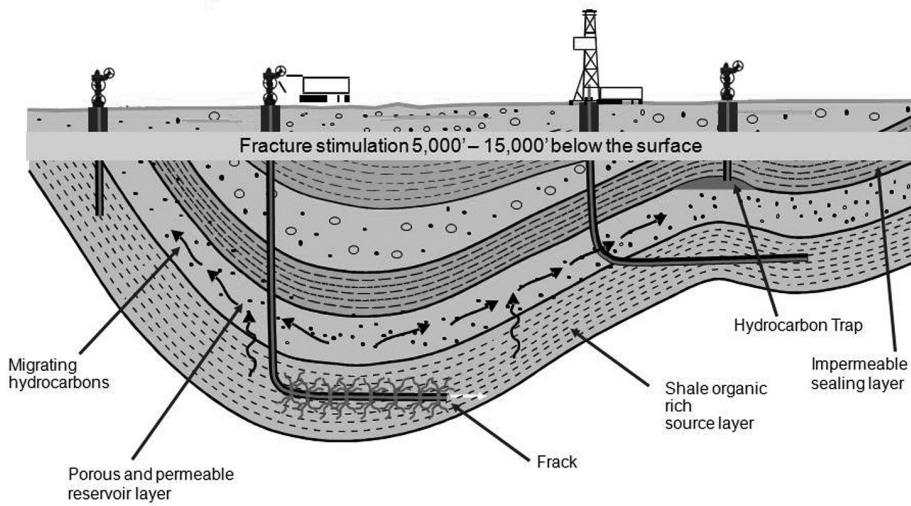
**Monthly Oil Production, Vertical vs. Horizontal Wells**  
January 1986 through August 2011



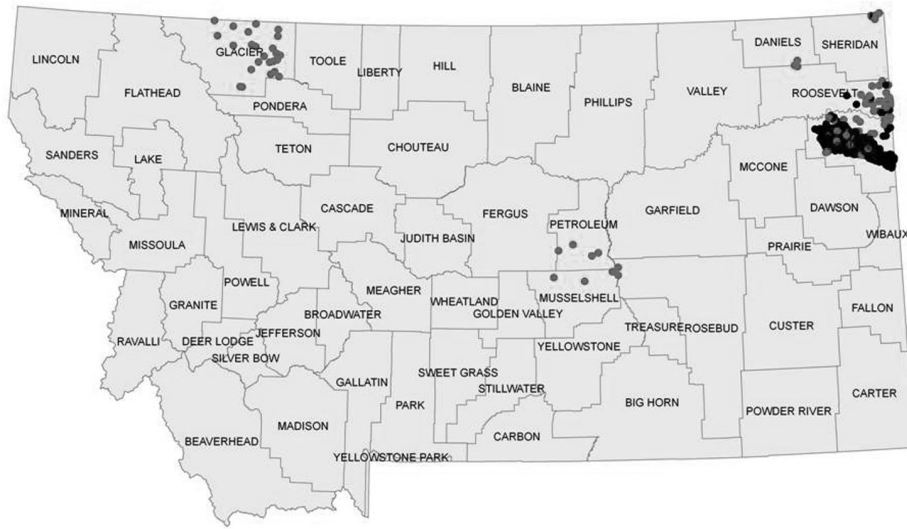


## Technology's Role

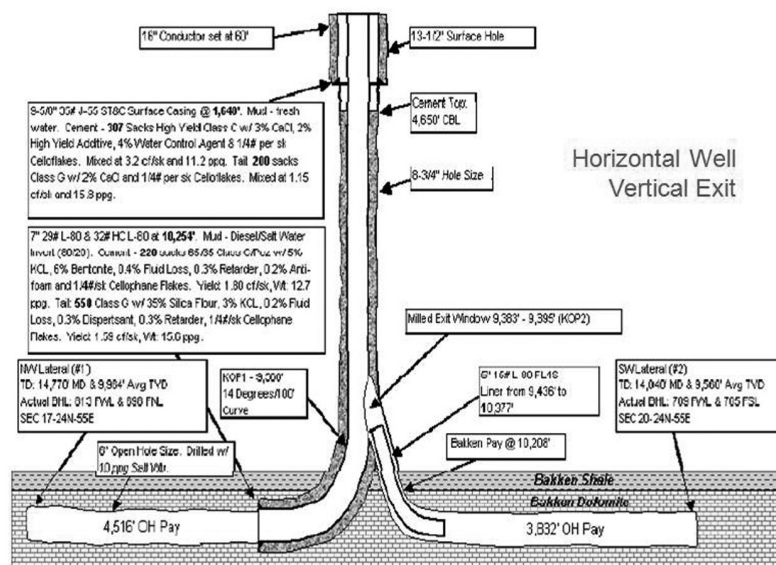
Why the revolution?



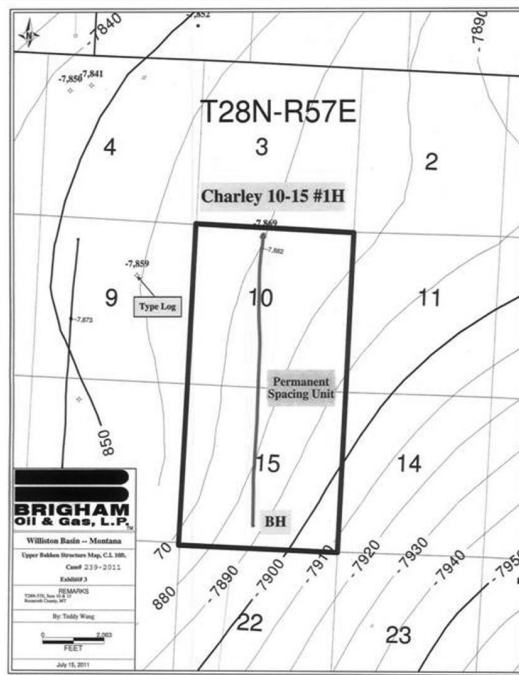
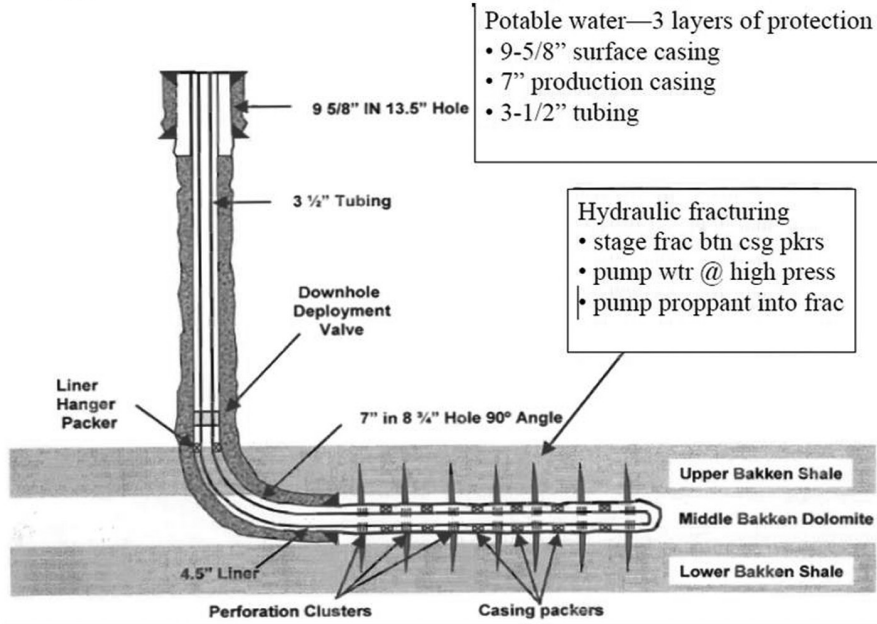
### Horizontal Oil Shale Activity

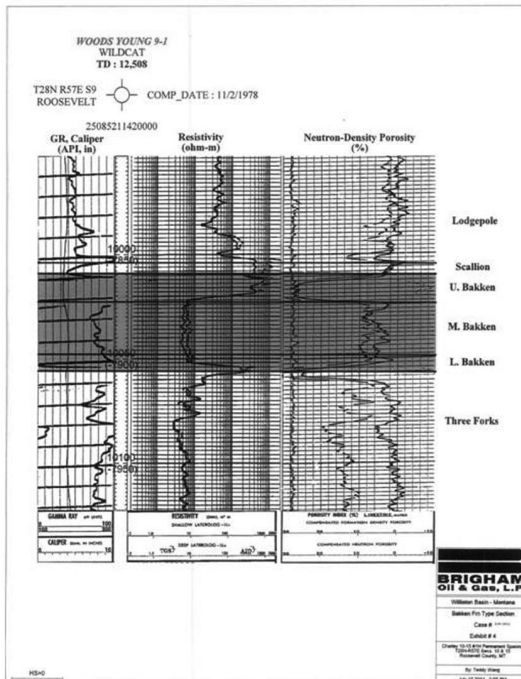


### Vertical Casing Exit



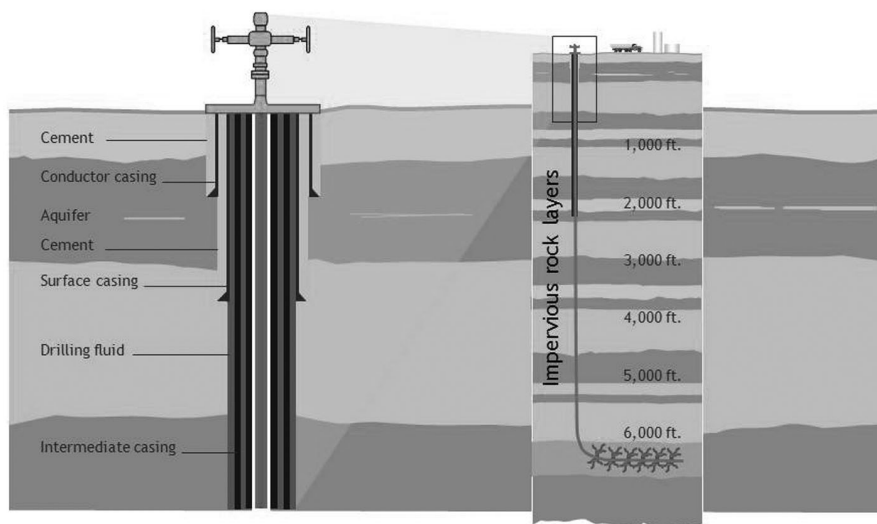
### Typical Bakken Wellbore Diagram





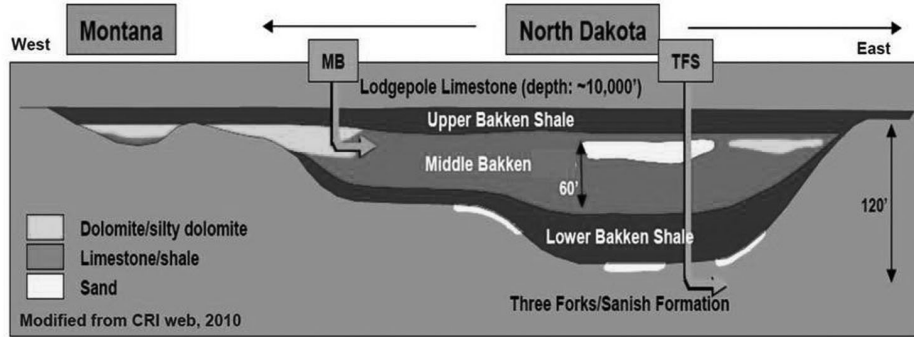
## Groundwater Protection

through proper well construction





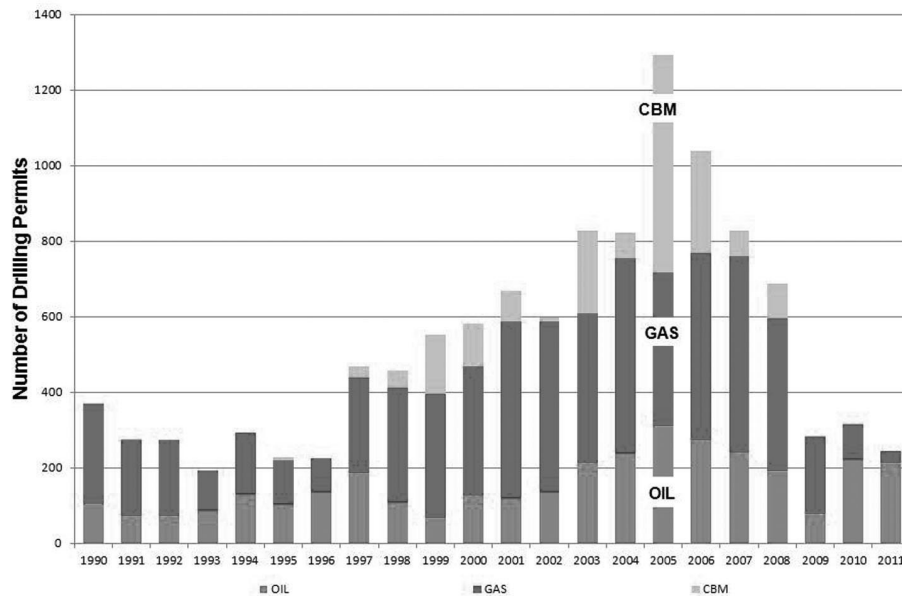
### Middle Bakken / Three Forks Pay Variation

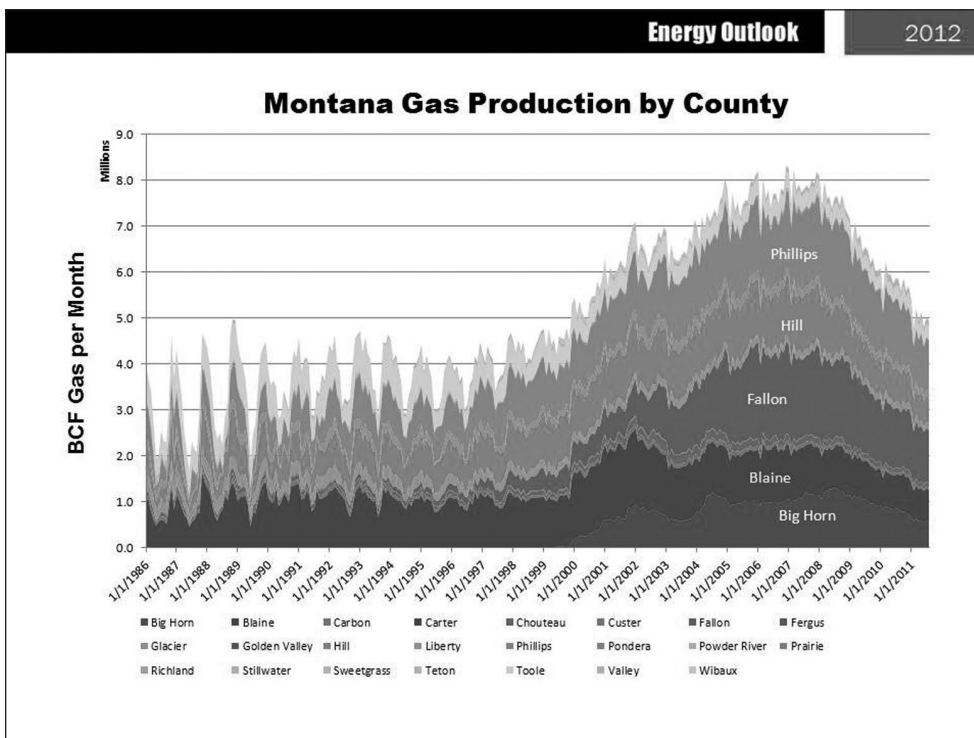
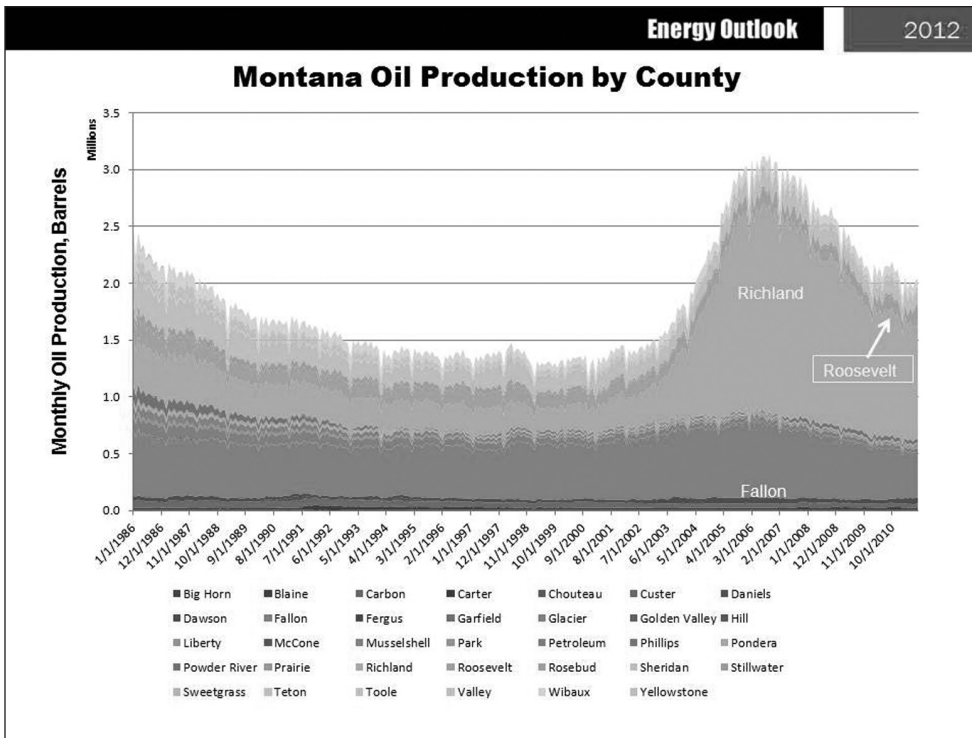


- Middle Bakken pay not a shale lithology
  - Complex, laterally varying lithology & play types
  - Stratigraphic / diagenetic trap drivers
- Underlying Three Forks 'non-shale' play potential established 2008
  - Also sourced by Bakken shale
  - Dual zone development underway

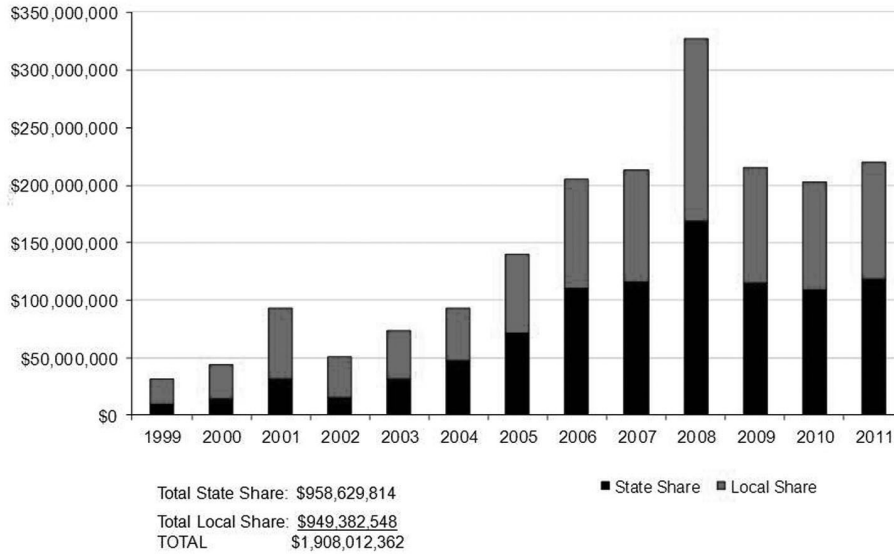
from ConocoPhillips

### Montana Drilling Permits Issued, 1990 through 2011

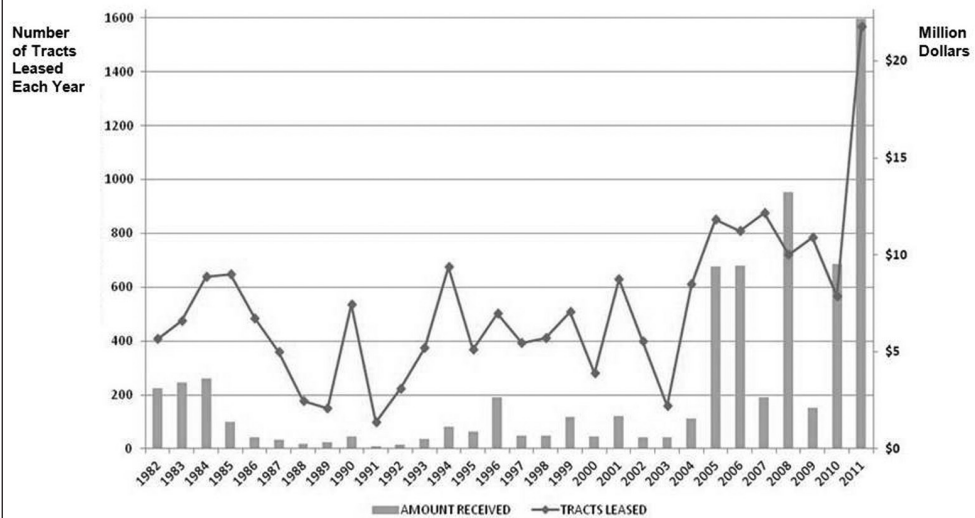




### Oil and Natural Gas Production Tax Revenue Collections



### Oil and Gas State Land Lease Sales



## Petroleum Industry Facts

\$9+ BILLION Total economic impact – including E&P and Refining

4,600 Employees in Exploration, Production, or Refining

Economic impact from producing an additional 1 million barrels of oil

- 86 Full time positions
- \$18.5 million in labor income

Each 10% increase in drilling activity leads to about 315 additional jobs.

Drilling Rig Count Increased from 9 last year to 13 in January 2012

Industry likes MT's business climate and tax structure

- **Brigham Energy:** "They (Montana) have a good operating environment."  
(Billings Gazette, May, 2011)

## BUSINESS TAX CLIMATE RANKINGS *THE TAX FOUNDATION FISCAL YEAR 2011*



## Montana Oil and Gas Taxes

Montana's tax rate on oil is 20% lower than North Dakota's

→ 9.25% vs. 11.5% (Former North Dakota Governor Ed Schafer, FixTheTax.com)

Taxes	Montana	North Dakota	Advantage
Tax Rate	9.25%	11.5%	Montana
Tax Holiday	18 mo. (0.5%)	Only if oil <\$50.07	Montana
Avg. Tax/Bbl (05-08)	\$4.89	\$5.87	Montana

(Montana Department of Revenue Study)

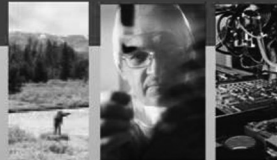
## O&G Impact Funds to Counties, 2007-2001

All O&G Producing Counties (33)	\$555 million
Top 12 Counties Big Horn, Blaine, Fallon, Glacier, Hill, Phillips, Powder River, Richland, Roosevelt, Sheridan, Toole, Wibaux	\$515 million
Richland County	\$244 million Over \$26,000/resident

# Montana's Hesitant Economic Recovery

**Patrick M. Barkey**  
Director, Bureau of Business  
and Economic Research  
The University of Montana

**OUTLOOK 2012**  
National & State

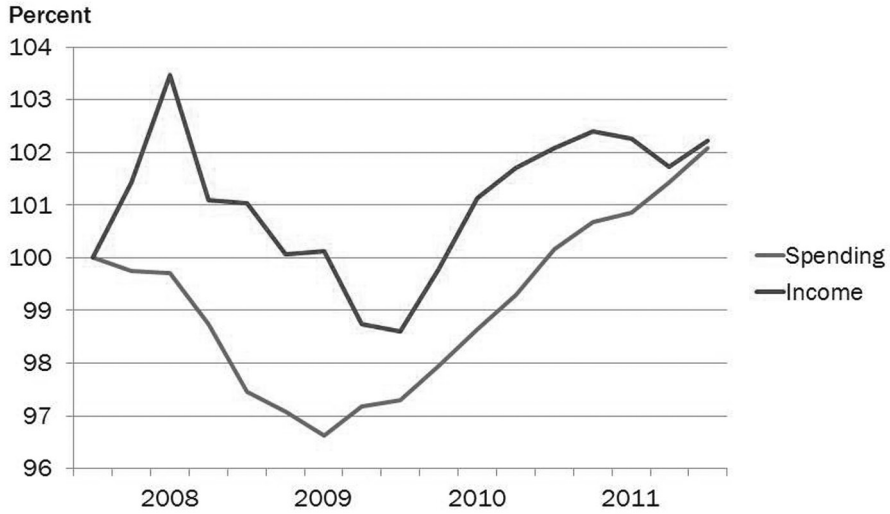


## A Great Recession, But Not a Great Recovery

- Persistently weak consumer and business spending
- Slow recovery both here and abroad
- Special problems of housing and the Euro
- Problems of long-term unemployed, government debt, are festering as a result

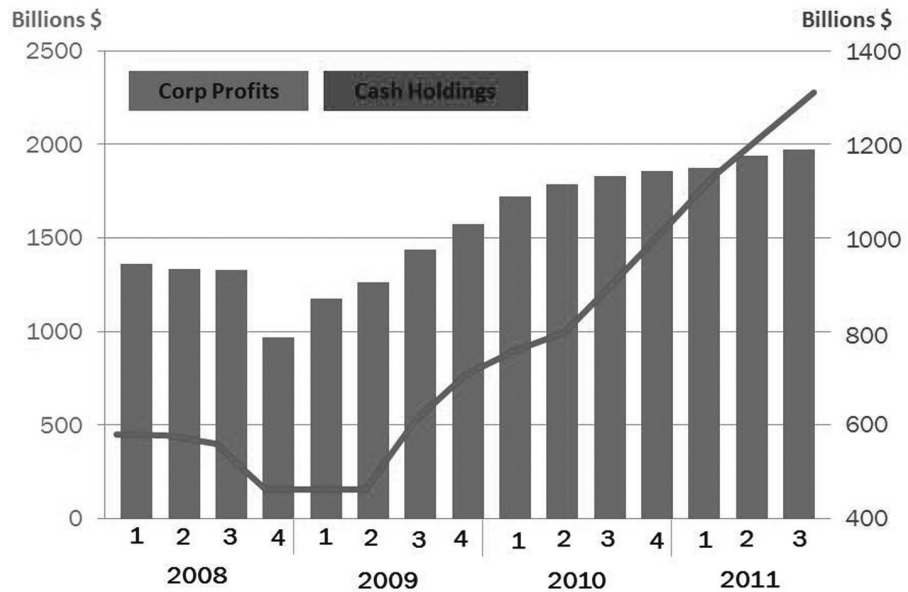
Notes

**Pace of Consumer Spending  
Likely to Slow**

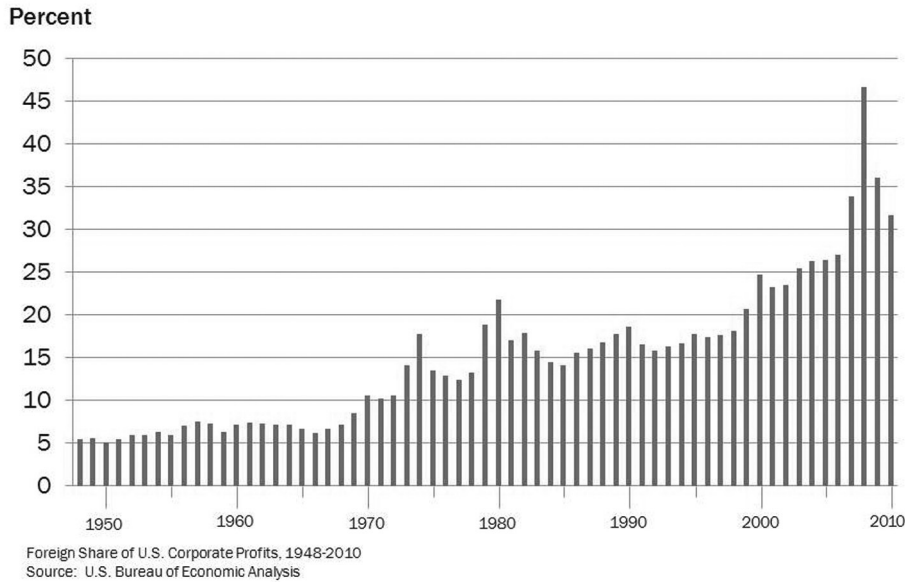


U.S. Pers. Consumption Expenditures and Disposable Pers. Income, 2005 \$, Index 2007Q4 = 100

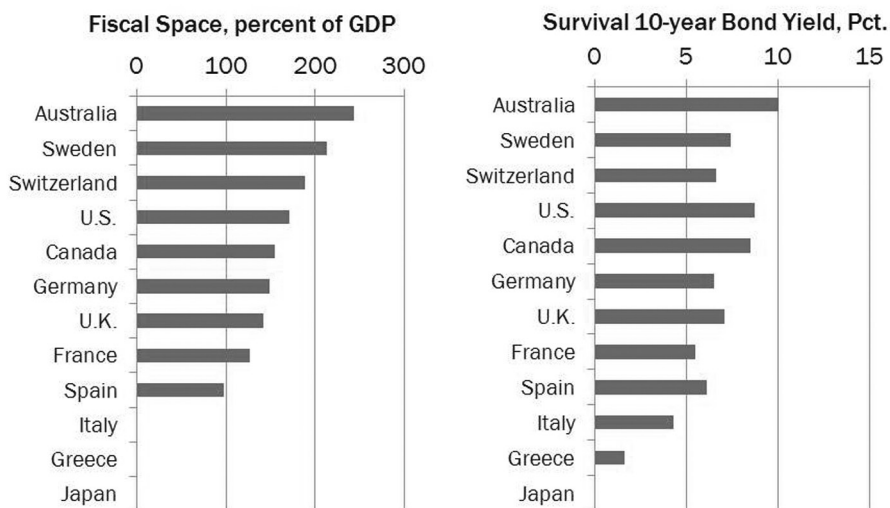
**Companies Are Hoarding,  
Not Spending**



**Source of Corporate Profits?  
Look Abroad**



**How Much Borrowing Capacity  
Do Countries Have Left?**

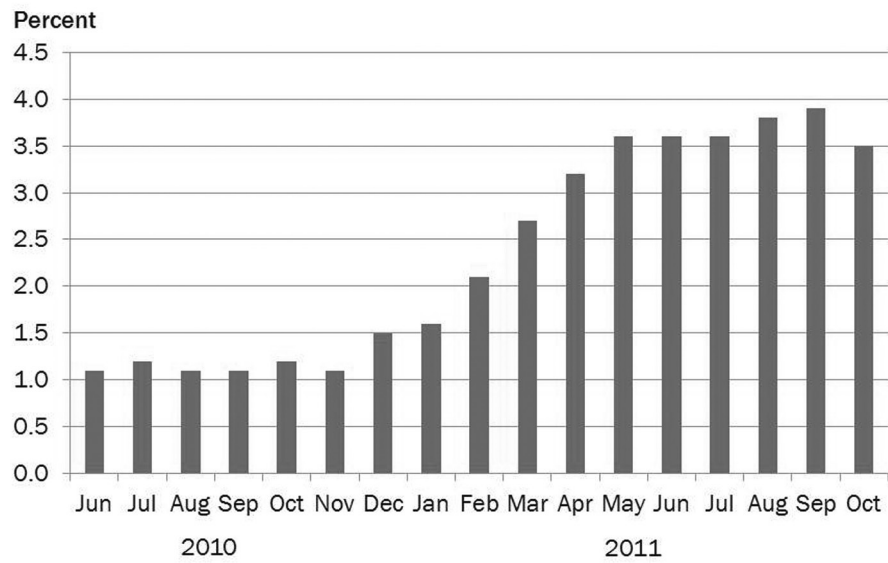


Notes

**2011 Growth in Montana  
will be Lower Than 2010**

- Reason #1: Inflation

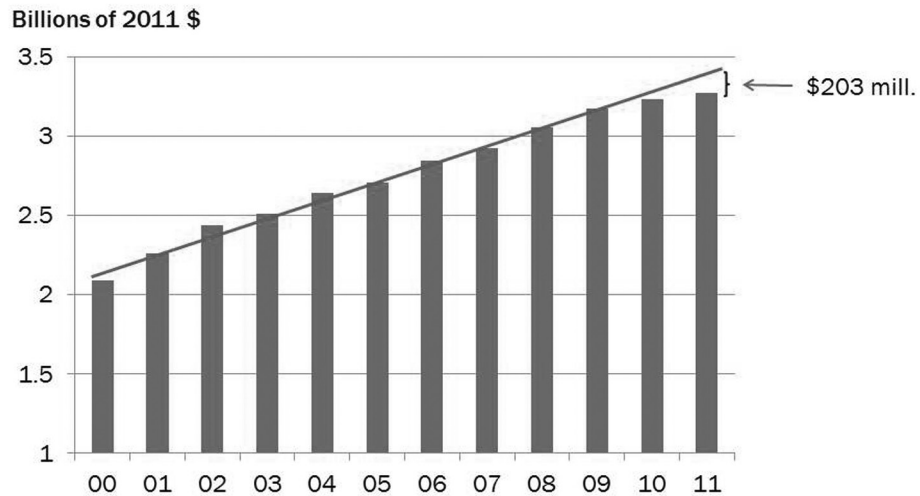
**Consumer Price Index  
12-month percent change**



### 2011 Growth in Montana will be Lower Than 2010

- Reason #1: Inflation
- Reason #2: Underperformance of key sectors

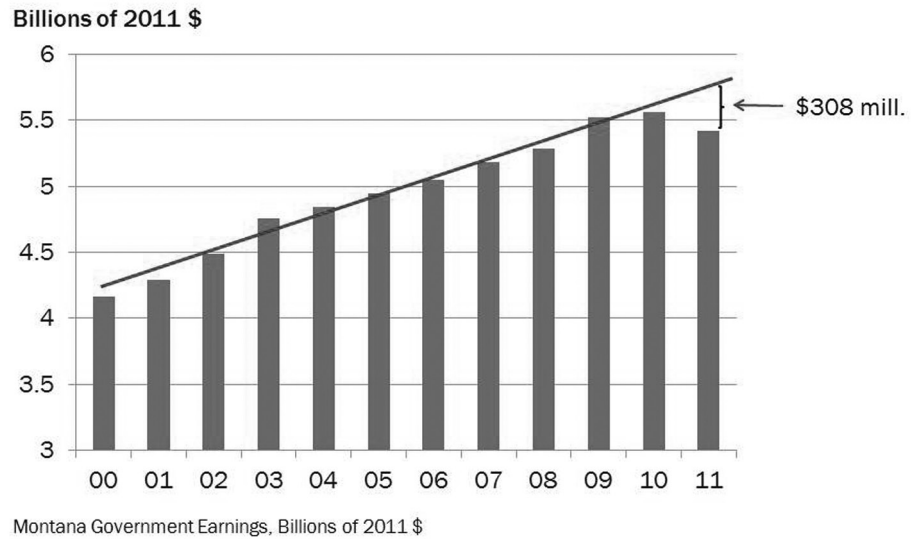
### Health Care Earnings Growth Slows



Montana Health Care Services Earnings

Notes

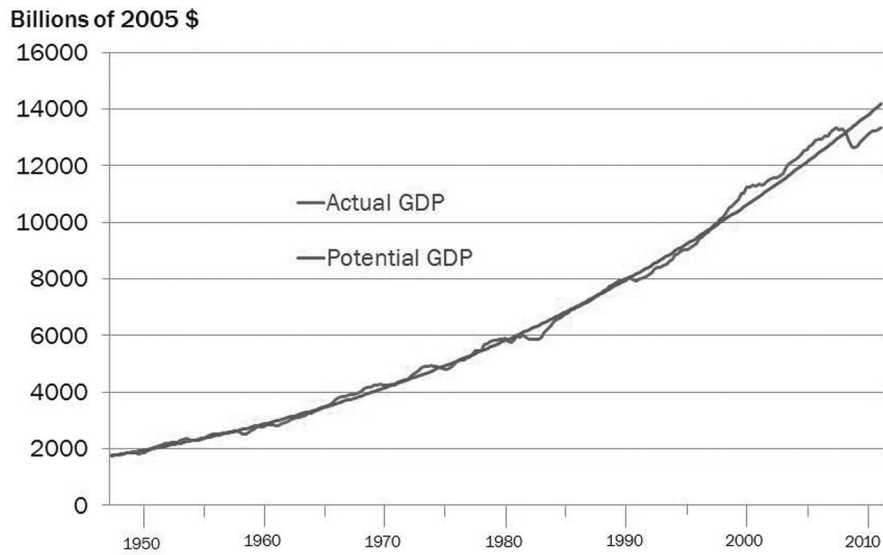
**Government Earnings  
Go in Reverse**



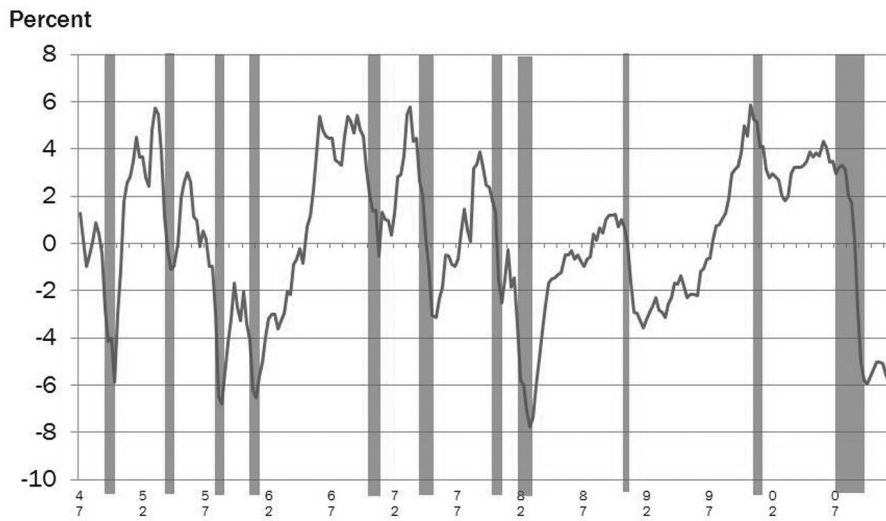
**2011 Growth in Montana  
will be Lower Than 2010**

- Reason #1: Inflation
- Reason #2: Underperformance of key sectors
- Reason #3: The national economy

**Actual and Potential Economic Output**



**How the U.S. Economy Recovers from Recessions**



Deviation of U.S. Gross Domestic Product from Long Term Trend

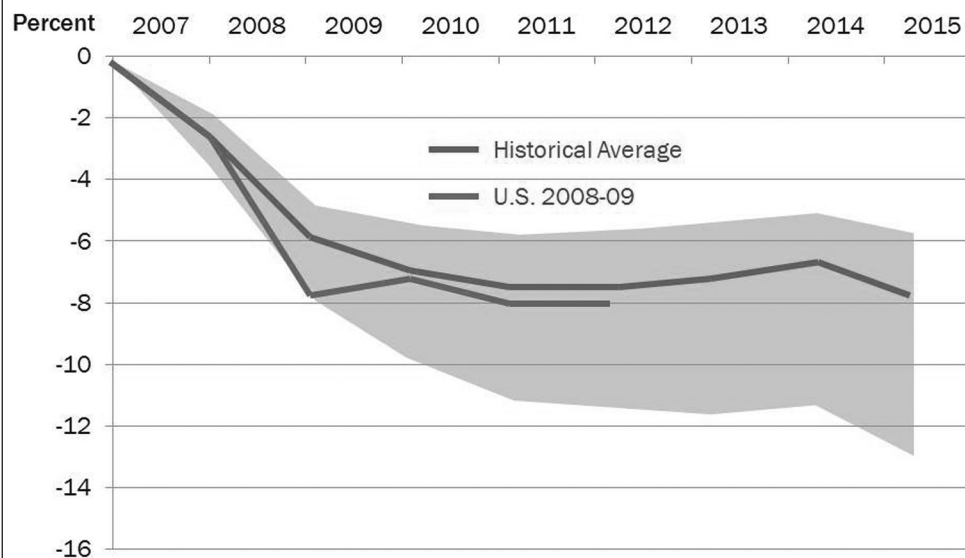
Notes

**Recessions and Banking Crises**

- Austria, 2008
- Hungary, 2008
- U.S., 1929
- Sweden, 1991
- Japan, 1992
- Norway, 1987
- Indonesia 1997
- Hong Kong, 1997
- Argentina, 2001
- Korea, 1997
- Malaysia, 1997
- Spain, 1977
- Thailand, 1997



**Recovery of GDP From Financial Crises**



## U.S. Outlook Summary

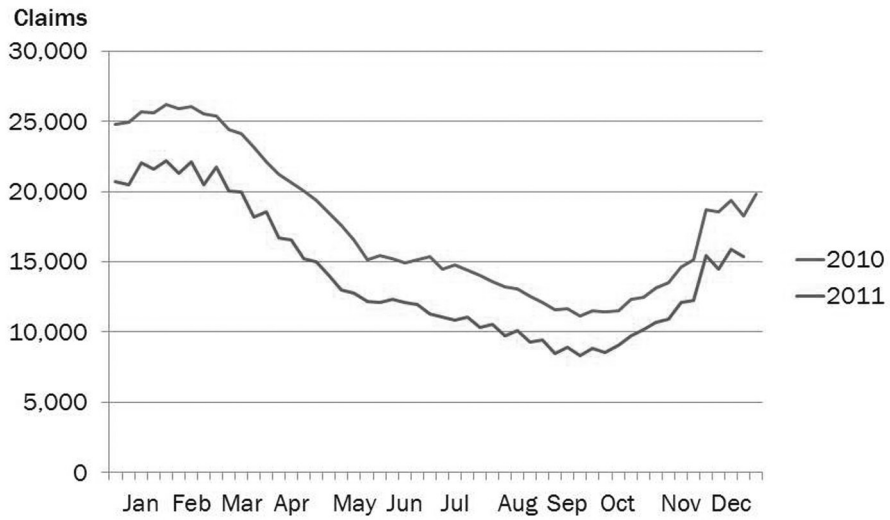
- U.S. will probably avoid another recession
- Euro Zone is already in recession. Will it be mild or severe?
- Continued government cutbacks, at all levels
- Evidence of pent-up demand in a few areas
- A cooling off for commodity and food prices
- Very high unemployment rates persist

### The Montana Economy What's Right and What's Wrong

- Energy and natural resources are booming
- Healthy increases in farm gross receipts
- Labor market is healing
- Consumer confidence is higher
- Housing bust hangover still lingers
- Retail remains weak
- Government cutbacks being felt
- Wood products cutbacks still reverberate

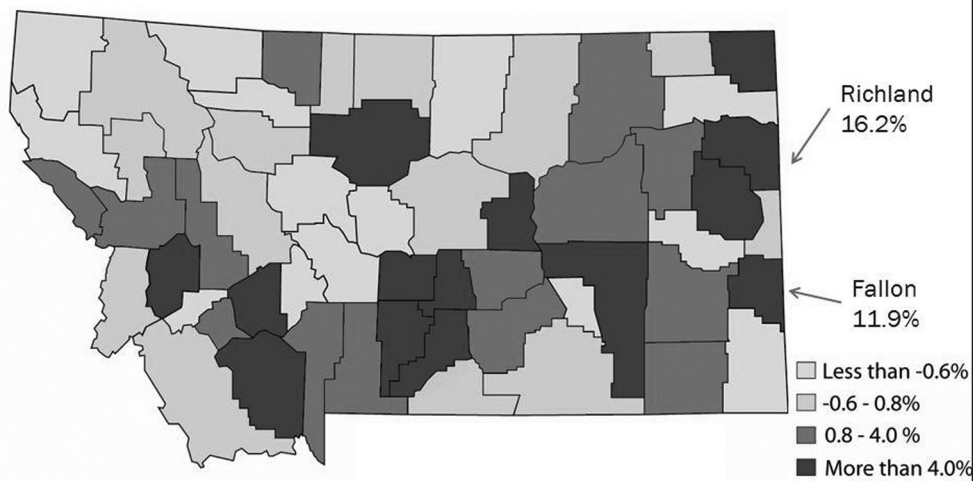
Notes

**Lower Unemployment Claims  
Sign of Labor Market Improvement**



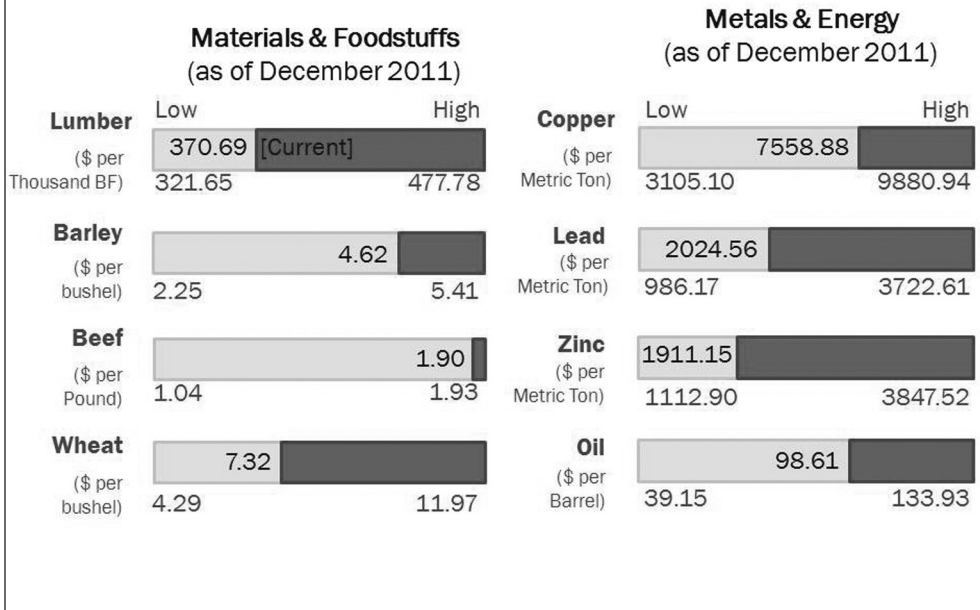
Continuing Claims for Unemployment Insurance, Montana  
Source: U.S. Department of Labor

**Fastest Growth  
is in the East**

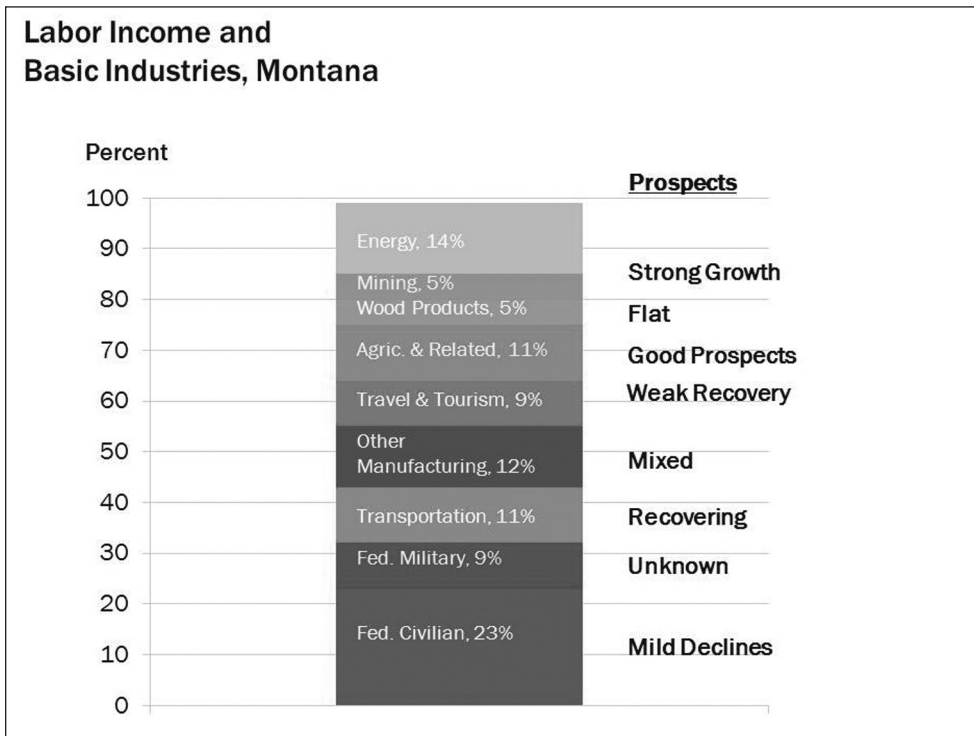


Percentage Growth in Real Wage and Salary Disbursements, 2010Q2 - 2011Q2

**Commodity Prices:  
Favorable to Montana?**

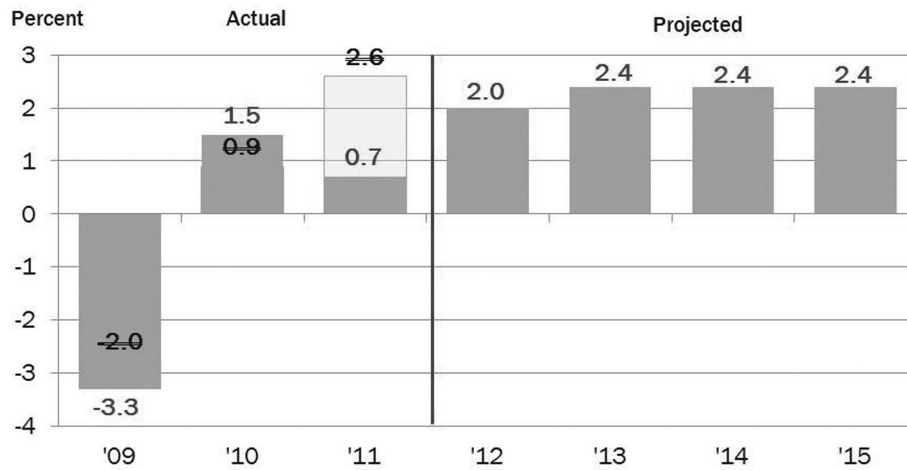


**Labor Income and  
Basic Industries, Montana**

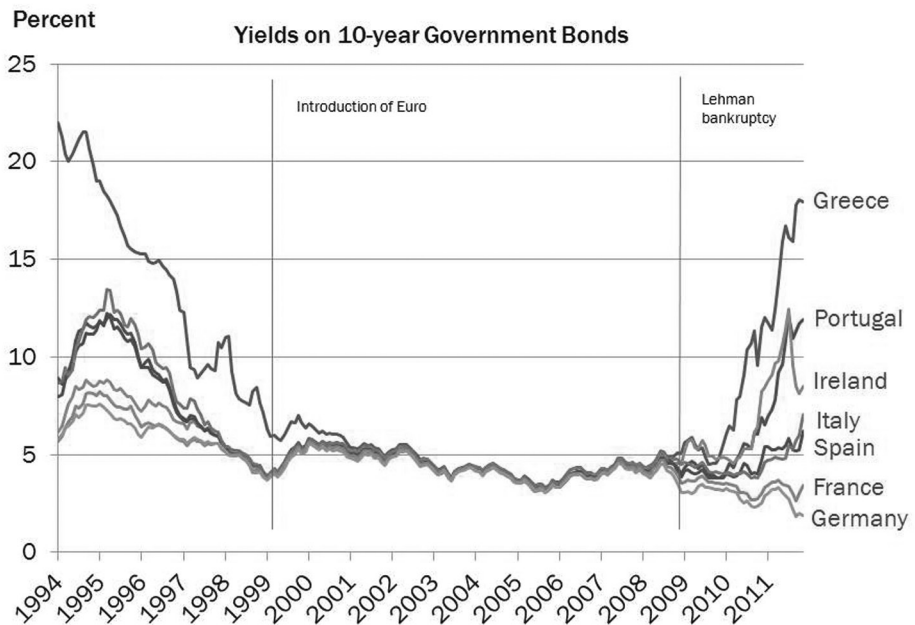


Notes

**Change in Nonfarm Earnings, Montana, 2009-2015**



**The EU Currency Experiment is Unraveling**



**Top 10 Countries  
Buying Montana Products**

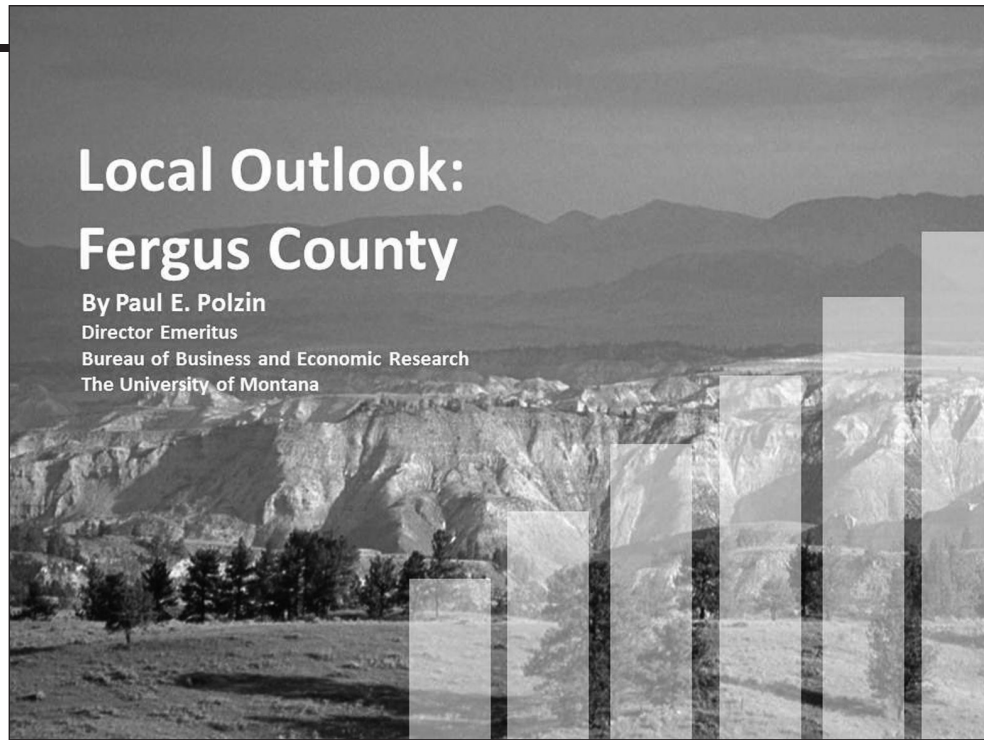
Notes

In millions of dollars:

1	Canada	\$539.7
2	Republic of Korea	186.8
3	China (Mainland)	122.9
4	Japan	109.8
5	China (Taiwan)	93.5
6	Mexico	79.9
7	United Kingdom	37.3
8	Germany	25.6
9	Belgium	24.8
10	Netherlands	18.5

\*These figures do not include bulk wheat exports

Notes



# Local Outlook: Fergus County

By Paul E. Polzin  
 Director Emeritus  
 Bureau of Business and Economic Research  
 The University of Montana

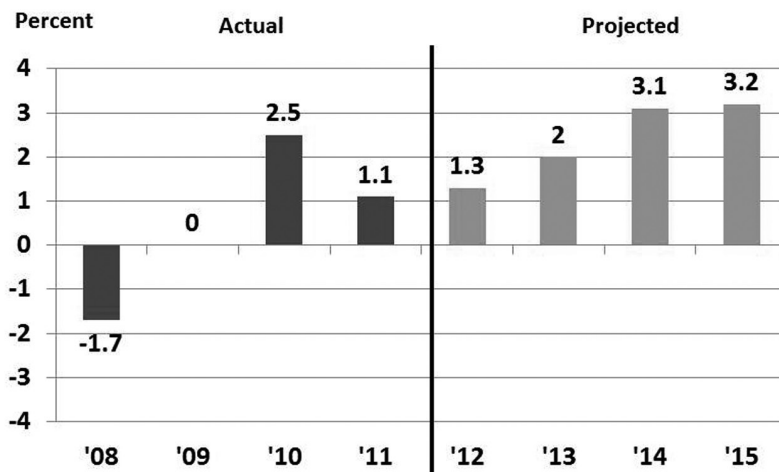
## Recession Scorecard

	Duration (Years)	Severity (% Change)
Lewis & Clark County	<b>What Recession?</b>	
Cascade County	<b>What Recession?</b>	
Hill County	1	-0.4%
Yellowstone County	1	-1.5%
Fergus County	1	-2.0
Missoula County	3-4	-4.9%
Gallatin County	2	-7.9%
Flathead County	4	-10.2%

### Fergus County's Economic Base 2009-2011

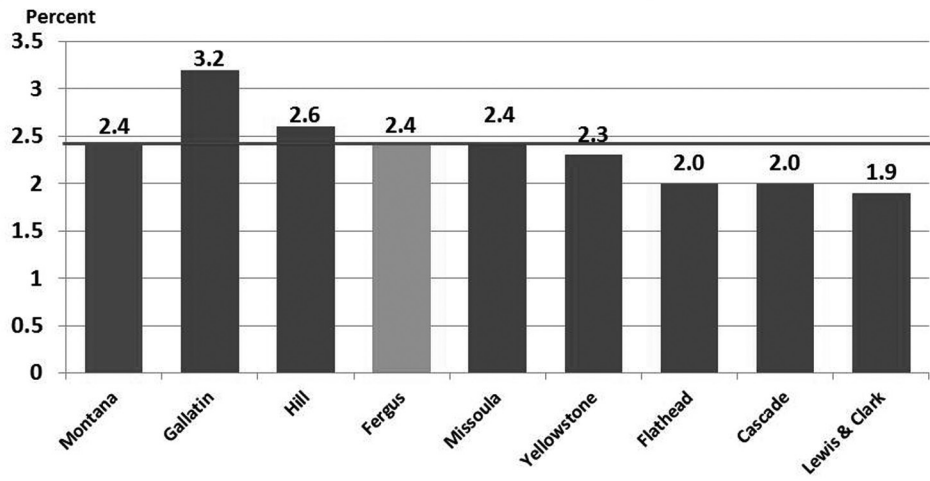
• Rehabilitation, Travel	8%	Modest Growth
• State Government	12%	Pay Freeze
• Federal Government	20%	Stable, at best
• Manufacturing	22%	Stable
• Ag and Related	38%	Continued Strong

### Actual and Projected Change in Nonfarm Earnings, Fergus County, 2008-2015



Notes

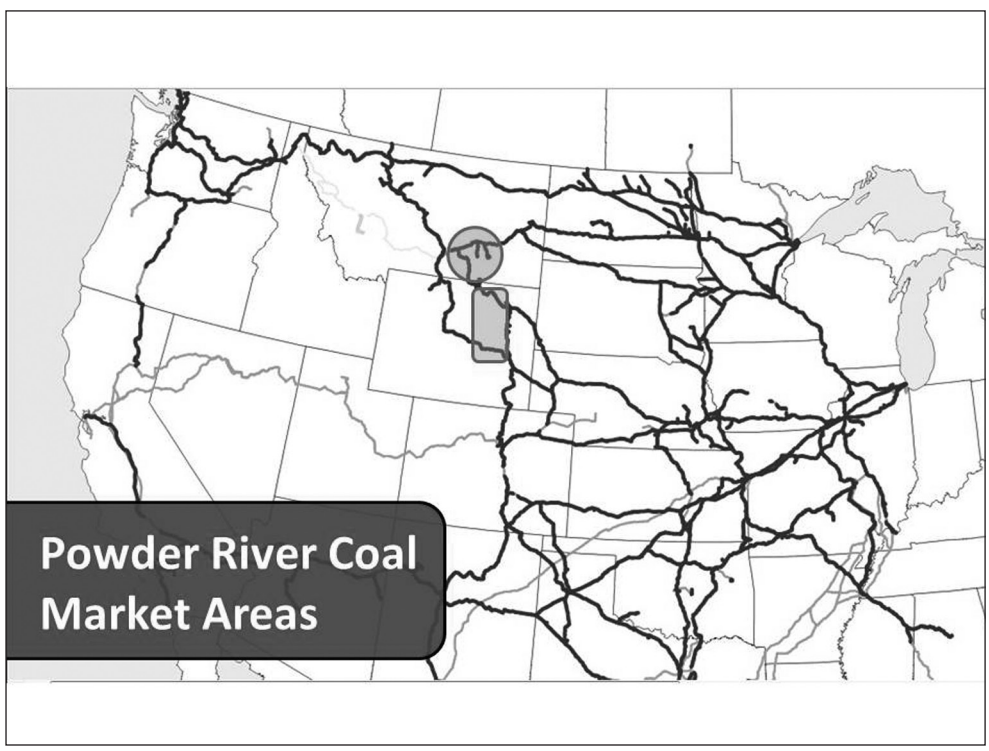
**Projected Annual Percent Change  
in Nonfarm Labor Income  
(in Constant Dollars) 2011-2015**



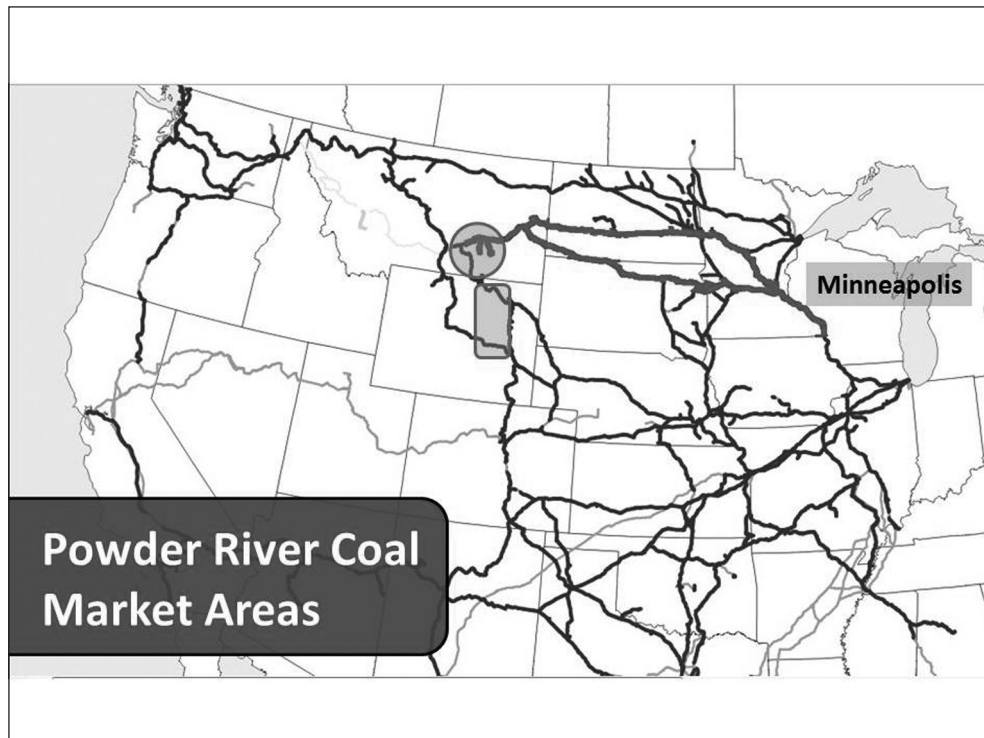
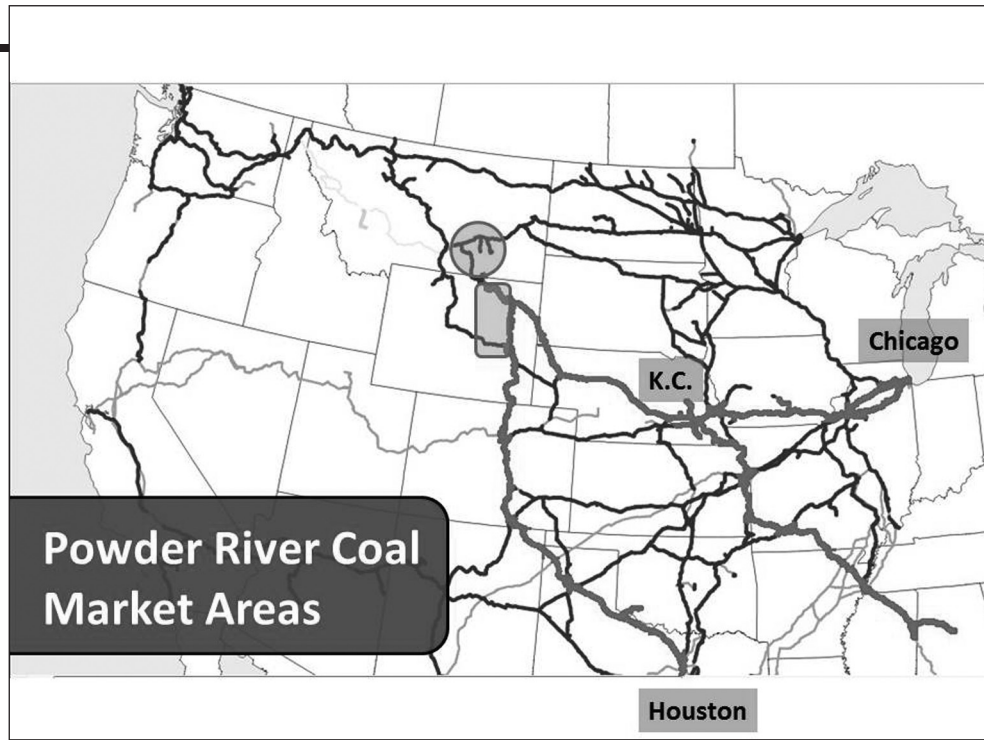
Notes

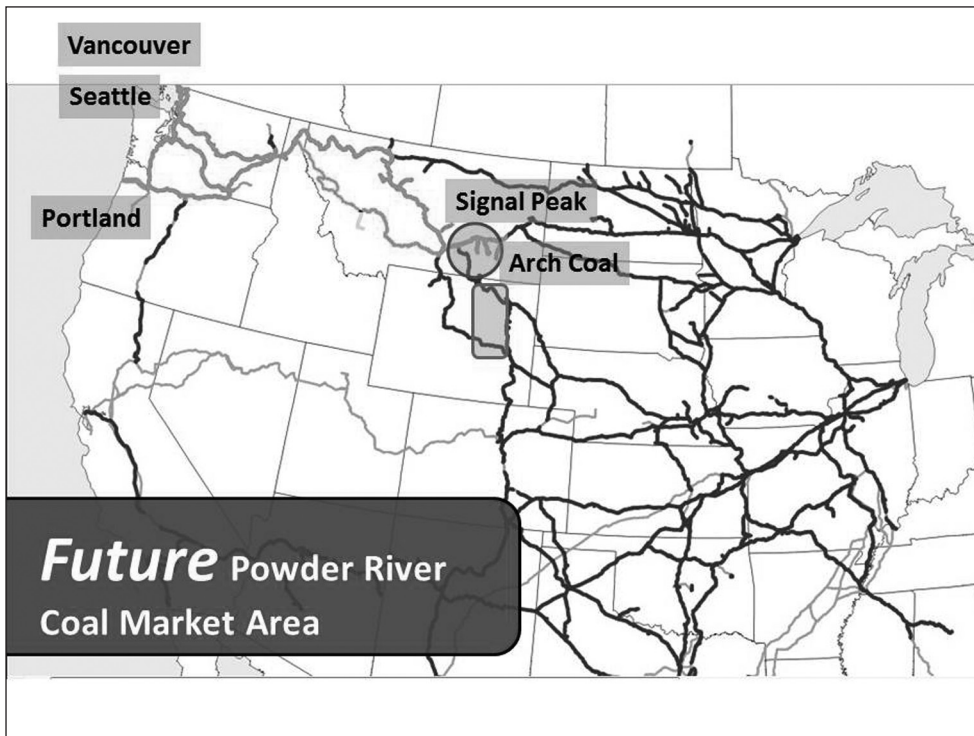
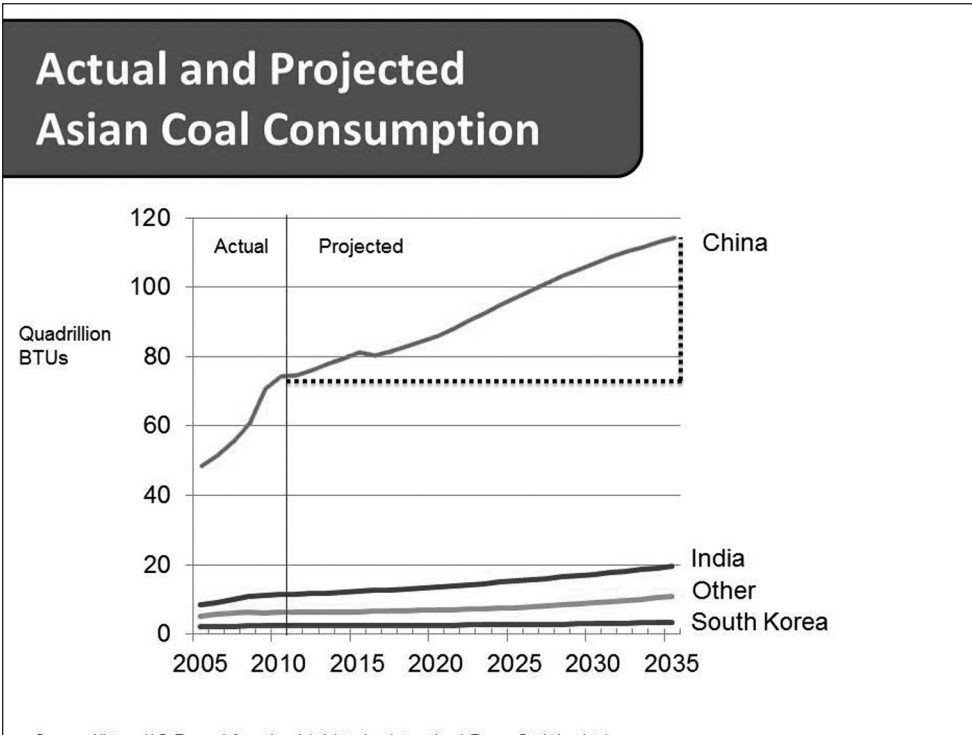
### Coal Reserves and Production

	Reserves (Billions of Tons)	
<b>Montana</b>	<b>119.0</b>	
<b>Wyoming</b>	<b>61.0</b>	



Notes



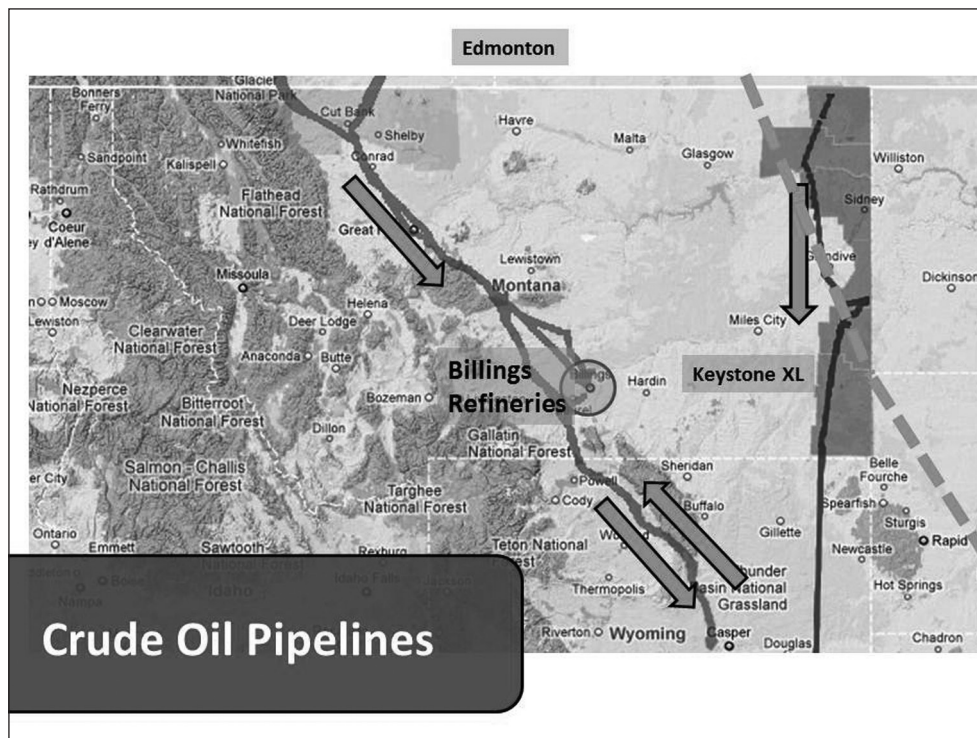


Notes

## Montana Crude Oil, 2010

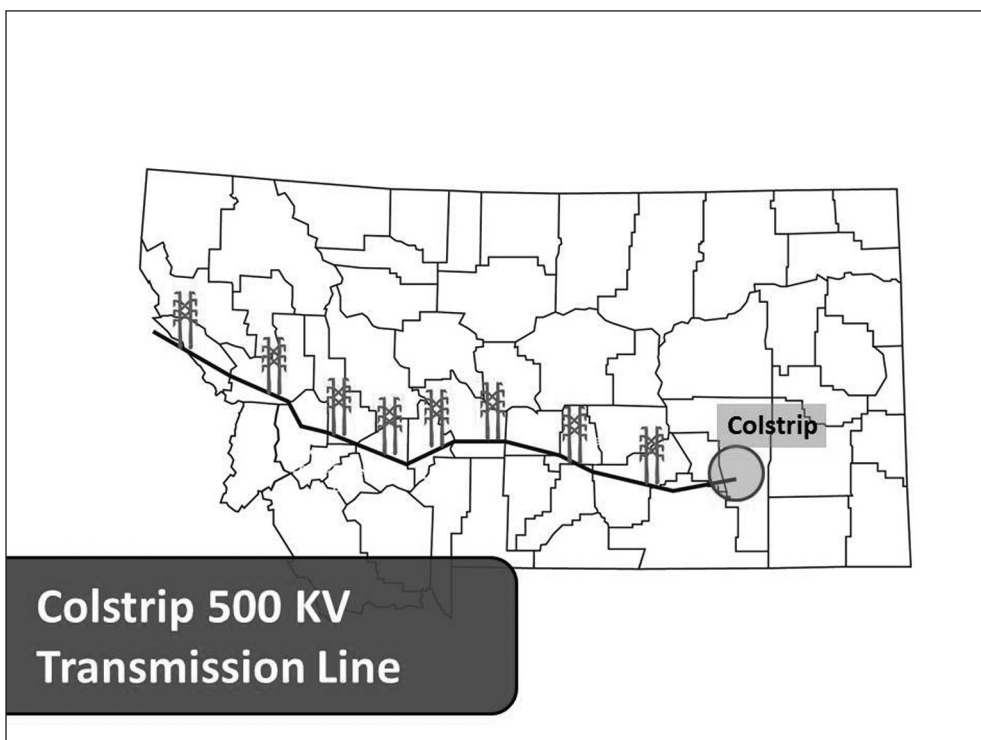
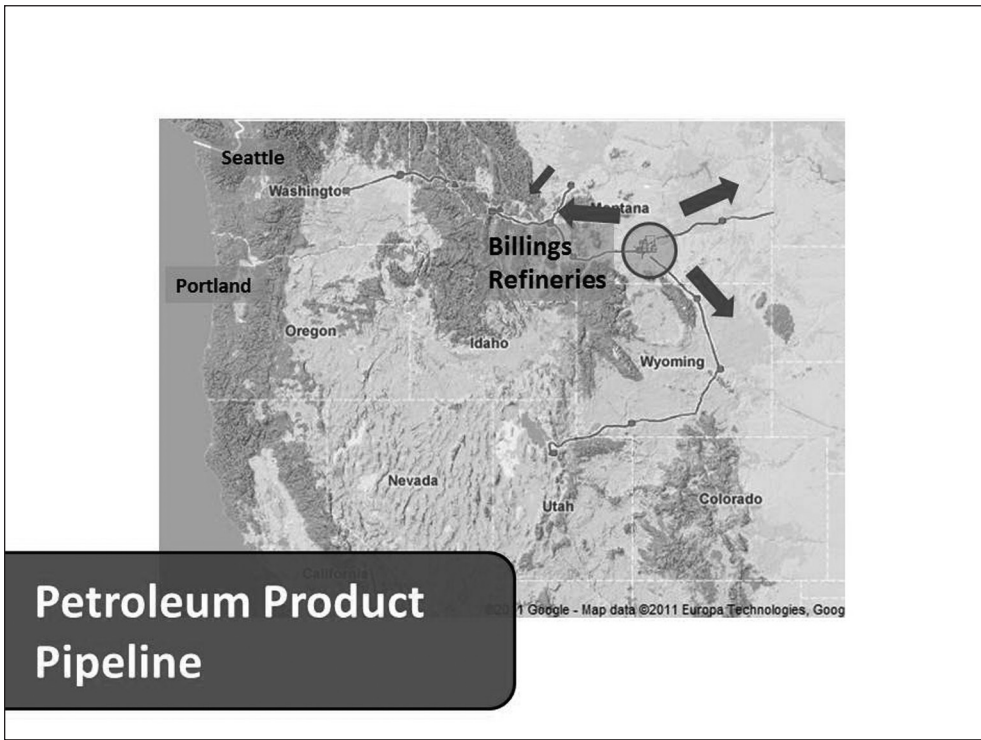
	Barrels
<b>Production</b>	<b>25,317,532</b>
<b>Refined in MT</b>	<b>1,574,362</b>
<b>Percent</b>	<b>6.21</b>

Source: Montana Oil and Gas Conservation Division.



## Crude Oil Pipelines

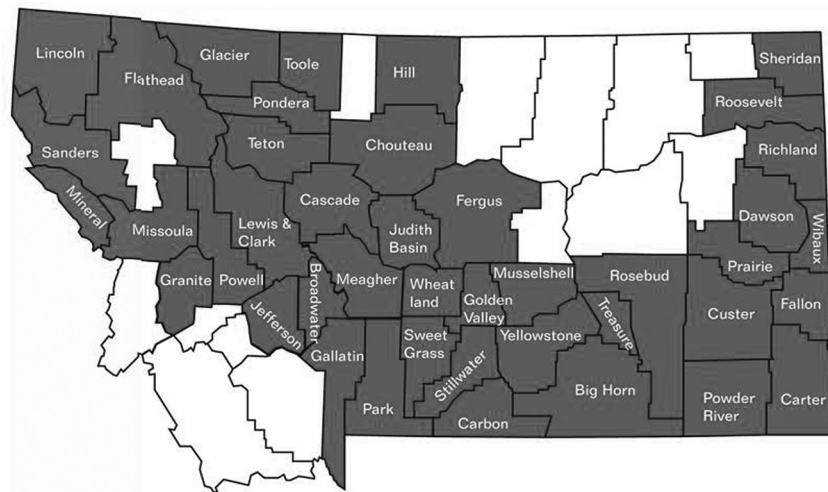
Notes



Notes

**Transmission Line  
Property Taxes  
to Counties**

County	Estimated Taxes
Rosebud	\$492,000
Treasure	\$952,000
Big Horn	\$241,000
Yellowstone	\$1,467,000
Golden Valley	\$372,000
Stillwater	\$373,000
Wheatland	\$615,000
Meagher	\$865,000
Broadwater	\$563,000
Jefferson	\$401,000
Powell	\$322,000
Granite	\$401,000
Missoula	\$568,000
Mineral	\$784,000
<b>TOTAL</b>	<b>\$8,417,000</b>



**Montana's Energy  
Transportation Systems**

# Soaring, Gliding, or 'Bumpy Ride'? Changes in Tourism

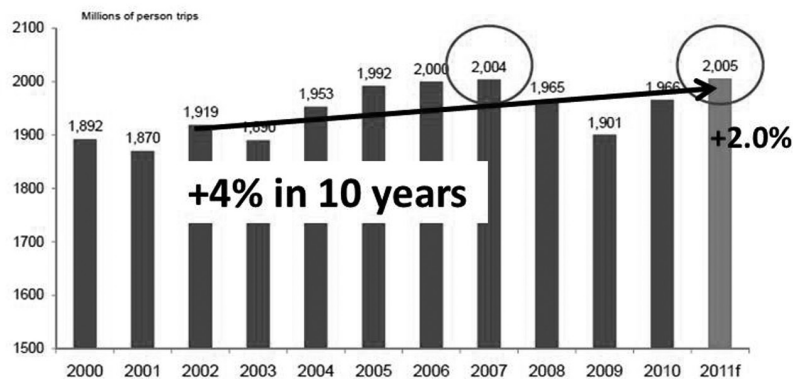
Norma Nickerson, Director  
Institute for Tourism and Recreation Research  
University of Montana



2012 Annual Outlook Seminar



## Total Domestic Visitors in the United States *Expected to exceed record slightly in 2011*

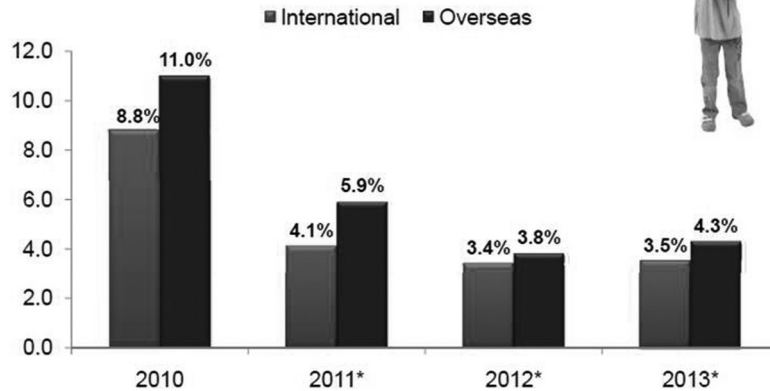


Forecast as of October 2011  
Source: U.S. Travel Association and Tourism Economics



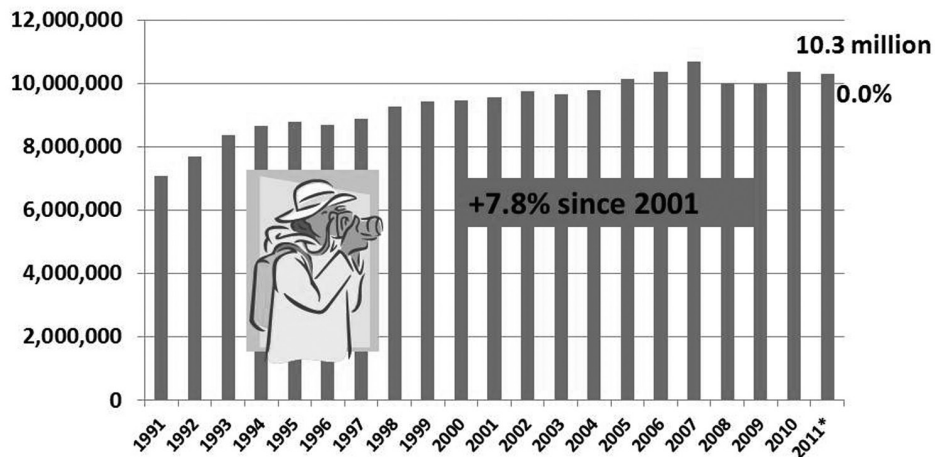
Notes

## International and Overseas arrivals - slowing growth expected



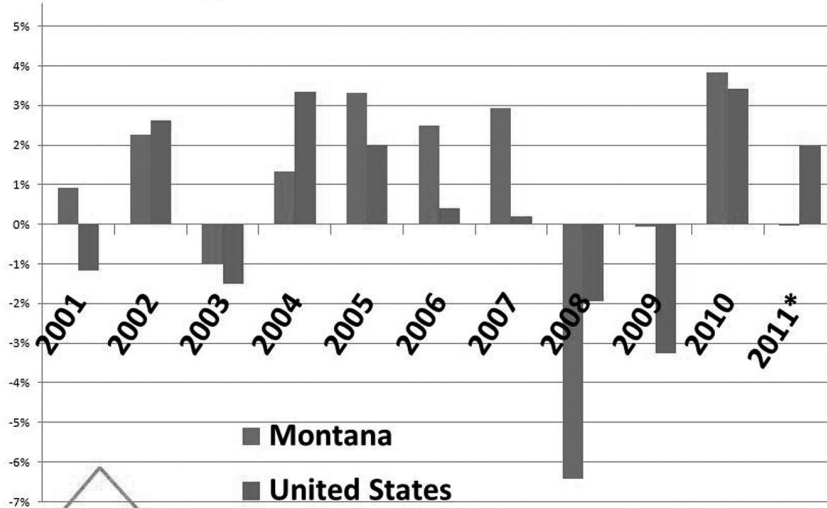
\*Forecasts as of October 2011  
Source: U.S. Travel Association; Tourism Economics

## MT Nonresident Visitation: 1991-2011



\* projected

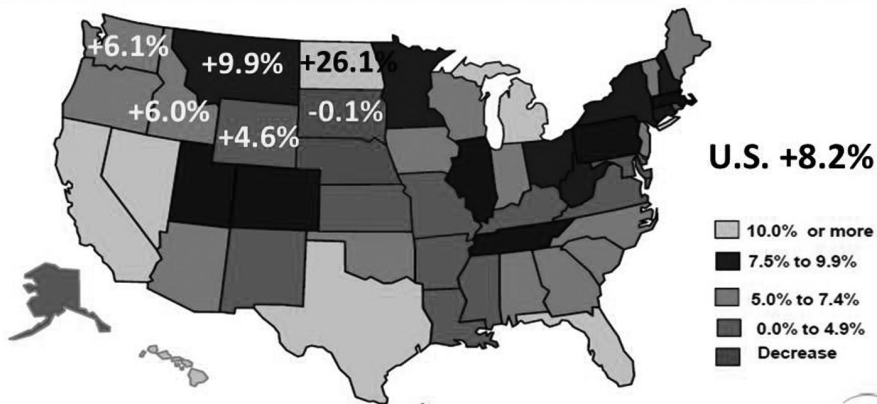
### Percent Change in Montana and US Visitation



Institute for Tourism and Recreation Research

The University of Montana

### % change in RevPAR through November 2011 - Getting better

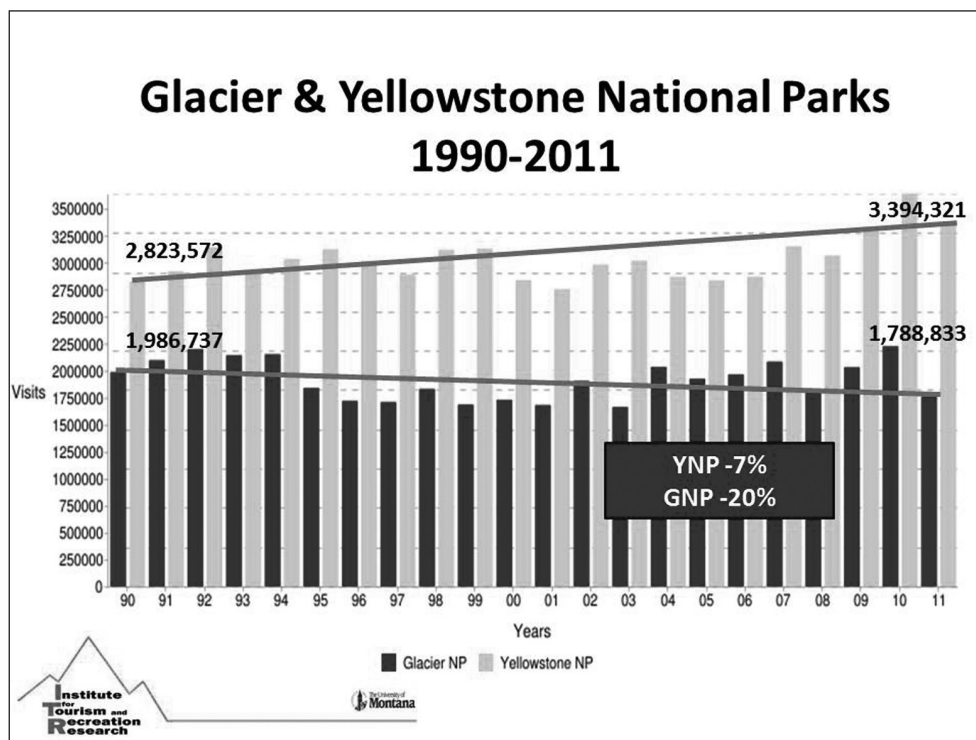
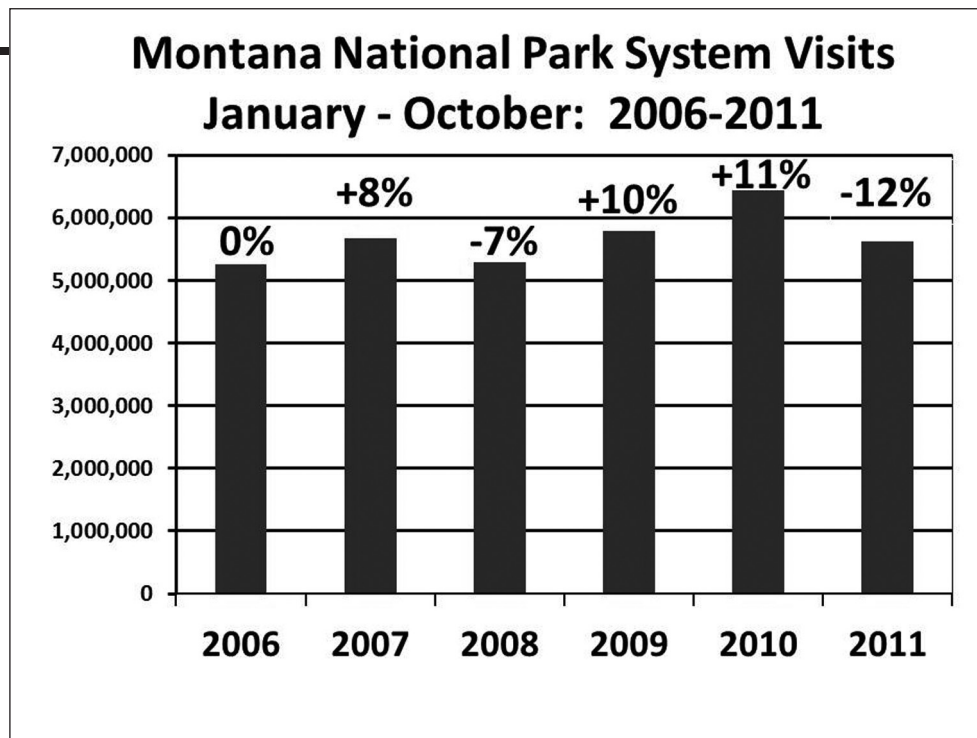


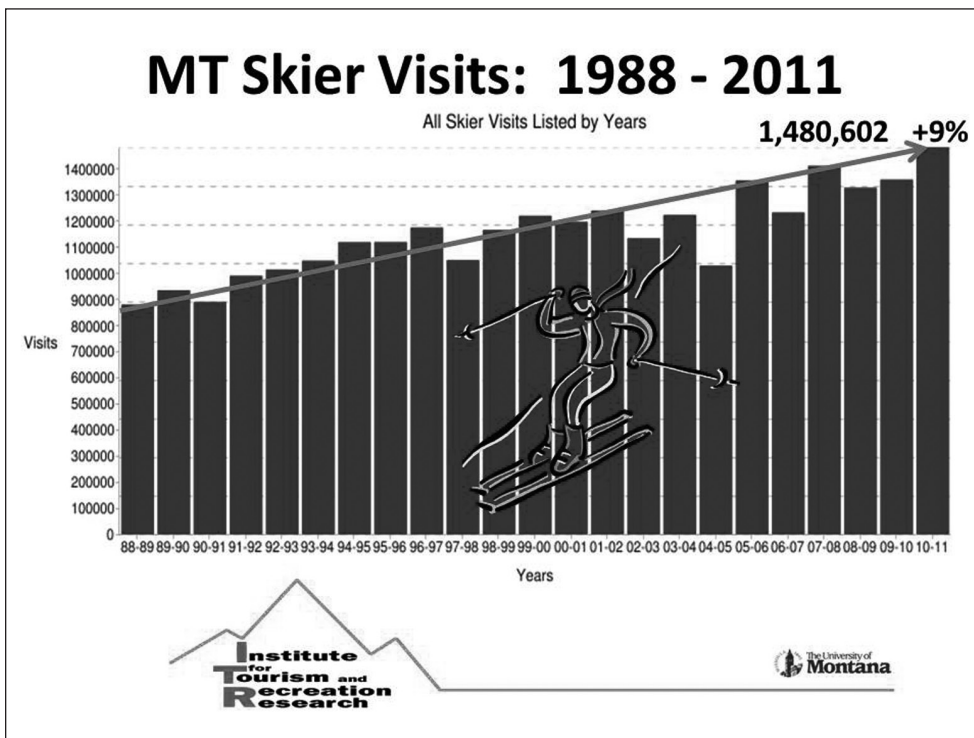
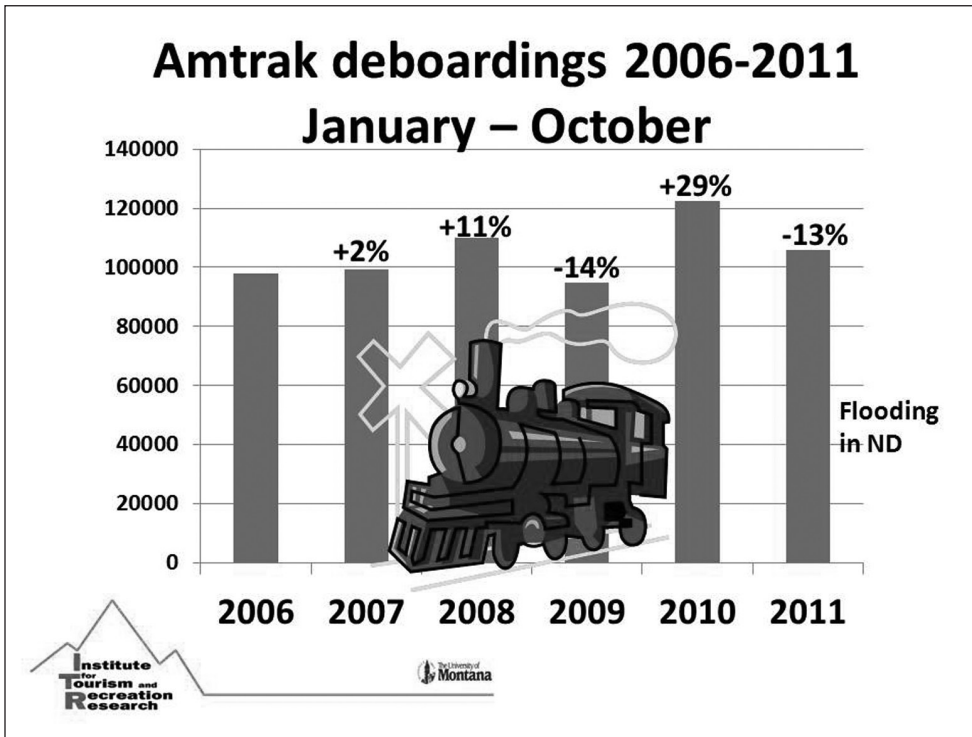
Source: Smith Travel Research, Oct. 2011

Institute for Tourism and Recreation Research

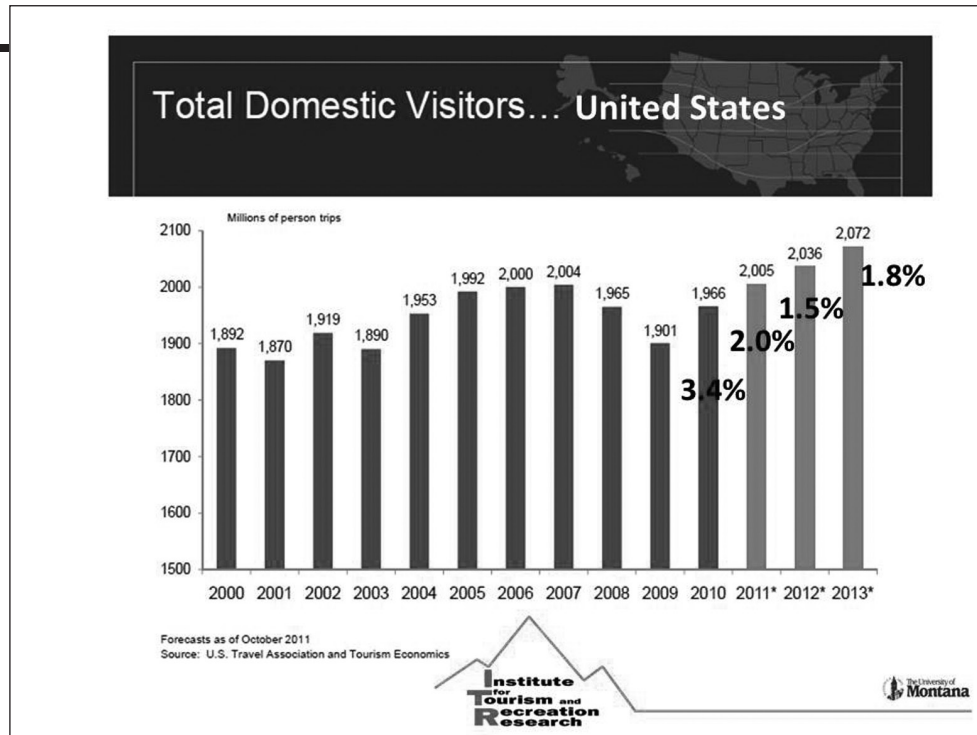
STR. The University of Montana

Notes





Notes



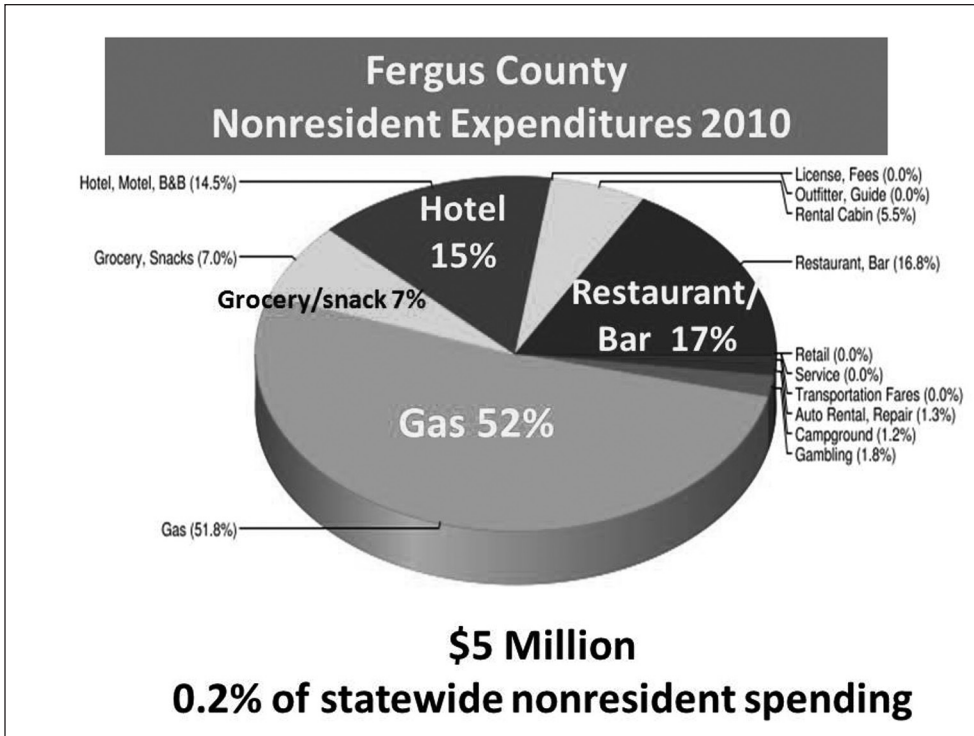
## 2012 MT Tourism Businesses

- 48% expect growth in 2012
- 40% expect to stay the same
- Overall: 2% growth expected in 2012

## 2012 National Tourism

- 1.5% growth in domestic visitors
- 3.4% growth in International visitors
- 3.8% growth in overseas visitors





Notes



Health care spending is driven by . . .



MT \$35,068  
 US \$39,945

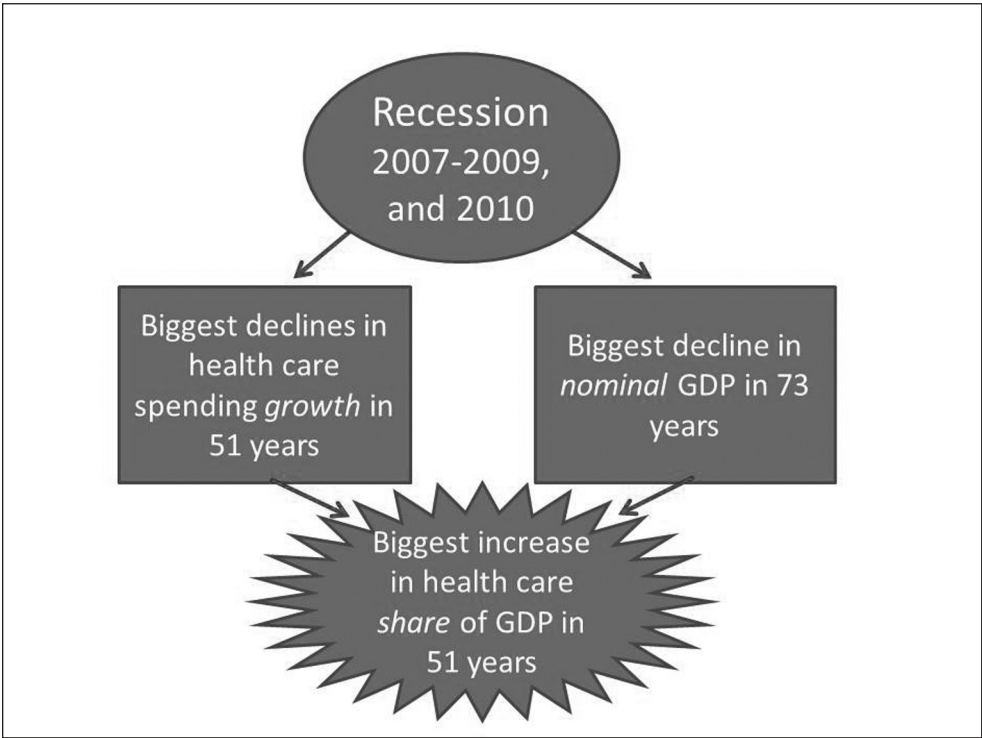


MT 15%  
 Fergus 12%  
 US 17%



MT 15%  
 Fergus 22%  
 US 13%





### Health care is big in Montana...

\$7.2 billion in personal health care spending

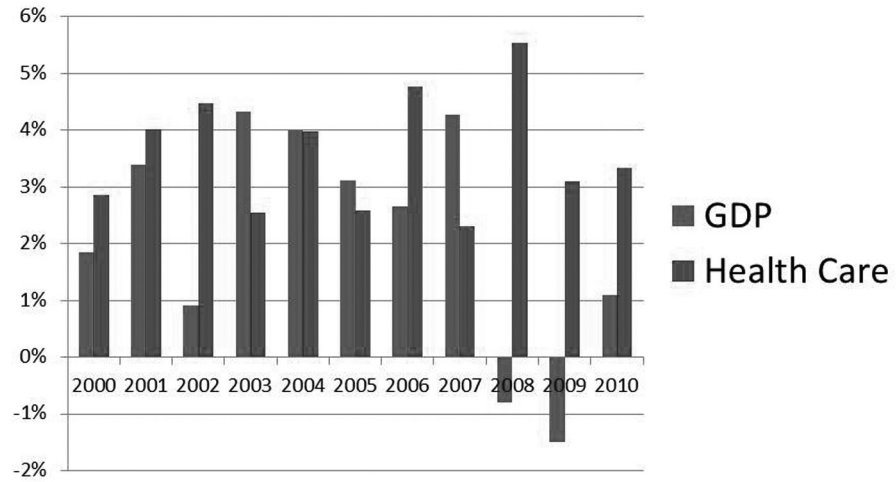
Health care share of economy

Growth Rate

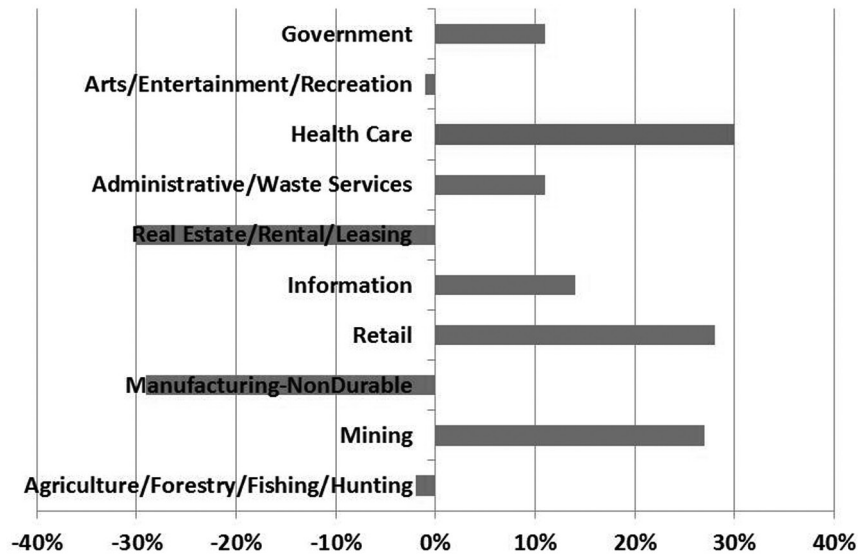
The complex block features three vertical panels. Each panel has a circular icon at the top and text below. The first panel has a dollar sign icon and the text '\$7.2 billion in personal health care spending'. The second panel has a medical syringe icon and the text 'Health care share of economy'. The third panel has a car icon and the text 'Growth Rate'. Below these three panels is a large, light-colored double-headed arrow pointing left and right.

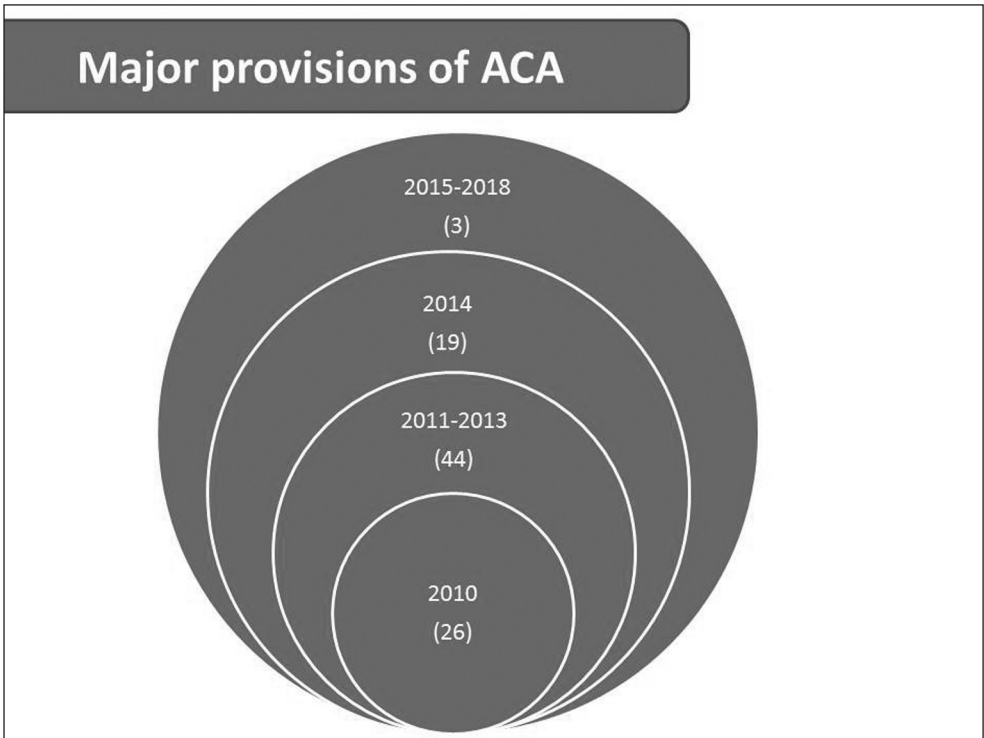
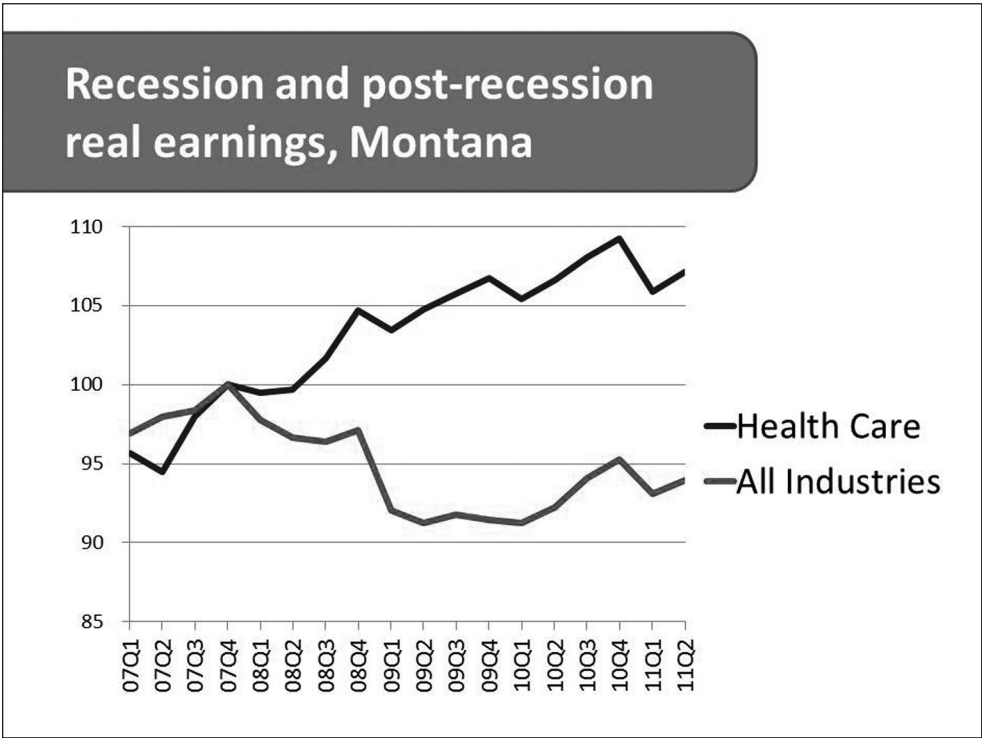
Notes

### Real growth rates Montana GDP and health care



### Health care *the big* contributor to 1.1% increase in Montana real GDP, 2009-2010





Notes

## ACA provisions



10%  
Tanning bed  
tax  
7/1/2010

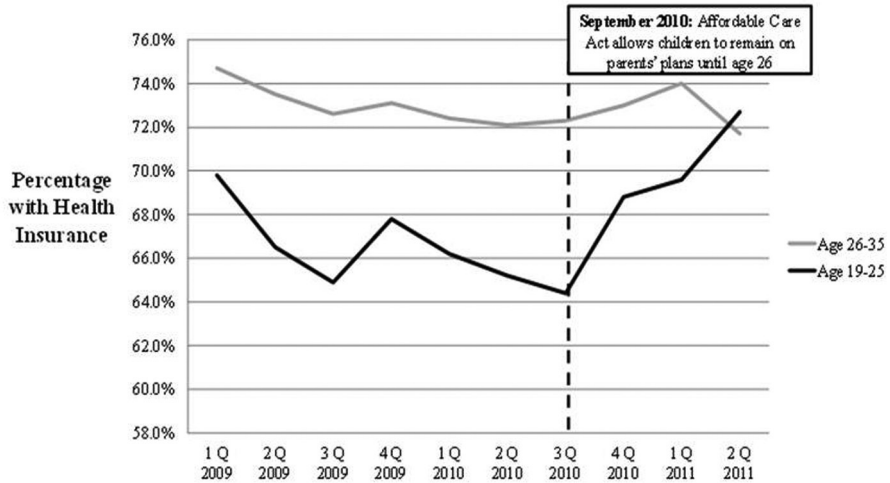


Adults  
under 26  
9/23/10

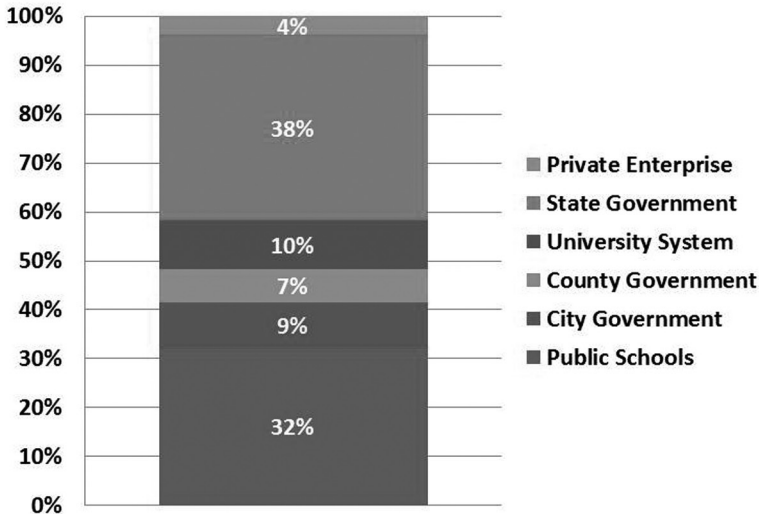


Early  
Retiree  
Reinsurance  
Program  
6/29/2010

## Health insurance coverage for young adults



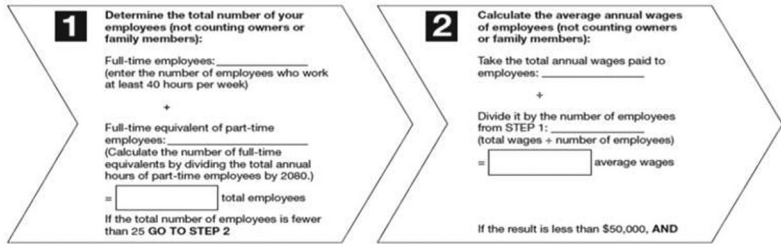
### Distribution of \$4.2 million ERRP Funds, Montana



### Wasn't so simple Small Business Tax Credit

#### 3 SIMPLE STEPS

If you are a small employer (business or tax-exempt) that provides health insurance coverage to your employees, determine if you may qualify for the **Small Business Health Care Tax Credit** by following these three simple steps:

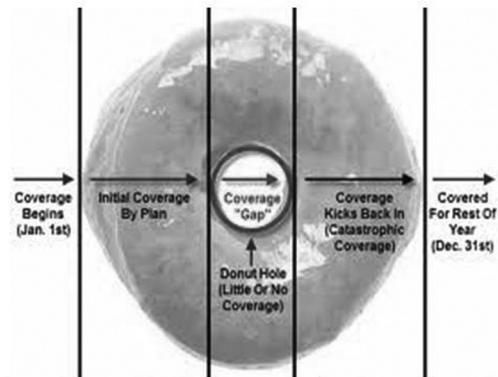


**3** You pay at least half of the insurance premiums for your employees at the single (employee-only) coverage rate, then

you may be able to claim the **Small Business Health Care Tax Credit**. Find out more information at [IRS.gov](http://IRS.gov)



Notes



	# of Gap Beneficiaries	Total Gap Discount	Average Gap Discount
<b>MONTANA</b>	<b>10,415</b>	<b>\$6,409,940</b>	<b>\$615</b>
<b>Lewistown</b>	<b>140</b>	<b>\$89,438</b>	<b>\$639</b>
<b>Denton</b>	<b>13</b>	<b>\$6,938</b>	<b>\$534</b>
<b>Fergus County</b>	<b>188</b>	<b>\$117,798</b>	<b>\$627</b>

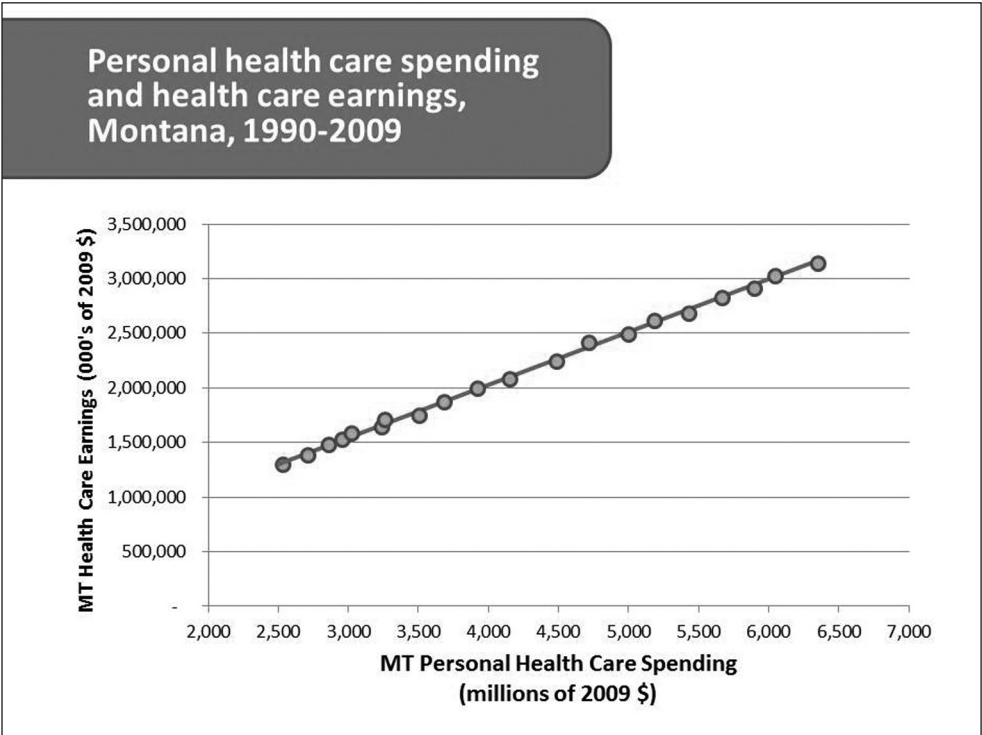
**Premiums increase if you are a person of “means”**

Medicare Part B Premiums		
Joint Tax Return (000's AGI)	Monthly Increase	Total Monthly Premium
≤\$170	\$0	\$115.40
>\$170 ≤\$214	\$46.10	\$161.50
>\$214 ≤\$320	\$115.30	\$230.70
>\$320 ≤\$428	\$184.50	\$299.90
> \$428	\$253.70	\$369.10

Medicare Part D Premiums		
Joint Tax Return (000's AGI)	Monthly Increase	Total Monthly Premium
≤ \$170	\$0	\$41.43
> \$170 ≤ \$214	\$12.00	\$53.43
> \$214 ≤ \$320	\$31.10	\$72.53
> \$ 320 ≤ \$428	\$50.10	\$91.53
> \$428	\$69.10	\$110.53

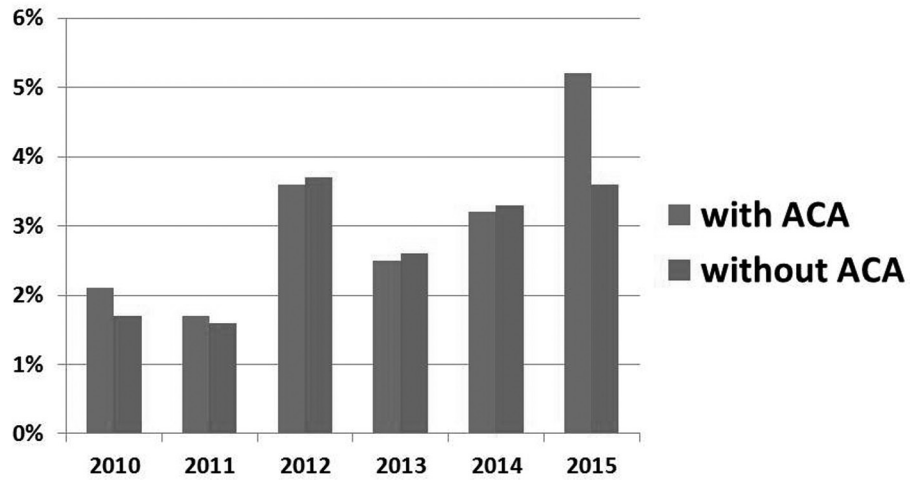
### Medicare and Medicaid per enrollee spending in Montana

	Average Annual Growth (%)		% of MT total personal health care spending			% of U.S. per enrollee spending		
	'98-'04	'04-'09	1998	2004	2009	1998	2004	2009
Medicare	6.3	6.3	17.4	17.2	19.3	73	76	73
Medicaid	3.3	5.9	13.7	13.5	13.2	122	123	146

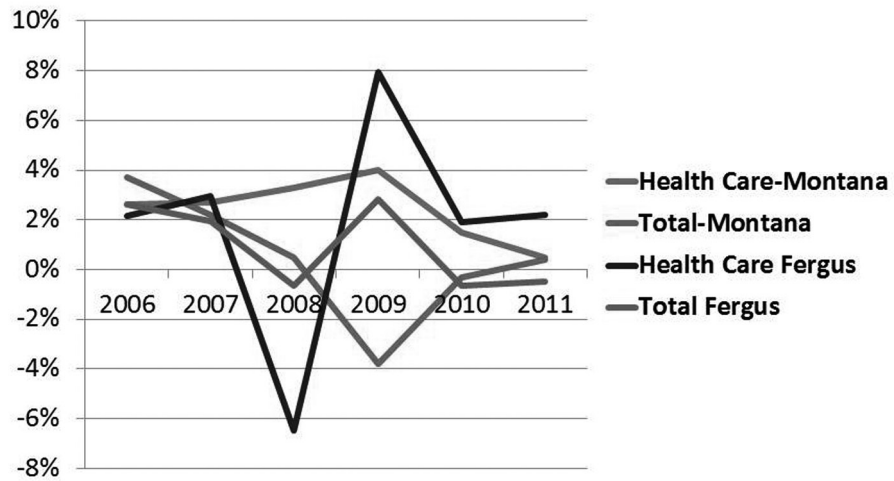


Notes

**Projected annual percent change in real health care earnings, Montana**



**Fergus County Health Care Employment Growth**





**Economic recovery?**



**Challenge to the ACA?**



**No historical experience for ACA reforms?**



**Provider responses?**

# 2012 Montana Agricultural Outlook

**George Haynes**

Department of Agricultural Economic & Economics  
MSU Extension

Data Source: National Agricultural Statistics Service  
Montana Field Office



Mountains & Minds

## 2011 “Recap”

### ▪ Crops

- All wheat prices – up 26%
- All wheat production – down 17%
  - Spring Wheat – production down 29%
- Pulse crops

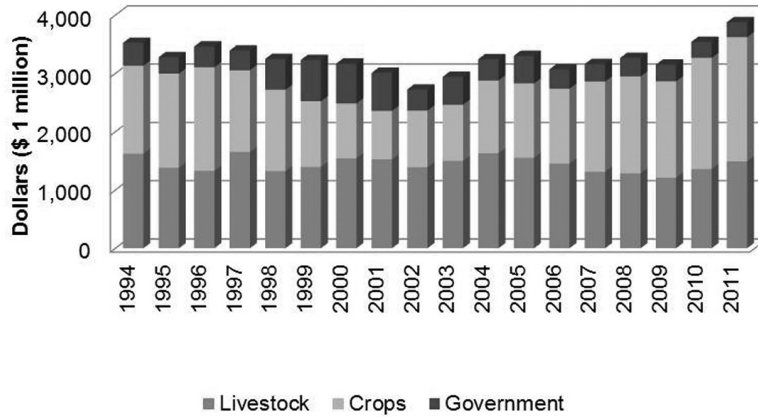
### ▪ Cattle

- Cattle and Calf Prices – up 15%+
- Cow Herd - down by 2%, but total herd value is record high



Mountains & Minds

## Gross Revenue Estimates (2011 dollars)

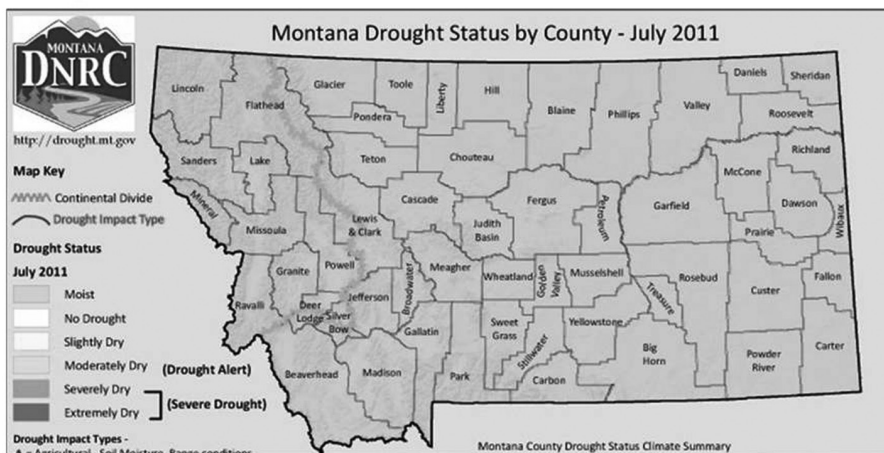


MONTANA STATE UNIVERSITY

EXTENSION

Mountains & Minds

## Drought Status – July 2011



MONTANA STATE UNIVERSITY

EXTENSION

Mountains & Minds

Notes



Courtesy of the Billings Gazette

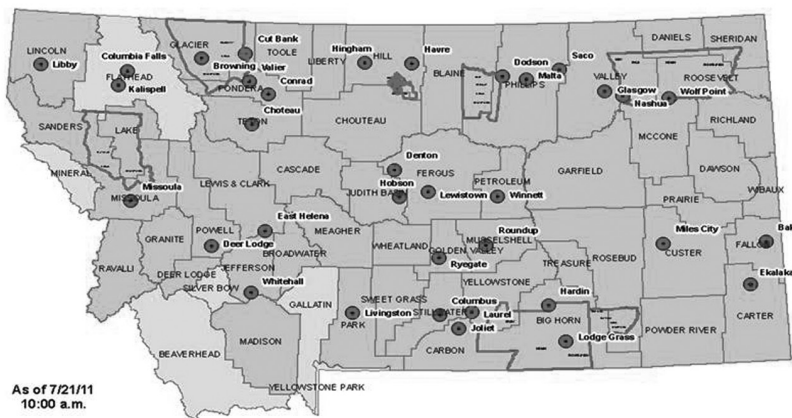


Courtesy of the Billings Gazette



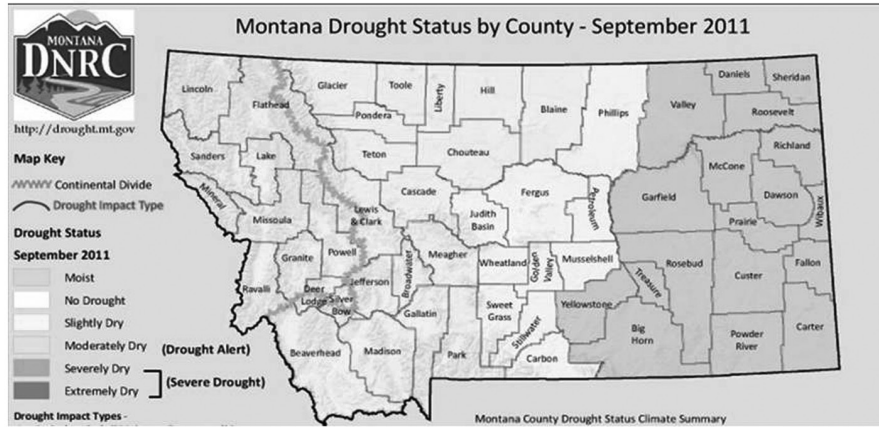
Courtesy of the Billings Gazette

## Locally Declared Emergencies as of July 21, 2011



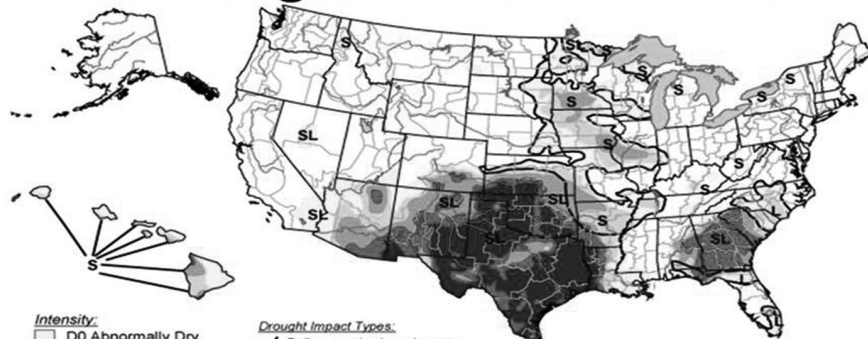
Notes

## Drought Status – September 2011



## U.S. Drought Monitor

October 11, 2011  
Valid 8 a.m. EDT



**Intensity:**

- D0 Abnormally Dry
- D1 Drought - Moderate
- D2 Drought - Severe
- D3 Drought - Extreme
- D4 Drought - Exceptional

**Drought Impact Types:**

- ~ Delineates dominant impacts
- S = Short-Term, typically <6 months (e.g. agriculture, grasslands)
- L = Long-Term, typically >6 months (e.g. hydrology, ecology)

The Drought Monitor focuses on broad-scale conditions. Local conditions may vary. See accompanying text summary for forecast statements.

<http://droughtmonitor.unl.edu/>



Released Thursday, October 13, 2011  
Authors: R. Tinker/M. Rosencrans, NOAA/NWS/NCEP/CPC

## CROPS (*GRAIN, HAY & PULSES*)

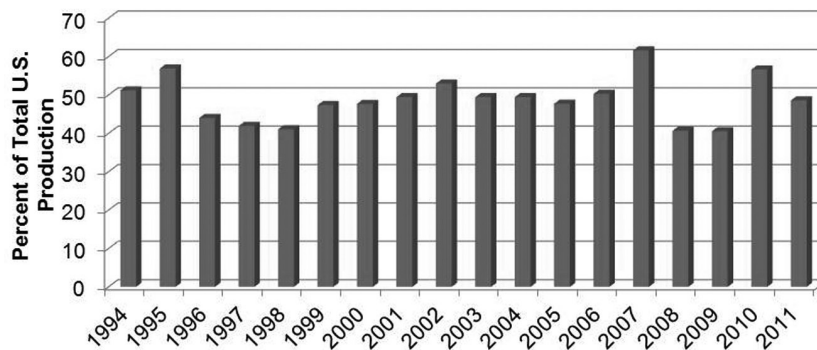


**MONTANA**  
STATE UNIVERSITY

EXTENSION

Mountains & Minds

### Wheat Exports percent of total U.S. production



Total U.S. Exports = 34.5 mmt in 2010/2011 and 25.2 mmt in 2011/2012



**MONTANA**  
STATE UNIVERSITY

EXTENSION

Mountains & Minds

## Where are these exports going?

- **Wheat (50% of total U.S. wheat exports)**
  - Sub-Saharan Africa            4.9 million metric tons
  - Egypt                                3.8
  - Japan                                 3.3
  - Mexico                               2.8
  - Philippines                        1.8
  
- **Export competition**
  - Kazakhstan, Australia, Russia, Canada

## “Biggest Losers – Wheat Production” 2010 to 2011

State	Total Production (1,000 bu.)			%
	2010	2011	Difference	
North Dakota	361,550	205,845	-155,705	-43
Kansas	360,000	276,500	-83,500	-23
Texas	127,500	49,400	-78,100	-61
Oklahoma	120,900	70,400	-50,500	-42
Montana	215,360	178,290	-37,070	-17
Colorado	108,234	81,828	-26,406	-24
South Dakota	123,475	104,796	-18,679	-15
Minnesota	88,070	70,456	-17,614	-20

### Global Wheat Market Shares

Country	2010/2011 mmt	shares %	2011/2012 mmt	shares %
Australia	26.00	4.0	25.00	3.7
Canada	23.17	3.6	24.20	3.6
China	115.18	17.8	117.00	17.2
EU-27	135.61	20.9	136.33	20.0
India	80.80	12.5	85.93	12.6
FSU-12	80.97	12.5	110.45	16.2
U.S.	60.06	9.3	54.65	8.0
Other	126.37	19.5	127.64	18.7
Total	648.16	100.0	681.20	100.0

Source, WASDE-499, October 12, 2011

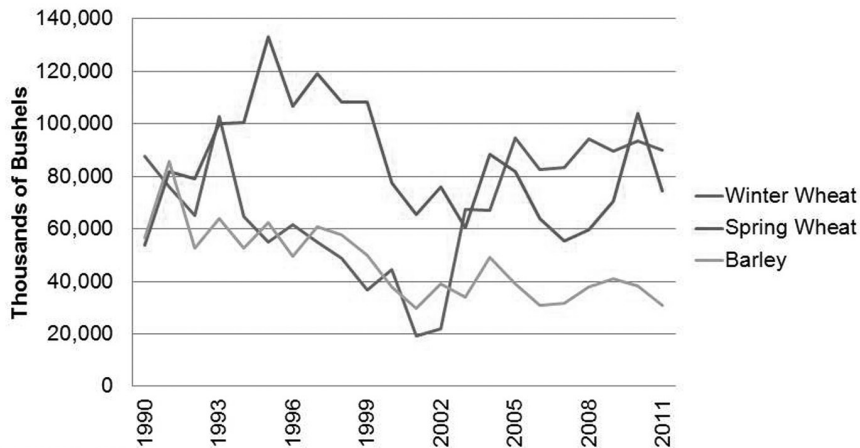


**MONTANA**  
STATE UNIVERSITY

EXTENSION

Mountains & Minds

### Grain Production

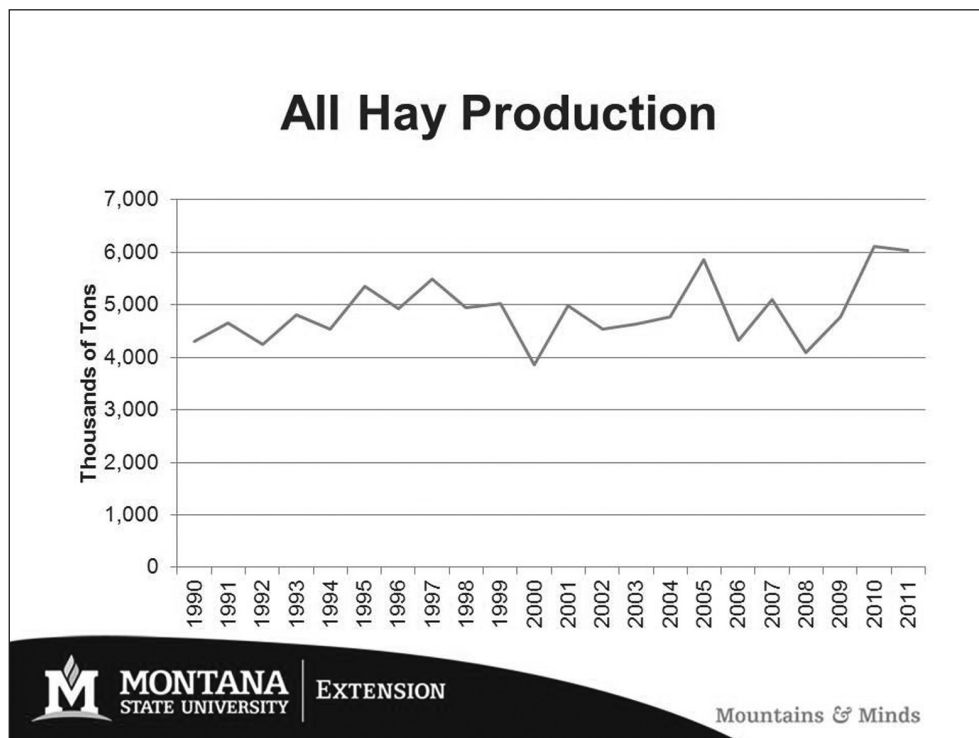
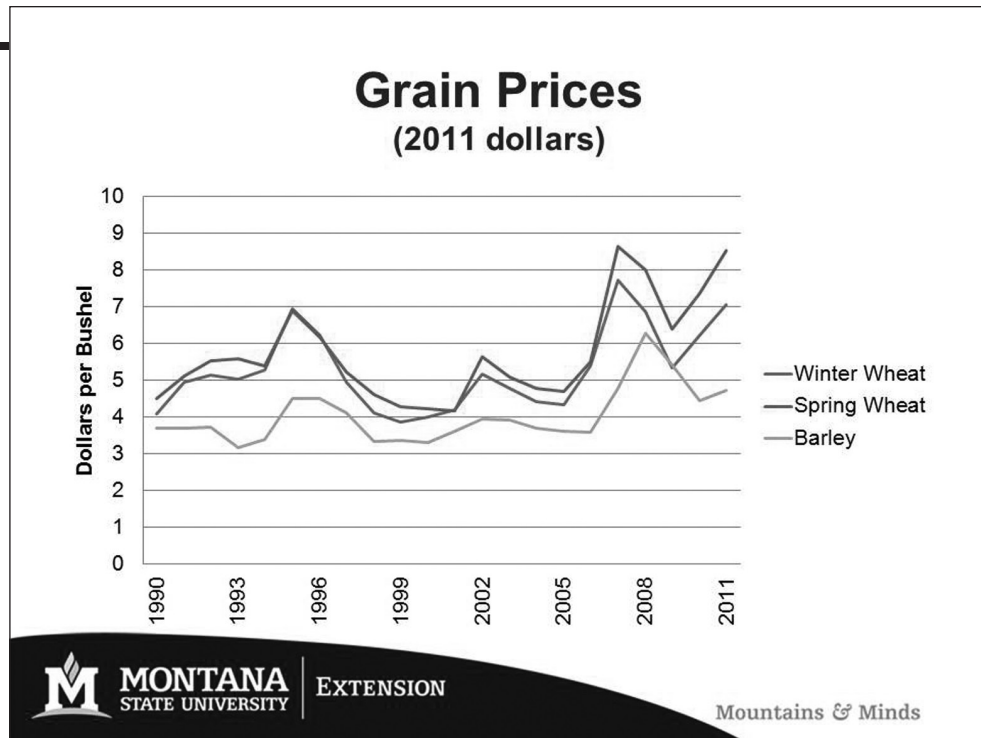


**MONTANA**  
STATE UNIVERSITY

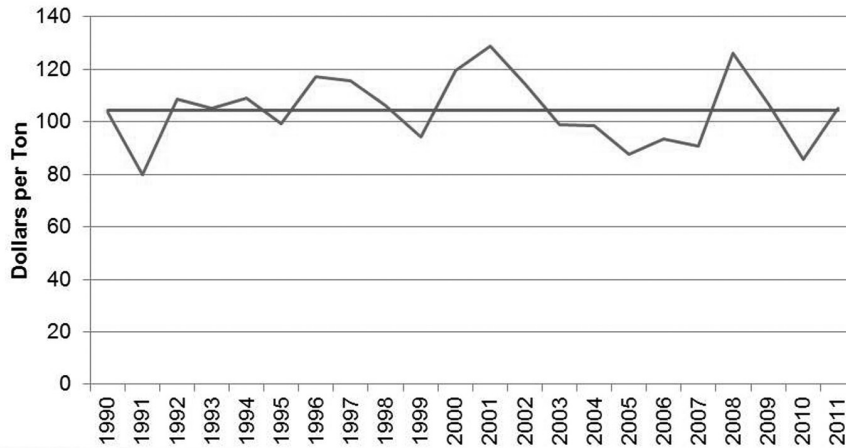
EXTENSION

Mountains & Minds

Notes



### All Hay Prices (2011 dollars)

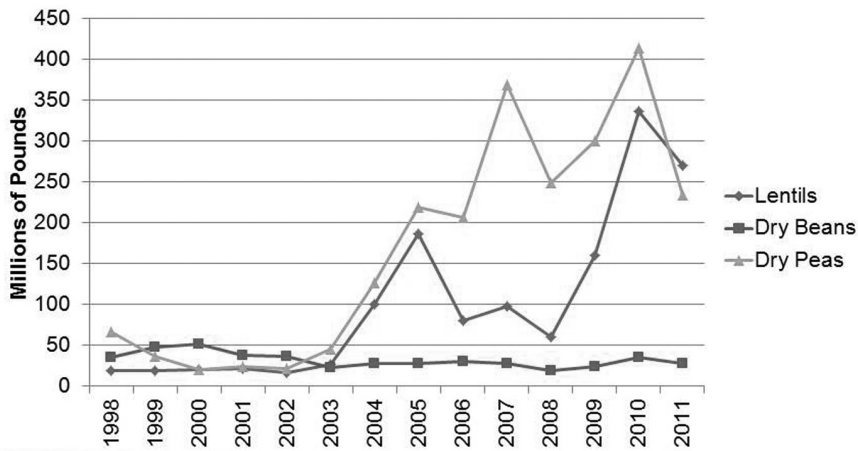


MONTANA STATE UNIVERSITY

EXTENSION

Mountains & Minds

### Pulse Crop Production



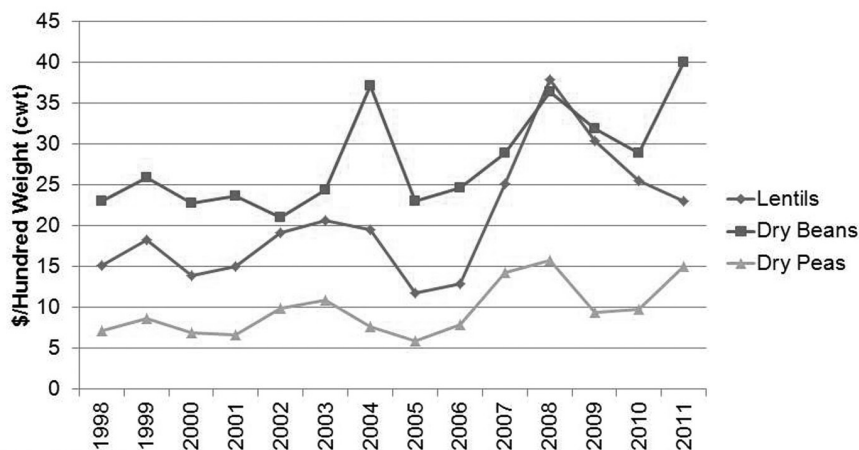
MONTANA STATE UNIVERSITY

EXTENSION

Mountains & Minds

Notes

### Pulse Crop Prices



### Share of Pulse Crops Grown in MT

Crop	Montana (1,000 cwt)	U.S. (1,000 cwt)	Montana Share (%)
Dry Beans	359	31,801	1.1
Pinto Beans	275	13,814	2.0
Garbonzo Beans	84	1,939	4.3
Lentils	3,359	8,657	38.8
Dry Peas	4,140	14,221	29.1
Austrian Winter Peas	110	237	46.4

## Futures Prices (not basis adjusted – 12/29/11)

Location	Units	3/12	5/12	7/12	9/12
Minneapolis Grain Exchange					
Hard Red Spring Wheat	\$/bu	8.55	8.31	8.17	7.90
Kansas City Board of Trade					
Winter Wheat	\$/bu	7.09	7.17	7.25	7.37
Chicago Board of Trade					
Corn	\$/bu	6.45	6.53	6.59	6.10

Hay and pulse crops

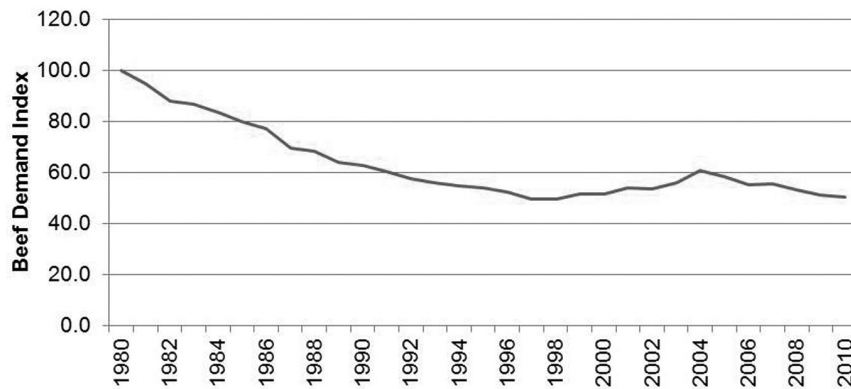
## Montana Wheat 2012

- **2012 Winter Wheat Plantings → ???**
- **Influence of corn prices (public policy)**
- **2012 Production/Prices**
  - **MT 2012 All Wheat Price: optimistic**
    - **Early 2012– prices caution (Russia, Ukraine, Kazakhstan)**
    - **Late 2012– two important factors**
      - **Demand – worldwide economic conditions**
      - **Supply – worldwide growing conditions**

Notes

# CATTLE

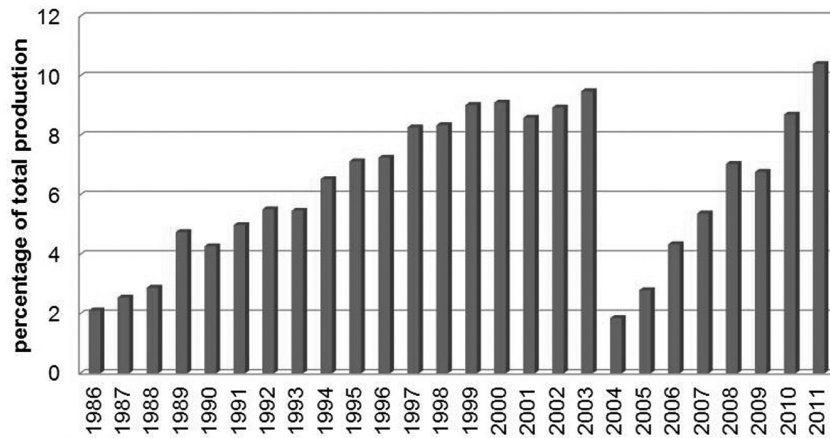
## Consumer Demand for Beef (annual choice retail beef demand index)



[http://www.agmanager.info/livestock/marketing/graphs/Tonsor/Annual\\_ChoiceBeefDemandIndex\\_Table\\_1990.htm](http://www.agmanager.info/livestock/marketing/graphs/Tonsor/Annual_ChoiceBeefDemandIndex_Table_1990.htm)  
54.1 lbs./capita (USDA)

## U.S Beef Exports

percentage of production, beef & veal, carcass wt.



**MONTANA**  
STATE UNIVERSITY

EXTENSION

Mountains & Minds

## Exports – who’s buying U.S. beef

- 90% of U.S. beef exports

Country	Export Value	Growth '10 – '11
Japan	\$ 662 m.	38%
Mexico	670 m.	---
South Korea	540 m.	50%
Canada	730 m.	39%
Russia	80 m.	72%

USDA Livestock, Dairy and Poultry Outlook, 10/18/2011



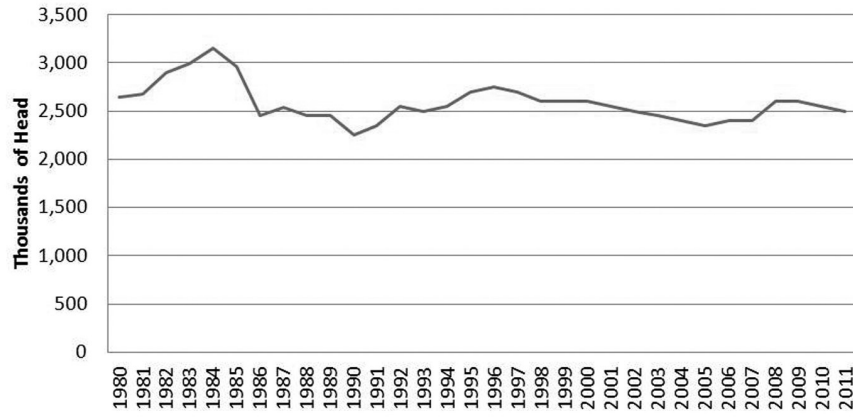
**MONTANA**  
STATE UNIVERSITY

EXTENSION

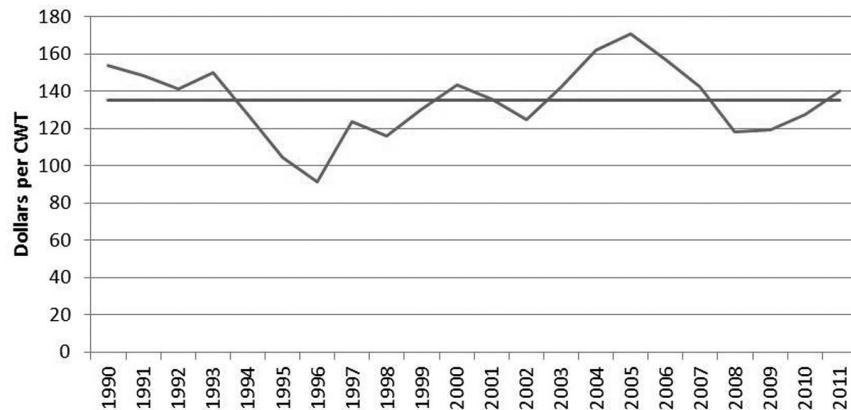
Mountains & Minds

Notes

### Montana Cattle Herd



### Calf Prices (2011 dollars)



NASS, 190 - 2010, MSU 2011 estimate

## Futures Prices (no basis adjustments – 12/29/11)

Location	04/12	06/12	08/12	12/12
Chicago Mercantile Exchange				
Feeder Cattle, cwt	151	152	153	153
Live Cattle, cwt	127	126	127	130

20% increase from 2009

## Montana Cattle 2012

- **Strong prices**
  - Global demand (growing emerging economies)
  - Strength of the U.S. dollar
  
- **Opportunity to increase cattle herd**
  - Southern U.S. drought conditions
  - Aging rancher population (interest in expansion)

Notes

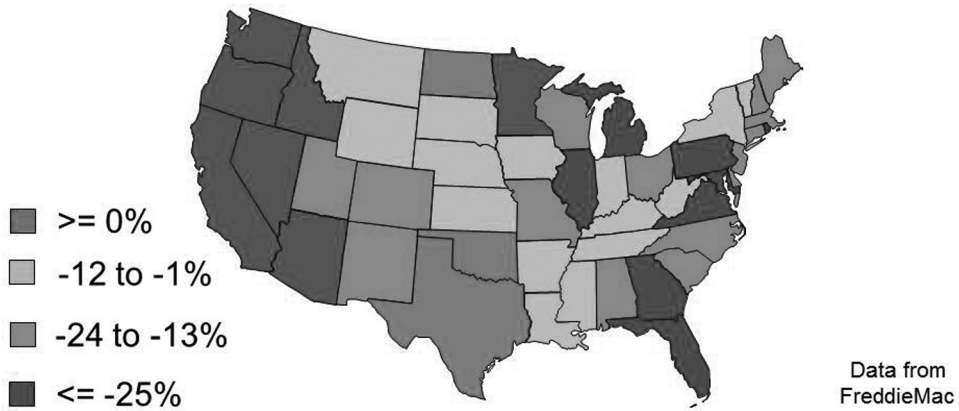


## Montana's Housing Market

## National Conditions



## Change in Home Prices 2006 – 2011



## 2011 Statistics



**Existing  
Homes**

**4.26 Million**

**\$164,500**

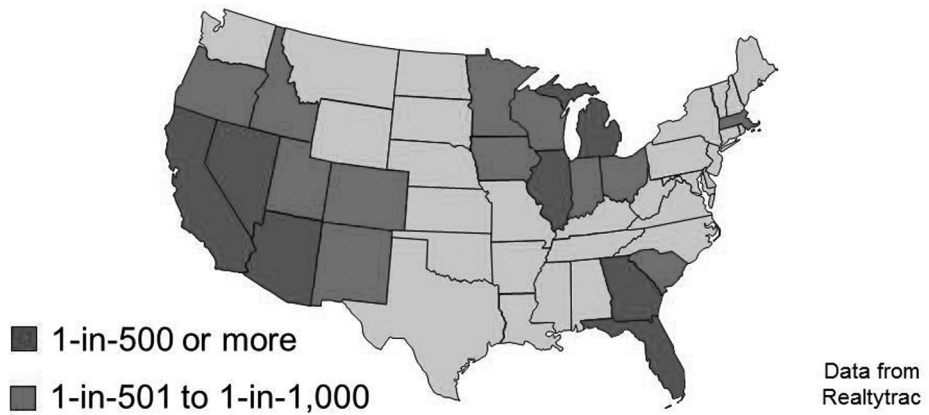
**New  
Construction**

**607,000**

**\$212,000**

Notes

## Foreclosure Rates Dec 2011



## Shadow Inventory

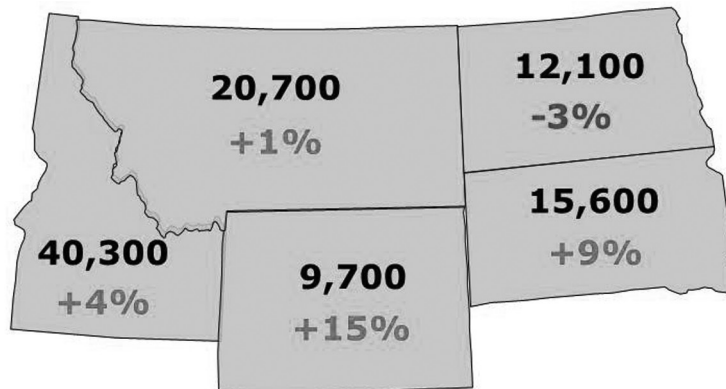


14 Million Units

## Regional Conditions

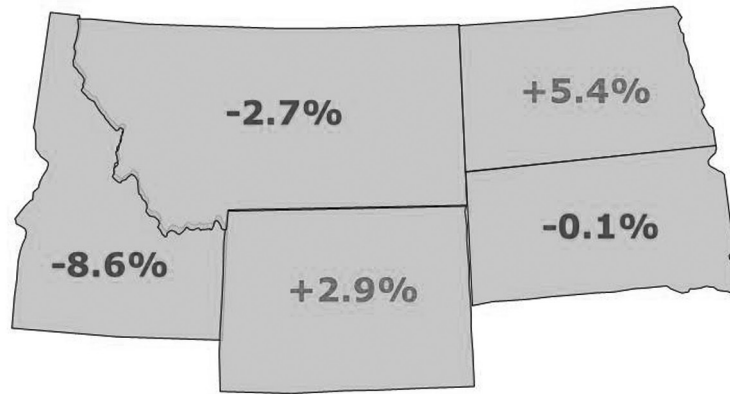


## Number of Sales in 2011

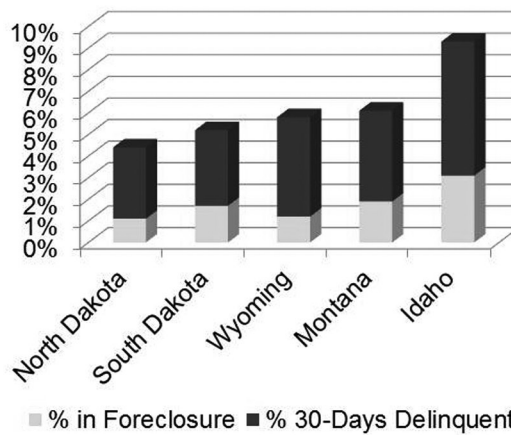


Notes

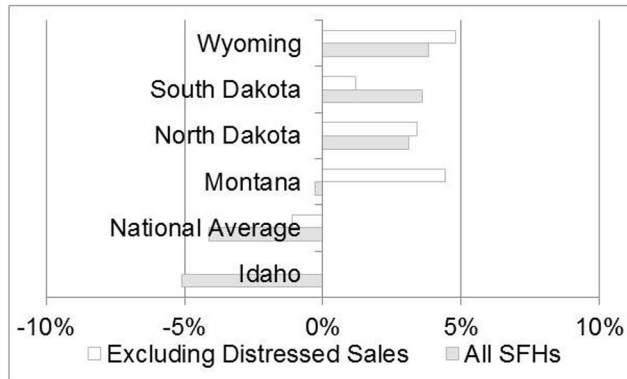
### 12-Month Price Change



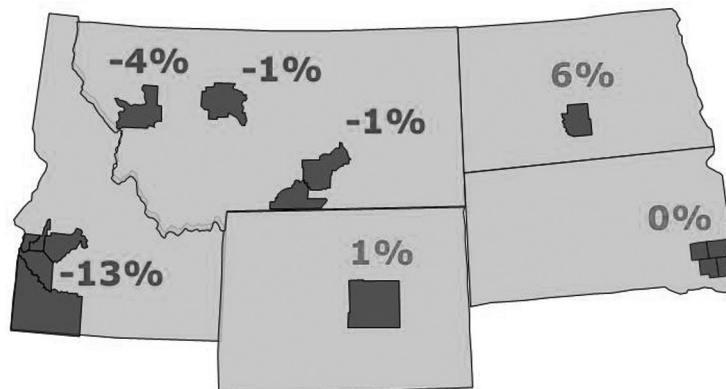
### Foreclosures and Delinquencies



## Distressed Sales Reduce Price Growth

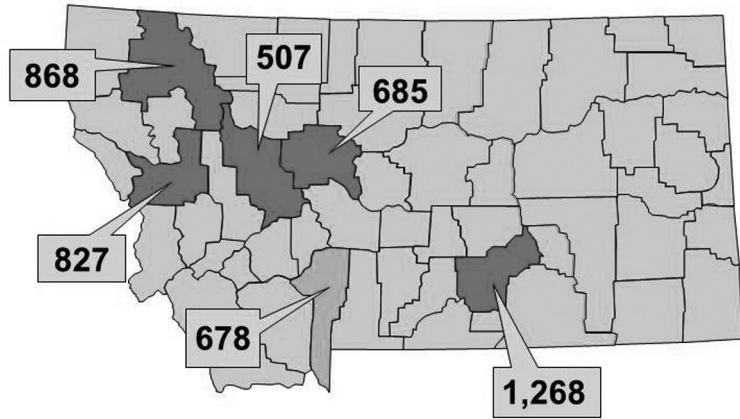


## Metro Area Prices

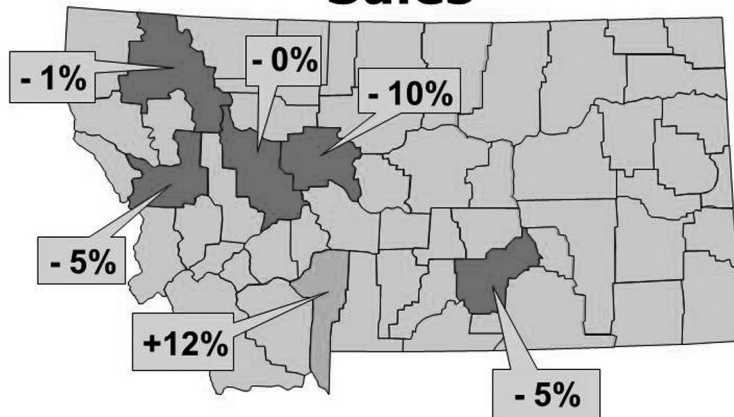


Notes

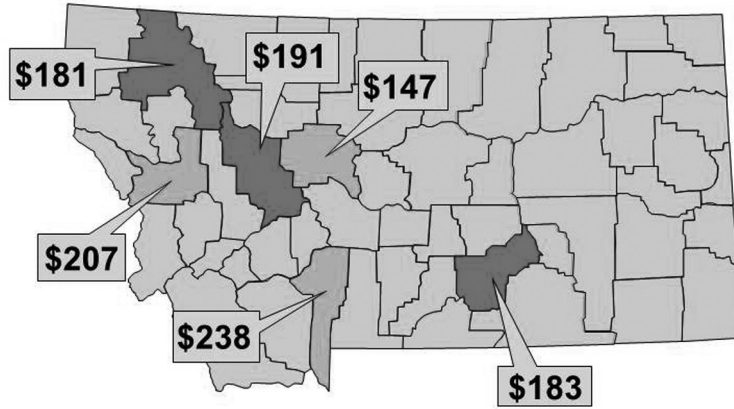
### Number of Sales



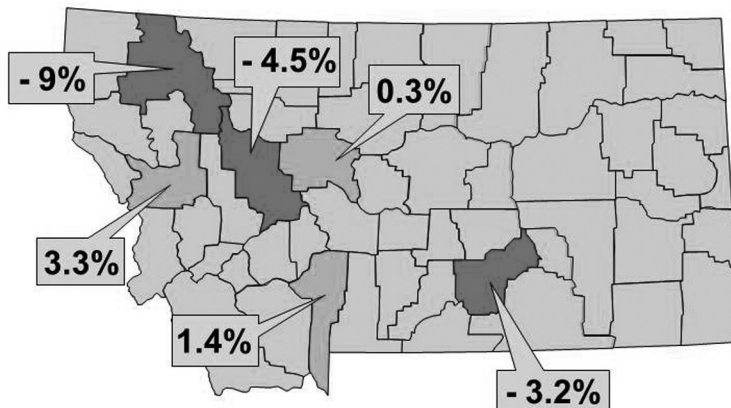
### % Change in Number of Sales



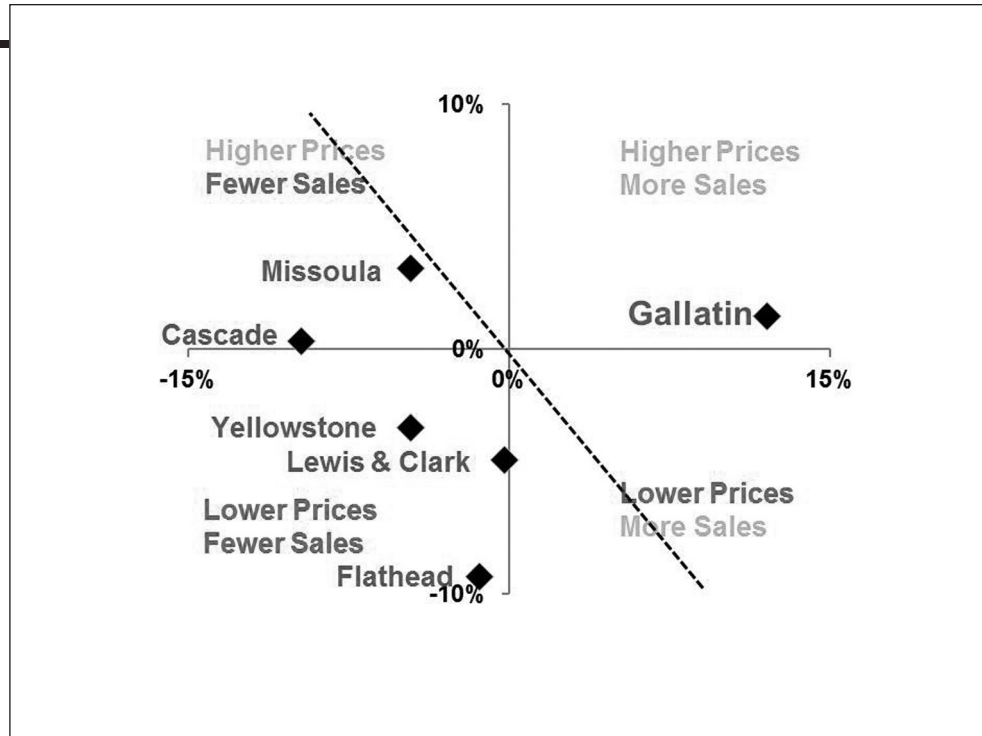
### Median Prices (in \$ 1,000s)



### Median Prices (in \$ 1,000s)



Notes



## MT Housing Starts



### From Peak

- Silver Bow -25%
- Yellowstone, L&C -50%
- Missoula, Flathead -60%
- Many Other Counties -80%

## 2012 Conditions



- **Incomes Flat**
- **Limited Wealth**
- **Abundant Debt**
- **Shadow Inventories**
- **Consumer Confidence**

## 2012 Forecast



### Overall

- Lower Prices**
- Flat Sales**
- Higher Rents**
- More Construction**

## Montana's Rental Markets



### Apartment Rent

	1 Bedroom	2 Bedroom	3+ Bedroom
<b>Butte</b>	\$ 437	\$ 556	\$ 650
<b>Billings</b>	\$ 448	\$ 638	\$ 837
<b>Great Falls</b>	\$ 454	\$ 654	\$ 875
<b>Helena</b>	\$ 488	\$ 699	\$ 1,036
<b>Bozeman</b>	\$ 489	\$ 641	\$ 1,123
<b>Kalispell</b>	\$ 501	\$ 626	\$ 817
<b>Missoula</b>	\$ 626	\$ 694	\$ 747

## House Rent

	1 Bedroom	2 Bedroom	3+ Bedroom
<b>Butte</b>	\$ 530	\$ 680	\$ 868
<b>Billings</b>	\$ 604	\$ 880	\$ 1,313
<b>Great Falls</b>	\$ 450	\$ 875	\$ 1,250
<b>Helena</b>	\$ 510	\$ 873	\$ 1,030
<b>Bozeman</b>		\$ 1,042	\$ 1,377
<b>Kalispell</b>		\$ 838	\$ 1,002
<b>Missoula</b>		\$ 1,028	\$ 1,419

## Premium for Renting a House

	1 Bedroom	2 Bedroom	3+ Bedroom
<b>Butte</b>	+21%	+22%	+34%
<b>Billings</b>	+35%	+38%	+57%
<b>Great Falls</b>	-1%	+34%	+43%
<b>Helena</b>	+5%	+25%	-1%
<b>Bozeman</b>		+63%	+23%
<b>Kalispell</b>		+34%	+23%
<b>Missoula</b>		+48%	+90%

Notes

**Premium: 2 BR House vs. 3 BR Apt.**

	1 BR House vs. 2 BR Apt	2 BR House vs. 3 BR Apt
<b>Butte</b>	-5%	+5%
<b>Billings</b>	-5%	+5%
<b>Great Falls</b>	-31%	0%
<b>Helena</b>	-27%	-16%
<b>Bozeman</b>		-7%
<b>Kalispell</b>		+3%
<b>Missoula</b>		+38%

# Montana Manufacturing: 2012 Outlook

**BUREAU OF  
BUSINESS  
AND ECONOMIC  
RESEARCH**

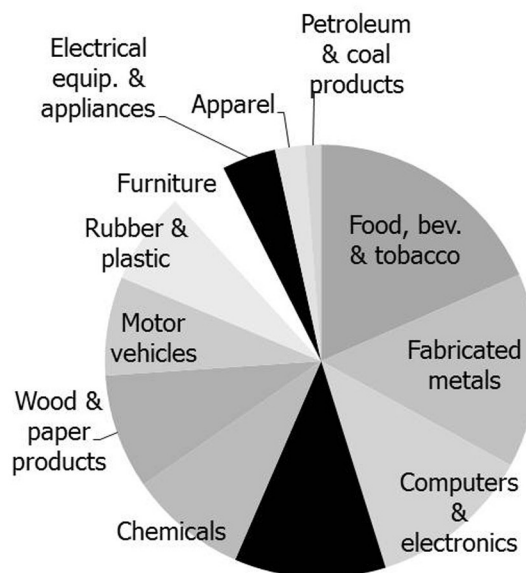
**Todd A. Morgan, CF**

## U.S. Manufacturing

➤ **5.5 million fewer jobs than in 2000**

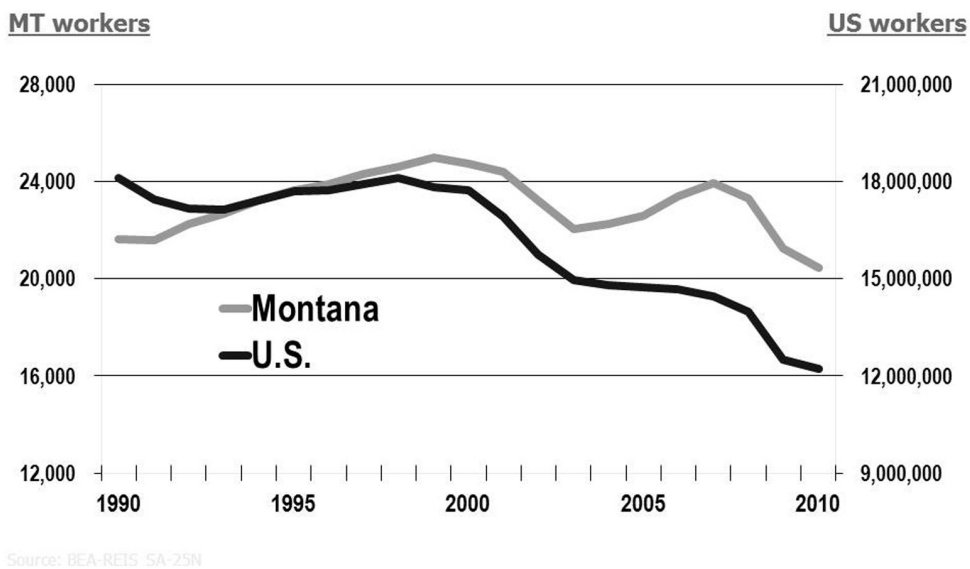
➤ **Annual worker income down by \$49 billion**

➤ **Gross output down by \$296 billion**



Notes

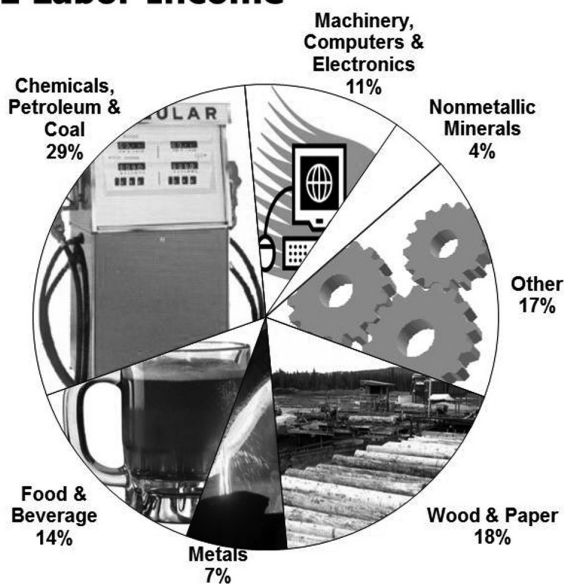
## Montana & U.S. Manufacturing Employment 1990-2010



## Montana Manufacturing 2011 Labor Income

Total Employment:  
~19,938

Total Labor Income:  
\$1.08 billion



## **Fergus County Manufacturing**

**Total Labor Income:  
\$16.5 million**

**Total Employment:  
380**

## **2011-2012 Montana Manufacturers Survey**

- annual survey
- conducted in December
- open-ended & multi-choice questions
- current & coming year
- 211 firms participated
- response rate >88%

Notes

## Montana Manufacturing 2011 Recap

**Better than 2010 for many firms**

**Employment down at one-quarter  
of firms**

**Many firms reported increased  
production, sales, and profits**

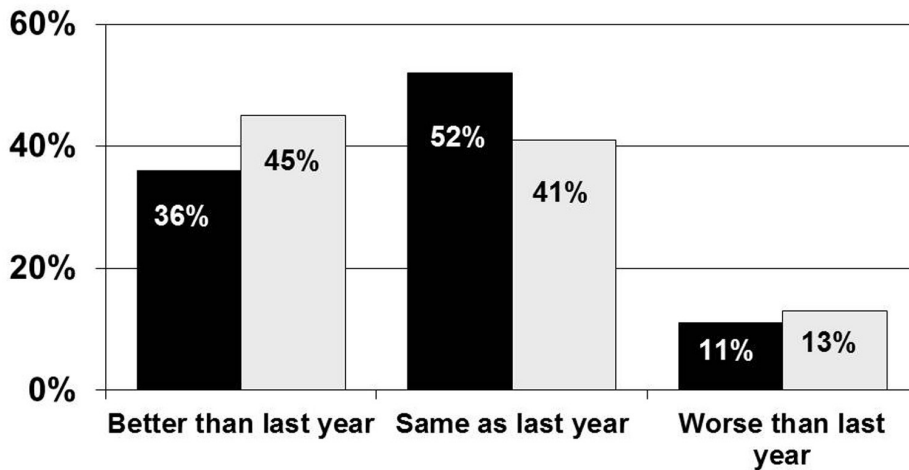
**Few firms reported curtailments**

**44% of firms did make major  
capital expenditures**

## Montana Manufacturing Outlook for the Coming Year

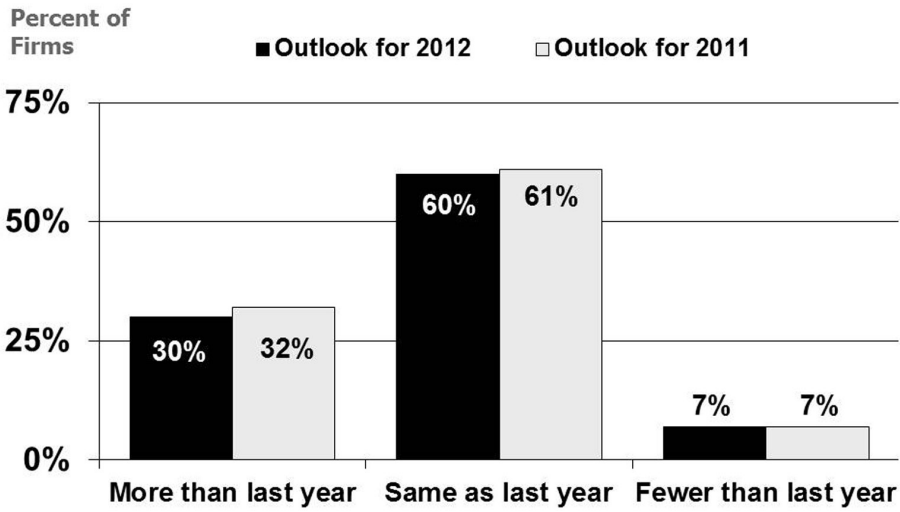
Percent of  
Firms

■ Outlook for 2012    □ Outlook for 2011

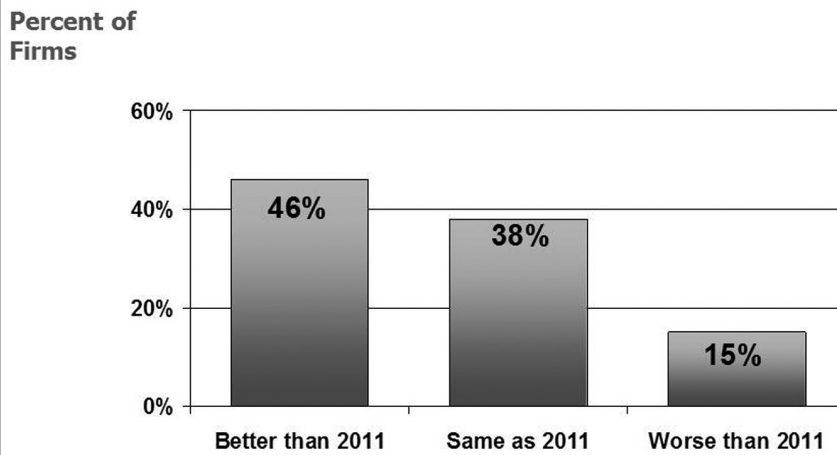


Notes

## Manufacturing Employment in the Coming Year



## Fergus County Manufacturing Outlook for 2012



## **Montana Manufacturing Forecast for 2012**

**Little change is expected**

**Recovery dependent on broader US  
economy & international factors**

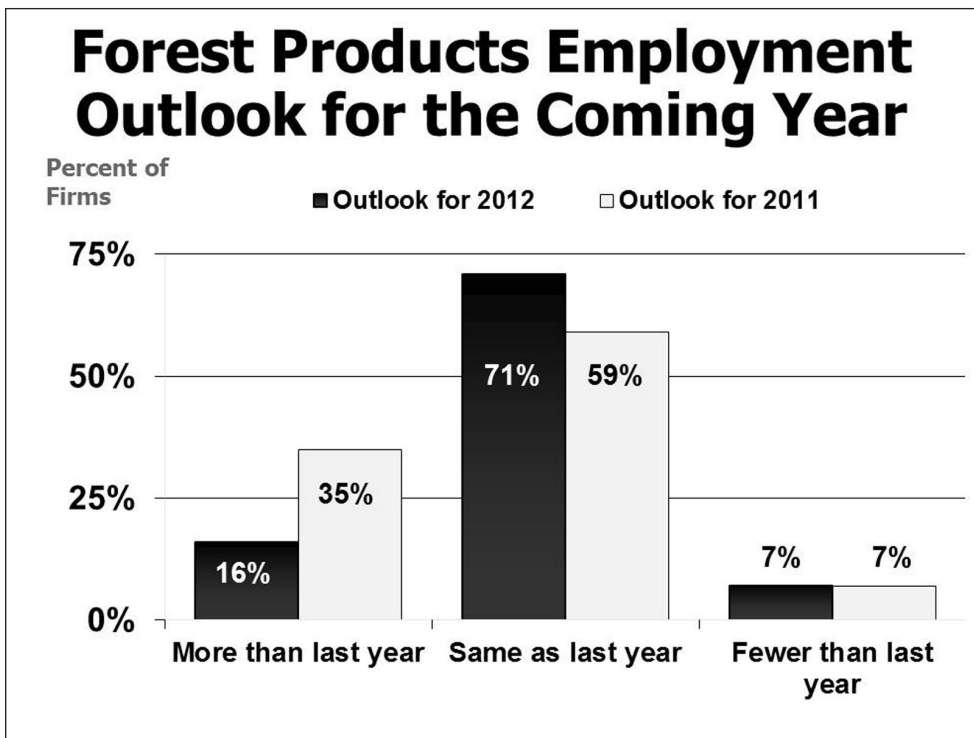
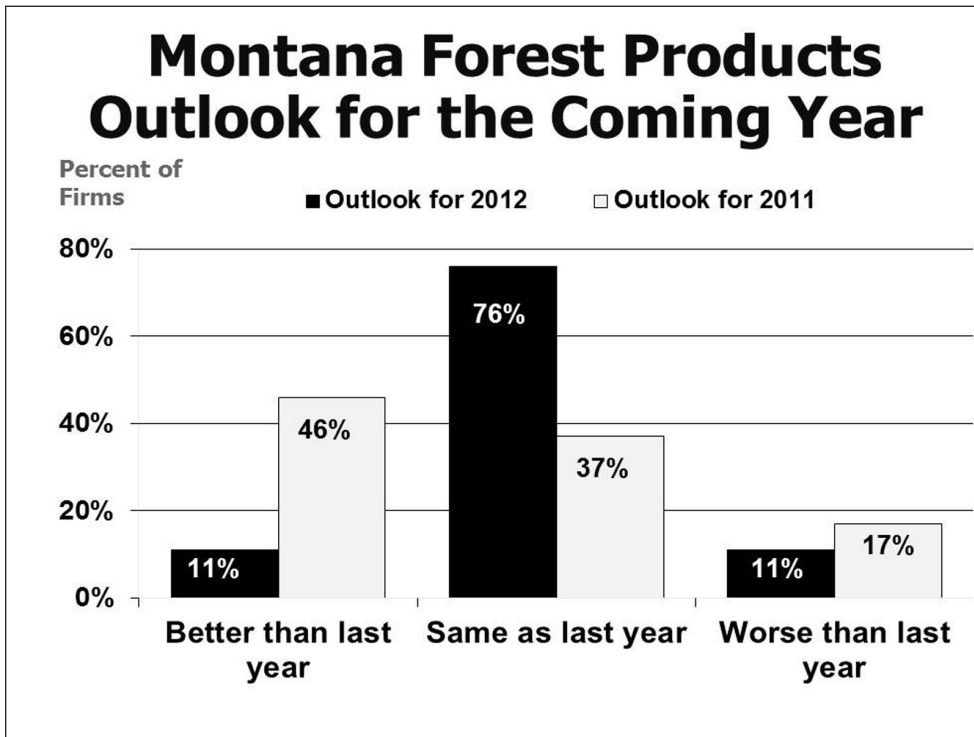
**Health insurance costs & workers  
comp remain the greatest concerns**

**Half of MT manufacturers expect their  
energy costs to increase**

## **Montana Forest Products: 2012 Outlook**

**BUREAU OF  
BUSINESS  
AND ECONOMIC  
RESEARCH**

**Todd A. Morgan, CF**



## **Forest Industry Conditions**

- | **Slow recovery in US housing**
- | **Chinese lumber & log demand could impact Montana**
- | **Wood energy markets are slowly emerging**
- | **Retaining industry is important to forest landowners**
- | **The industry is changing**

## **Montana Forest Products Industry Forecast**

**2012 markets are expected to be somewhat better than 2011.**

**Timber harvest & lumber production may increase slightly.**

**Employment is expected to stay low.**

**Forests will become more expensive to manage.**

## Montana Chamber of Commerce Calendar of Events

### **Safety Training Workshops**

[www.MTSafetyChoices.com](http://www.MTSafetyChoices.com)

### **Montana Candidate Schools**

February 7-10, 2012

Great Falls, Missoula, Bozeman, Billings

### **Montana Chamber Summer Meeting**

June 20-21, 2012

Fort Benton

### **2012 Governors' Cup Golf Tournament**

August 2-4, 2012

Flathead Valley

[www.MontanaGovernorsCup2012.com](http://www.MontanaGovernorsCup2012.com)

### **Montana Goes to China Tour,**

October 8-17, 2012

[www.MontanaGoesToChina.com](http://www.MontanaGoesToChina.com)

### **Montana Chamber Annual Meeting**

October 10-11, 2012

Missoula



[www.MTSafetyChoices.com](http://www.MTSafetyChoices.com)



[www.MontanaGoesToChina.com](http://www.MontanaGoesToChina.com)



[www.ChamberChoices.com](http://www.ChamberChoices.com)

Check out  
**[www.MontanaChamber.com](http://www.MontanaChamber.com)**  
for the latest Montana business news and resources



# OUTLOOK 2012 PRESENTATIONS

Published with the support of the Montana Chamber of Commerce

## Midyear Update to the Economic Outlook

### **Kalispell**

August 2, 2012 (Thursday)  
Noon – 1:30 p.m.  
Kalispell Hilton Garden Inn

### **Billings**

August 7, 2012 (Tuesday)  
7:00 – 8:30 a.m.  
Billings Crowne Plaza

### **Bozeman**

August 7, 2012 (Tuesday)  
Noon – 1:30 p.m.  
Bozeman GranTree

### **Great Falls**

August 8, 2012 (Wednesday)  
7:00 – 8:30 a.m.  
Great Falls Hilton Garden Inn

### **Helena**

August 8, 2012 (Wednesday)  
Noon – 1:30 p.m.  
Helena Red Lion Colonial

### **Butte**

August 9, 2012 (Thursday)  
7:00 – 8:30 a.m.  
Butte Quality Inn & Suites  
(War Bonnet)

### **Missoula**

August 9, 2012 (Thursday)  
Noon – 1:30 p.m.  
Missoula Hilton Garden Inn

Check out

[www.MontanaChamber.com](http://www.MontanaChamber.com)

for the latest Montana business news and resources



Montana Chamber of Commerce  
Treasure State Investors

