



# Local Outlook: Custer County

By Paul E. Polzin

Director Emeritus

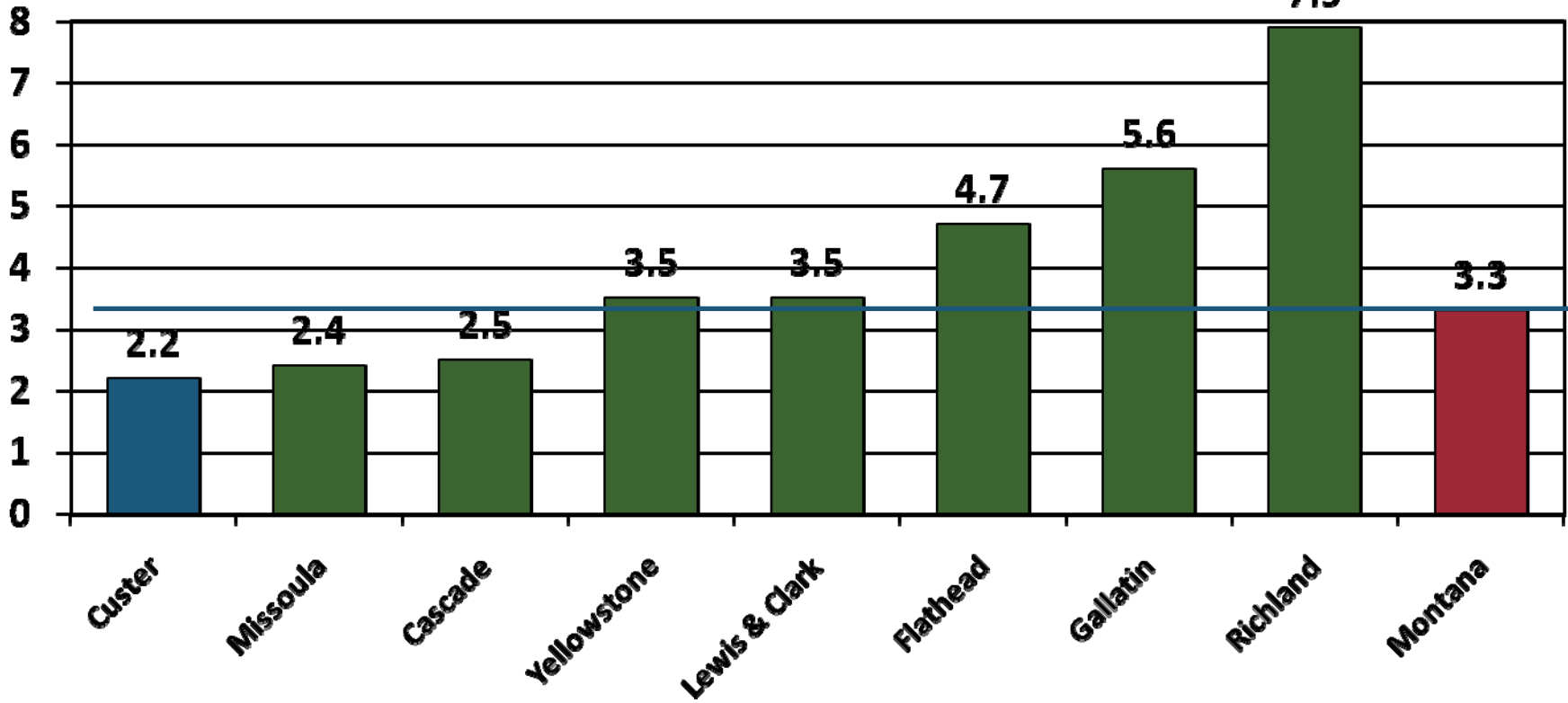
Bureau of Business and Economic Research

The University of Montana

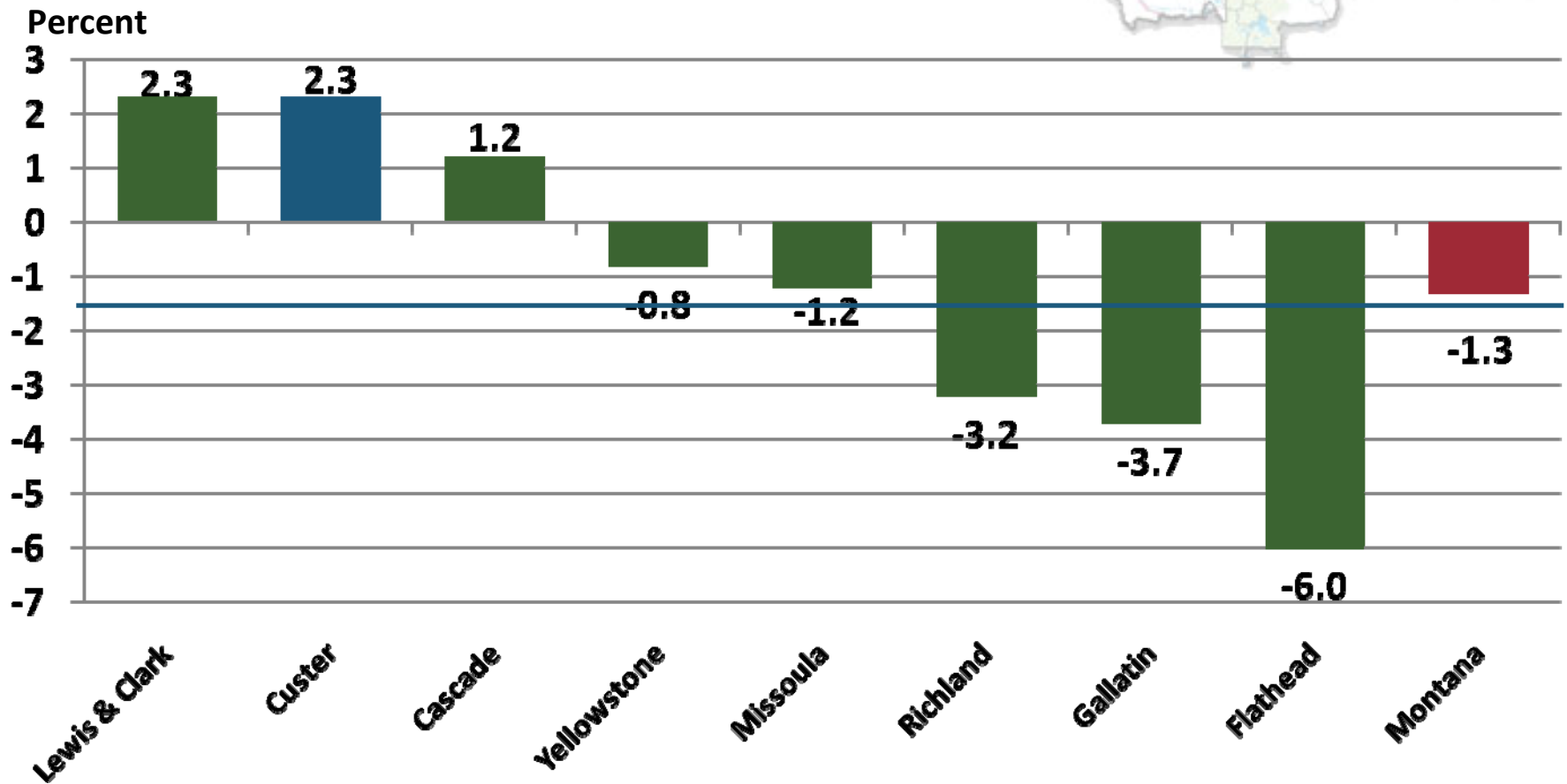


# Annual Percent Change in Nonfarm Labor Income (in Constant Dollars), 2001-2007

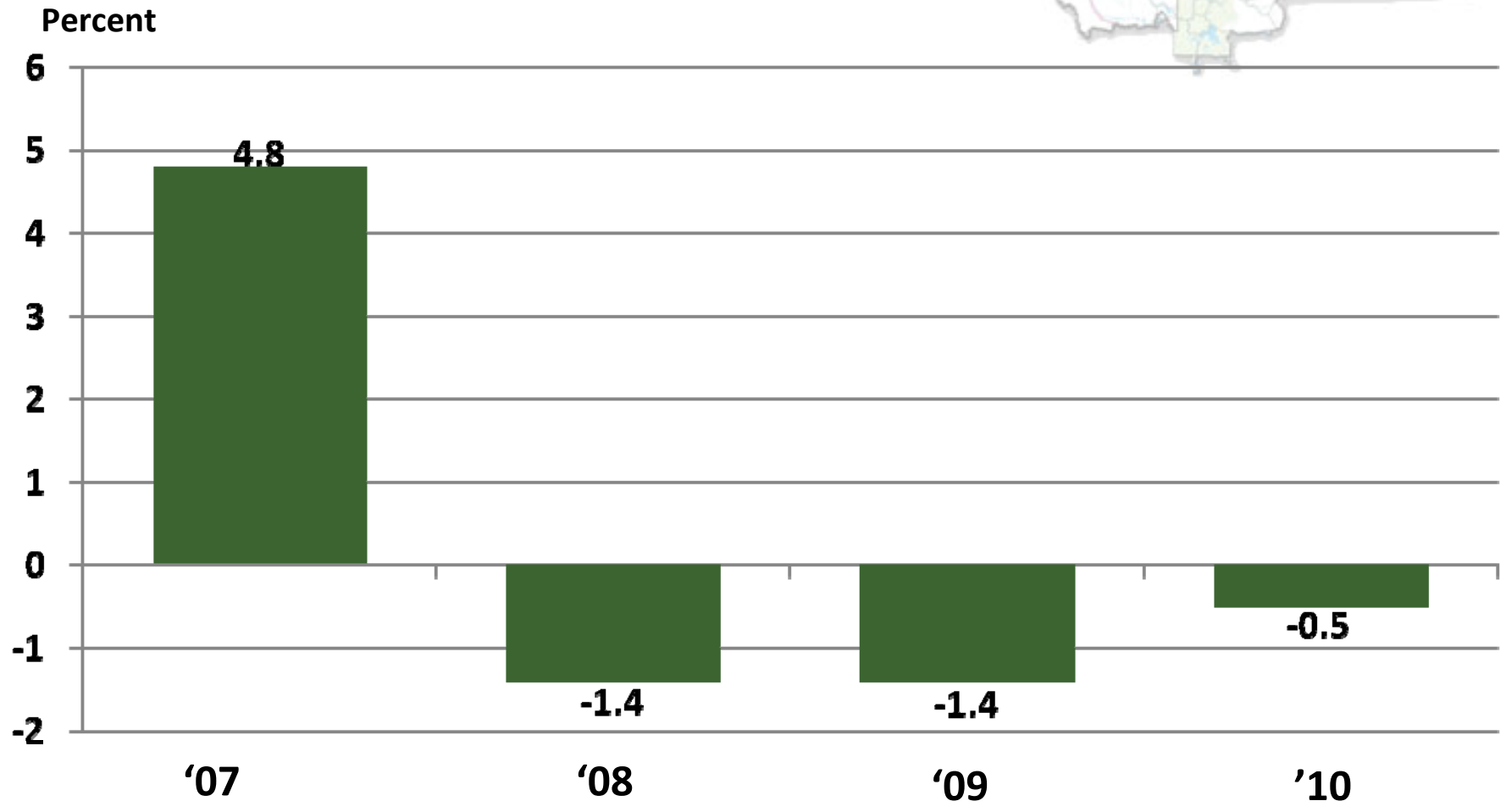
Percent




# Annual Percent Change in Nonfarm Labor Income (in Constant Dollars) , 2008-2009



# Annual Percent Change in Retail Trade Labor Income (in Constant Dollars), Custer County





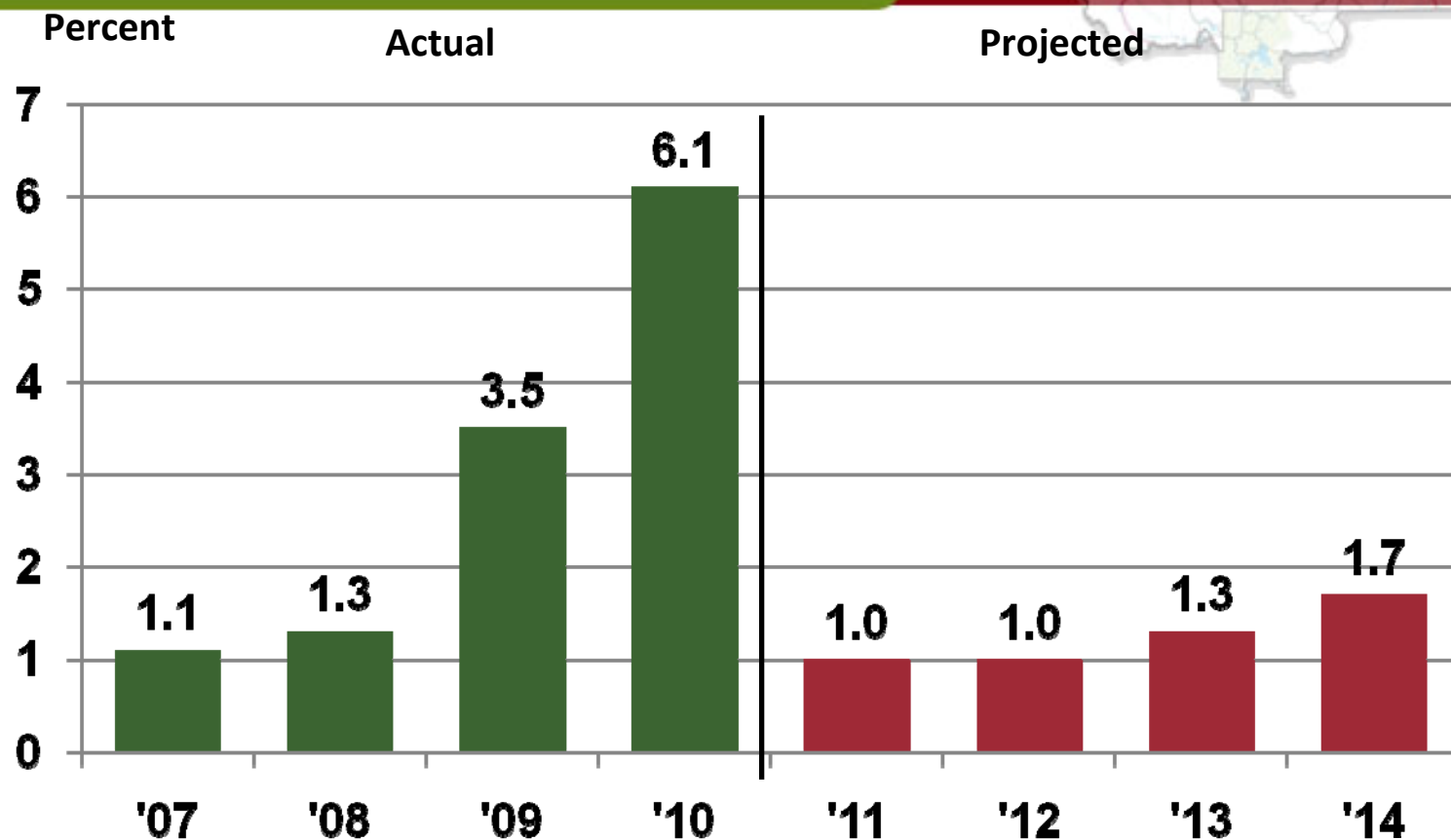


# Custer County's Economic Base 2008-2010

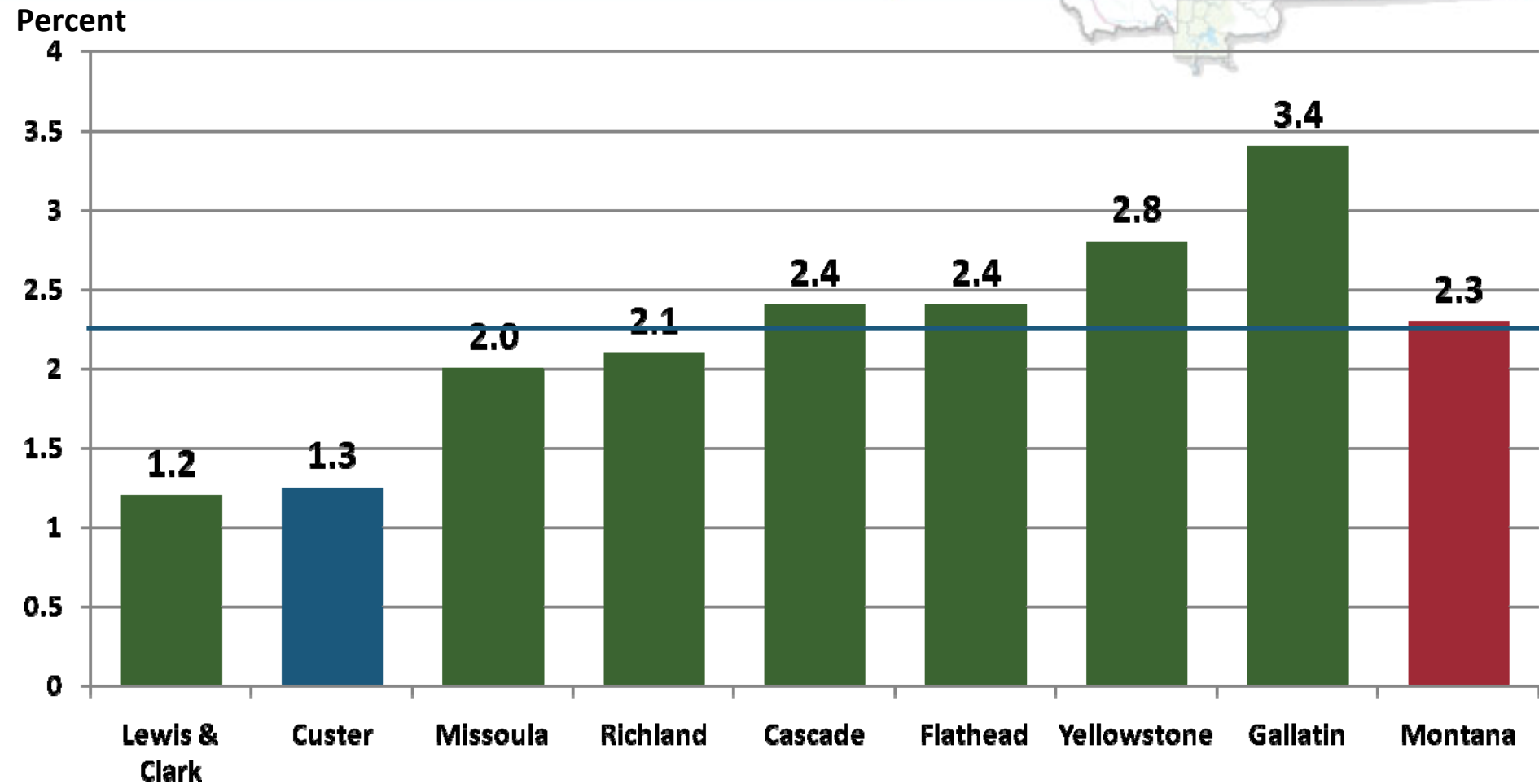
- Other 4%
- Manufacturing 5%
- Transportation 6%
- Ag. and Ag. Related 9%
- Trade Center and Health Care 16%
- State Gov't 27%
- Fed. Gov't 33%

Indirect Energy Impacts  
Stable at Best  
Slow Recovery  
Optimistic  
Growing Trade Center  
Slight Pay Increase  
Stable at Best

# Actual and Projected Change in Nonfarm Labor Income, Custer County, 2007-2014



# Projected Annual Percent Change in Nonfarm Labor Income (in Constant Dollars) 2010-2014





**Questions?**