



PRESCOTT ACTIVE FOREST MANAGEMENT STRATEGY AREA

Introduction:

This document provides information about the Prescott Active Forest Management Strategy Area (AFMSA). It was generated by the Forest Industry Research Program of the Bureau of Business and Economic Research (BBER) at the University of Montana - Missoula. The mill survey data underlying these analyses were collected under joint venture agreements with the USDA Forest Service's Forest Inventory and Analysis program at the Pacific Northwest Research Station (#21-JV-11261979-053) and Rocky Mountain Research Station (#20-JV-11221638-171). The landscape analyses and summary tables were developed under agreement #23-PA-11132400-368, and the residuals tables were developed under agreement #25-JV-11261936-106.

The data used in these analyses are the results of periodic censuses of each of the western states, as well as annual sample surveys of the same. Using data from both types of surveys allows us to provide time-series data, though it necessitates providing estimates as percentages rather than actual volume.

While BBER collects data at the mill level, mill-level data are confidential and will not be released.

Methods and Definitions:

The Prescott AFMSA covers a defined area that includes pieces of several counties. The combined area of the counties "touched" by this area constitutes its "Study Area" (for details, see fig. 1 and table 1). Defining a Study Area that covers entire counties is necessary to enable analysis, as the county is the smallest geographic area of mill survey data by BBER and FIA-TPO.

Further, BBER analysis of timber flow indicates that timber harvested within the Study Area is processed by facilities located both inside and outside this specific area. All counties that contain one or more facilities that process timber harvested within the Study Area constitute the "Timber Processing Area" (TPA) (for details, see fig. 1 and table 4).

In these tables, "capacity" refers to the maximum total volume of timber (excluding pulpwood and fuelwood) that existing timber processors could utilize annually, given firm market demand for products, sufficient raw material, and ordinary downtime for maintenance. Also known as "timber-processing capacity", it is a measure of mills' timber input capacity and is expressed in thousand board feet (MBF) Scribner and hundred cubic feet (CCF) per year. Input capacity is a useful measure when attempting to express the capacity of multiple types of mills in a common unit of measure. It is estimated from production (output) capacity information provided by facilities.

Estimates in these tables include the capacity of active facilities as well as idle (inactive) facilities with equipment still in place. Facilities that are permanently closed are not included. This analysis focuses on facilities that exclusively use timber in round form; this includes sawmills, veneer mills, and facilities processing timber into house logs/log homes, posts, small poles, utility poles, cedar products (e.g., shakes and shingles), and log furniture. Facilities (e.g., pulp mills, wood pellet manufacturers, and biomass energy facilities) that use a mix of roundwood and non-roundwood inputs (i.e., mill residuals such as chips, sawdust, shavings, and bark) are not included in the capacity analysis because the combination of roundwood and non-roundwood inputs can vary widely from year to year, potentially over- or under-estimating capacity and use of roundwood by substantial margins.

“Capability” refers to the volume of trees of a certain size class (measured as diameter at breast height, or dbh) that existing timber processors can economically process annually. The three dbh classes are <7”, 7” to 9.9”, and ≥10”. Some facilities are designed to operate using only trees of a given size class (e.g., veneer/ plywood plants typically only use trees ≥10” dbh, and post manufacturers primarily use trees <10” dbh). The capability of these facilities is readily classified into just one size class. Many facilities can use timber from more than one size class.

“Use” refers to the volume of timber, both in total and by tree dbh class, that facilities are currently using.



Prescott AFMSA

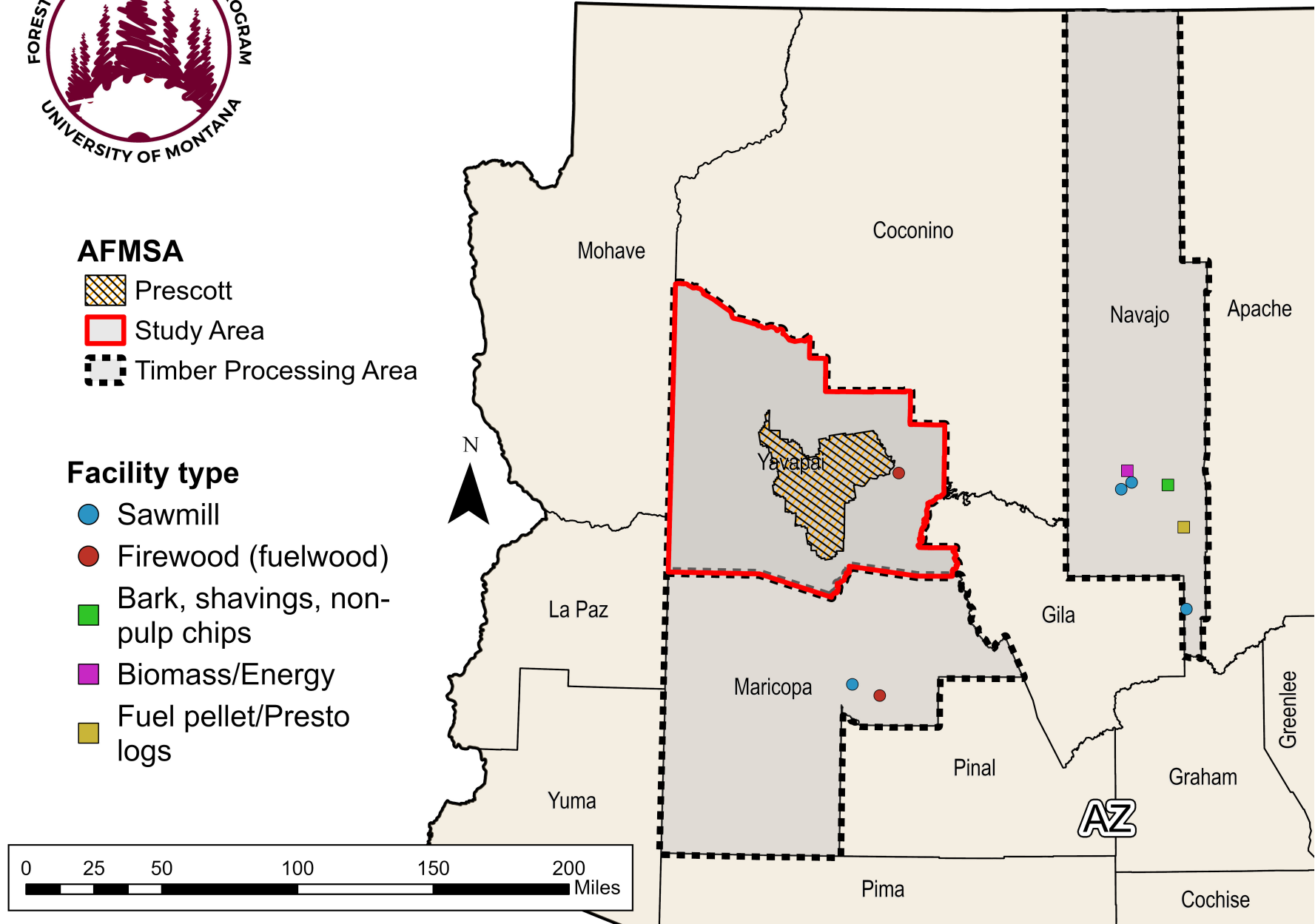


Figure 1. Prescott AFMSA landscape, Study Area, Timber-Processing Area, and facility locations

PRESCOTT STUDY AREA COUNTIES

Table 1. Prescott Study Area counties

County	State
Yavapai	AZ

PRESCOTT STUDY AREA HARVEST

Table 2. Timber harvest from the Prescott Study Area counties (all ownerships), percentage distribution by species (2020-2023)

Species group	2020	2021	2022	2023
Ponderosa pine	82%	63%	70%	61%
Douglas-fir	8%	16%	19%	17%
Other pines	4%	4%	0%	5%
Mesquite	3%	4%	0%	4%
Juniper	3%	4%	0%	4%
True firs	0%	9%	11%	9%
All species	100%	100%	100%	100%

Table 3. Percentage of timber harvest from national forest lands within the Prescott Study Area, by timber product type (2020-2023)

Timber product type	-----Percentage from national forests-----			
	2020	2021	2022	2023
Firewood	100%	100%	100%	100%
House/viga logs	100%	100%	n/a	n/a
Sawlogs	98%	100%	100%	100%
Study area total	100%	100%	100%	100%

Note: "n/a" indicates that no timber of this product type was harvested.

PRESCOTT TIMBER-PROCESSING AREA COUNTIES

Table 4. Prescott Timber-processing Area (TPA) counties

County	State
Maricopa	AZ
Navajo	AZ
Yavapai	AZ

PRESCOTT TIMBER-PROCESSING AREA FACILITIES LIST

Table 5. Timber-processing facilities within the Prescott TPA (2025)

Facility name	Status	Facility type	State	County	Input size class	Included in capacity analysis
Southwest Forest Products	Active	sawmill	AZ	Maricopa	1000 to 4999 MCF	Yes
Paul Bunyan's Firewood	Active	firewood	AZ	Maricopa	<250 MCF	Yes
Bowen Poles	Active	sawmill	AZ	Maricopa	No roundwood	No
White Mountain Apache Timber Company	Active	sawmill	AZ	Navajo	1000 to 4999 MCF	No
Forest Energy Corporation	Active	pellets	AZ	Navajo	1000 to 4999 MCF	Yes
Winner's Circle Soil Products	Active	bark	AZ	Navajo	<250 MCF	Yes
New Life Forest Products	Active	sawmill	AZ	Navajo	1000 to 4999 MCF	Yes
Novo Star Wood Products	Active	sawmill	AZ	Navajo	1000 to 4999 MCF	Yes
Novo Biopower, LLC	Active	biomass/energy	AZ	Navajo	n/a	No
Canyon Wood	Active	firewood	AZ	Yavapai	1000 to 4999 MCF	Yes

TIMBER RECEIVED BY FACILITIES IN THE PRESCOTT TIMBER-PROCESSING AREA

Table 6. Timber received by facilities in the Prescott TPA, percentage distribution by species (2020-2023)

Species group	2020	2021	2022	2023
Ponderosa pine	89%	86%	86%	82%
Douglas-fir	6%	8%	10%	10%
Juniper	2%	1%	0%	1%
Pinyon pine	2%	1%	0%	1%
Mesquite	2%	1%	0%	1%
White fir	0%	3%	4%	5%
Engelmann spruce	0%	0%	0%	0%
All species	100%	100%	100%	100%

Table 7. Percentage of timber from national forests received by facilities in the Prescott TPA, by timber product group (2020-2023)

Timber product type	-----Percentage from national forests-----			
	2020	2021	2022	2023
Sawlogs	100%	75%	76%	71%
Viga logs	100%	100%	n/a	n/a
Firewood	100%	100%	n/a	n/a
Fiber logs/Energy logs	70%	90%	90%	90%
TPA total	83%	99%	98%	86%

Note: "n/a" indicates that no timber of this product type was harvested.

TIMBER-PROCESSING CAPACITY AND CAPABILITY OF MILLS WITHIN THE PRESCOTT TIMBER-PROCESSING AREA

Table 8. Timber-processing capacity and capability by tree dbh class of facilities in the Prescott TPA (2021)

Timber Processing Area	-----Thousand board feet, Scribner (MBF)-----			-----Hundred cubic feet (CCF)-----		
	<7 in. dbh	7 - 9.9 in. dbh	≥10 in. dbh	<7 in. dbh	7 - 9.9 in. dbh	≥10 in. dbh
Maricopa, Navajo and Yavapai	1,023	20,229	78,641	2,983	47,914	150,365
Total	1,023	20,229	78,641	2,983	47,914	150,365

Table 9. Timber-processing capacity and capability by tree dbh class of facilities in the Prescott TPA, by timber product type (2021)

Timber product type	----Thousand board feet, Scribner (MBF)----			-----Hundred cubic feet (CCF)-----		
	<7 in. dbh	7 - 9.9 in. dbh	≥10 in. dbh	<7 in. dbh	7 - 9.9 in. dbh	≥10 in. dbh
Firewood logs	551	4,961	-	2,080	18,722	-
Saw logs	472	15,268	78,641	902	29,192	150,365
Total	1,023	20,229	78,641	2,983	47,914	150,365

Table 10. Total timber-processing capacity, timber consumption, and capacity utilization of facilities in the Prescott TPA, by dbh class (2021)

Tree dbh	----Capacity to process timber----		-----Timber consumption-----		Capacity utilization
	Thousand board feet, Scribner (MBF)	Hundred cubic feet (CCF)	Thousand board feet, Scribner (MBF)	Hundred cubic feet (CCF)	
<7 in.	1,023	2,983	376	718	24%
7 - 9.9 in.	20,229	47,914	8,386	25,352	53%
≥10 in.	78,641	150,365	52,292	100,176	67%
Total	99,893	201,261	61,054	126,245	63%

Table 11. Unused timber-processing capacity of facilities in the Prescott TPA (2021)

Timber Processing Area	Thousand board feet, Scribner (MBF)	Hundred cubic feet (CCF)
Maricopa, Navajo and Yavapai	38,839	75,016
Total	38,839	75,016

Table 12. Unused timber-processing capacity of facilities in the Prescott TPA, by timber products type (2021)

Timber product type	Thousand board feet, Scribner (MBF)	Hundred cubic feet (CCF)
Saw logs	38,434	73,489
Firewood logs	405	1,527
Total	38,839	75,016

RESIDUALS GENERATED BY TIMBER-PROCESSING FACILITIES IN THE PRESCOTT TIMBER-PROCESSING AREA

Table 13. Mill residuals generated by timber-processing facilities within the Prescott TPA (2021)

	BDUs ^a	Percent of total volume
Utilized residuals volume	82,470	100%
Unutilized residuals volume	-	0%
Total volume generated	82,470	100%

^a One bone dry unit (BDU) = 2,400 pounds of oven-dry wood or bark.

Table 14. Mill residuals generated by timber-processing facilities within the Prescott TPA, by type of residual (2021)

Type of residual	BDUs ^a	Percent of total volume
Coarse ^b	50,214	61%
Fine ^c	17,429	21%
Bark	14,827	18%
Total, all residual types	82,470	100%

^a One bone dry unit (BDU) = 2,400 pounds of oven-dry wood or bark.

^b Includes slabs, edgings, and trimmings from lumber manufacturing; log ends; pieces of veneer not suitable for manufacturing plywood; and plywood peeler cores not sawn into lumber.

^c Includes sawdust, peelings and shavings.

Table 15. Mill residuals generated by timber-processing facilities within the Prescott TPA, by type of utilization (2021)

Type of utilization	BDUs ^a	Percent of total volume
Fuel ^b	42,896	52%
Mulch/soil additives	17,642	21%
Sold as raw material for other products	15,005	18%
Animal bedding	4,204	5%
Decorative landscaping	2,724	3%
Used on-site for other products	-	0%
Fiber ^c	-	0%
Unused	-	0%
Total, all types of utilization	82,470	100%

^a One bone dry unit (BDU) = 2,400 pounds of oven-dry wood or bark.

^b Includes firewood, biomass, hogfuel, and pellets.

^c Includes pulp, composite panels, and MDF.