



PLUMAS ACTIVE FOREST MANAGEMENT STRATEGY AREA

Introduction:

This document provides information about the Plumas Active Forest Management Strategy Area (AFMSA). It was generated by the Forest Industry Research Program of the Bureau of Business and Economic Research (BBER) at the University of Montana - Missoula. The mill survey data underlying these analyses were collected under joint venture agreements with the USDA Forest Service's Forest Inventory and Analysis program at the Pacific Northwest Research Station (#21-JV-11261979-053) and Rocky Mountain Research Station (#20-JV-11221638-171). The landscape analyses and summary tables were developed under agreement #23-PA-11132400-368, and the residuals tables were developed under agreement #25-JV-11261936-106.

The data used in these analyses are the results of periodic censuses of each of the western states, as well as annual sample surveys of the same. Using data from both types of surveys allows us to provide time-series data, though it necessitates providing estimates as percentages rather than actual volume.

While BBER collects data at the mill level, mill-level data are confidential and will not be released.

Methods and Definitions:

The Plumas AFMSA covers a defined area that includes pieces of several counties. The combined area of the counties "touched" by this area constitutes its "Study Area" (for details, see fig. 1 and table 1). Defining a Study Area that covers entire counties is necessary to enable analysis, as the county is the smallest geographic area of mill survey data by BBER and FIA-TPO.

Further, BBER analysis of timber flow indicates that timber harvested within the Study Area is processed by facilities located both inside and outside this specific area. All counties that contain one or more facilities that process timber harvested within the Study Area constitute the "Timber Processing Area" (TPA) (for details, see fig. 1 and table 4).

In these tables, "capacity" refers to the maximum total volume of timber (excluding pulpwood and fuelwood) that existing timber processors could utilize annually, given firm market demand for products, sufficient raw material, and ordinary downtime for maintenance. Also known as "timber-processing capacity", it is a measure of mills' timber input capacity and is expressed in thousand board feet (MBF) Scribner and hundred cubic feet (CCF) per year. Input capacity is a useful measure when attempting to express the capacity of multiple types of mills in a common unit of measure. It is estimated from production (output) capacity information provided by facilities.

Estimates in these tables include the capacity of active facilities as well as idle (inactive) facilities with equipment still in place. Facilities that are permanently closed are not included. This analysis focuses on facilities that exclusively use timber in round form; this includes sawmills, veneer mills, and facilities processing timber into house logs/log homes, posts, small poles, utility poles, cedar products (e.g., shakes and shingles), and log furniture. Facilities (e.g., pulp mills, wood pellet manufacturers, and biomass energy facilities) that use a mix of roundwood and non-roundwood inputs (i.e., mill residuals such as chips, sawdust, shavings, and bark) are not included in the capacity analysis because the combination of roundwood and non-roundwood inputs can vary widely from year to year, potentially over- or under-estimating capacity and use of roundwood by substantial margins.

“Capability” refers to the volume of trees of a certain size class (measured as diameter at breast height, or dbh) that existing timber processors can economically process annually. The three dbh classes are <7”, 7” to 9.9”, and ≥10”. Some facilities are designed to operate using only trees of a given size class (e.g., veneer/ plywood plants typically only use trees ≥10” dbh, and post manufacturers primarily use trees <10” dbh). The capability of these facilities is readily classified into just one size class. Many facilities can use timber from more than one size class.

“Use” refers to the volume of timber, both in total and by tree dbh class, that facilities are currently using.

Plumas AFMSA

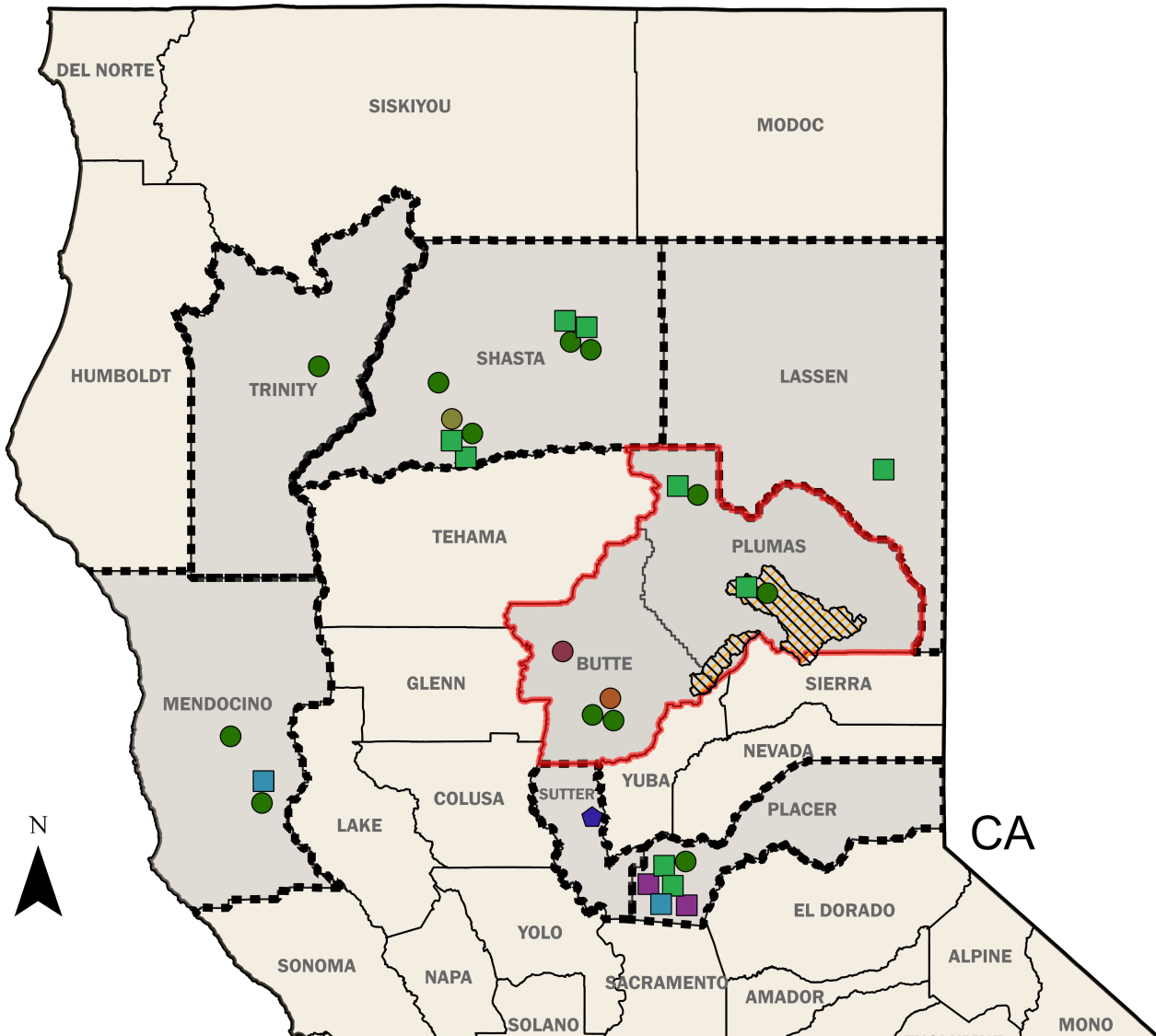
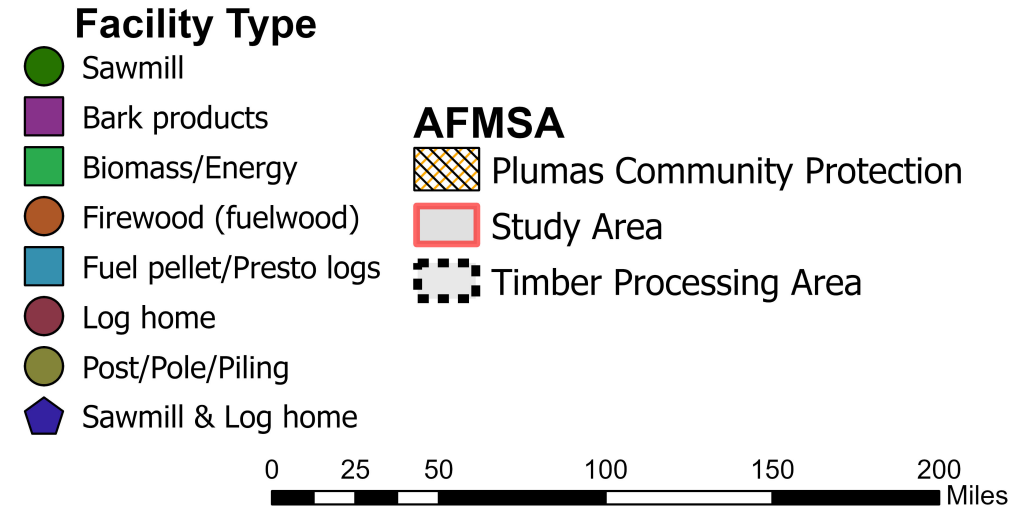


Figure 1. Plumas AFMSA landscape, Study Area, Timber-Processing Area, and facility locations

PLUMAS STUDY AREA COUNTIES

Table 1. Plumas Study Area counties

County	State
Butte	CA
Plumas	CA

PLUMAS STUDY AREA HARVEST

Table 2. Timber harvest from Plumas Study Area counties (all ownerships), by percentage distribution by species (2020-2023)

Species group	2020	2021	2022	2023
True firs	44%	34%	35%	36%
Hemlock/Douglas-fir	21%	20%	21%	21%
Ponderosa pine	21%	30%	30%	30%
Other pines	9%	11%	10%	8%
Cedars	3%	3%	2%	2%
Hardwoods	1%	1%	1%	1%
Lodgepole pine	0%	1%	1%	1%
All species	100%	100%	100%	100%

Table 3. Percentage of timber harvest from national forest lands within the Plumas Study Area, by timber product type (2020-2023)

	-----Percentage from national forests-----			
Timber product type	2020	2021	2022	2023
Saw logs	0%	0%	0%	0%
Veneer logs	n/a	n/a	n/a	n/a
House logs	0%	0%	0%	0%
Fiberlogs/chips/energy	n/a	n/a	0%	0%
Firewood	0%	0%	0%	0%
Posts/poles/furniture logs	n/a	n/a	n/a	n/a
Pilings/utility poles	0%	0%	0%	n/a
All timber products	0%	0%	0%	0%

Note: "n/a" indicates that no timber of this product type was harvested within the Study Area.

PLUMAS TIMBER-PROCESSING AREA COUNTIES

Table 4. Plumas Timber-Processing Area (TPA) counties

County	State
Butte	CA
Lassen	CA
Mendocino	CA
Placer	CA
Shasta	CA
Sutter	CA
Trinity	CA

PLUMAS TIMBER-PROCESSING AREA FACILITIES LIST

Table 5. Timber-processing facilities within the Plumas TPA (2025)

Facility name	Status	Facility type	State	County	Input size class	Included in capacity
						analysis
Hot Wood - California	Active	firewood (fuelwood)	CA	Butte	1000 TO 4999 MCF	Yes
Sierra Log Homes	Active	log home	CA	Butte	<250 MCF	Yes
SPI - Oroville Sawmill	Active	sawmill	CA	Butte	5000 MCF or more	Yes
Apex Lumber Co	Active	sawmill	CA	Butte	<250 MCF	Yes
Honey Lake Power	Active	biomass/energy	CA	Lassen	<250 MCF	Yes
MFP - Forest Energy Mendocino	Active	fuel pellet/presto logs	CA	Mendocino	No Roundwood	No
Willits Redwood Company	Active	sawmill	CA	Mendocino	1000 TO 4999 MCF	Yes
Mendocino Forest Products - Ukiah	Active	sawmill	CA	Mendocino	5000 MCF or more	Yes
Mallard Creek - Bark	Active	bark products	CA	Placer	No Roundwood	No
Mallard Creek - Animal Bedding	Active	bark products	CA	Placer	No Roundwood	No
SPI - Lincoln Cogen	Active	biomass/energy	CA	Placer	No Roundwood	No
Rio Bravo Rocklin	Active	biomass/energy	CA	Placer	No Roundwood	No
Mallard Creek - Pellets	Active	fuel pellet/presto logs	CA	Placer	No Roundwood	No
SPI - Lincoln Sawmill	Active	sawmill	CA	Placer	5000 MCF or more	Yes
Collins Pine CoGen	Active	biomass/energy	CA	Plumas	No Roundwood	No
SPI - Quincy Cogen	Active	biomass/energy	CA	Plumas	No Roundwood	No
Collins Pine Sawmill	Active	sawmill	CACA	Plumas	5000 MCF or more	Yes
SPI - Quincy Sawmill	Active	sawmill	CA	Plumas	5000 MCF or more	Yes
Burney Forest Products	Active	biomass/energy	CA	Shasta	No Roundwood	No
Shasta-Sustainable Resource Management, Inc.	Active	biomass/energy	CA	Shasta	<250 MCF	Yes
SPI - Burney Cogen	Active	biomass/energy	CA	Shasta	No Roundwood	No
SPI - Anderson Cogen	Active	biomass/energy	CA	Shasta	No Roundwood	No
SPI - Anderson Pole	Active	post/pole/piling	CA	Shasta	1000 TO 4999 MCF	Yes
Shasta Green Inc.	Active	sawmill	CA	Shasta	5000 MCF or more	Yes
SPI - Burney Sawmill	Active	sawmill	CA	Shasta	5000 MCF or more	Yes
SPI - Anderson Sawmill	Active	sawmill	CA	Shasta	5000 MCF or more	Yes
SPI - Shasta Lake Sawmill	Active	sawmill	CA	Shasta	5000 MCF or more	Yes
Unity Forest Products	Active	sawmill & log home	CA	Sutter	500 TO 999 MCF	Yes
TRL - Trinity River Lumber Co	Active	sawmill	CA	Trinity	5000 MCF or more	Yes

TIMBER RECEIVED BY TIMBER-PROCESSING FACILITIES IN THE PLUMAS TIMBER-PROCESSING AREA

Table 6. Timber received by facilities in the Plumas TPA, percentage distribution by species (2020-2023)

Species group	2020	2021	2022	2023
True firs	40%	31%	35%	36%
Hemlock/Douglas-fir	23%	25%	25%	22%
Ponderosa pine	17%	25%	27%	28%
Other pines	10%	14%	9%	9%
Lodgepole pine	6%	1%	1%	1%
Cedars	3%	4%	2%	5%
Hardwoods	2%	0%	1%	1%
All species	100%	100%	100%	100%

Table 7. Percentage of timber from national forests received by facilities in the Plumas TPA, by timber product type (2020-2023)

Timber product type	-----Percentage from national forests-----			
	2020	2021	2022	2023
Saw logs	20%	12%	11%	10%
Other products	13%	0%	4%	21%
TPA total	18%	11%	11%	10%

**TIMBER-PROCESSING CAPACITY AND CAPABILITY OF TIMBER-PROCESSING FACILITIES WITHIN THE PLUMAS
TIMBER-PROCESSING AREA**

Table 8. Timber-processing capacity and capability by tree dbh class of facilities in the Plumas TPA, by county or county group (2021)

Timber Processing Area ^a	-----Thousand board feet, Scribner (MBF)-----			-----Hundred cubic feet (CCF)-----		
	<7 in. dbh	7 - 9.9 in. dbh	≥10 in. dbh	<7 in. dbh	7 - 9.9 in. dbh	≥10 in. dbh
Butte	254	6,022	33,411	724	13,927	66,162
Mendocino	562	14,241	50,443	1,114	28,200	99,886
Placer & Sutter	2,193	17,806	201,549	4,343	35,261	399,108
Plumas	1,748	16,318	215,048	3,462	32,312	425,837
Shasta & Trinity	6,888	64,092	425,697	13,640	126,893	842,435
Total	11,645	118,479	926,147	23,282	236,592	1,833,428

^aLassen County is in the Timber Processing Area but has only a facility that takes both roundwood and non-roundwood inputs and, therefore, timber-processing capacity cannot be accurately calculated.

Table 9. Timber-processing capacity and capability by tree dbh class of facilities in the Plumas TPA, by timber product type (2021)

Timber product type	-----Thousand board feet, Scribner (MBF)-----			-----Hundred cubic feet (CCF)-----		
	<7 in. dbh	7 - 9.9 in. dbh	≥10 in. dbh	<7 in. dbh	7 - 9.9 in. dbh	≥10 in. dbh
Saw logs	11,392	115,723	916,727	22,558	229,155	1,815,302
Other ^a	254	2,755	9,420	724	7,436	18,126
Total	11,645	118,479	926,147	23,282	236,592	1,833,428

^aOther timber product types includes house logs, firewood, and piling/utility poles.

Table 10. Total timber-processing capacity, timber consumption, and capacity utilization of facilities in the Plumas TPA, by dbh class (2021)

Tree dbh	----Capacity to process timber----		-----Timber consumption-----		Capacity utilization
	Thousand board feet, Scribner (MBF)	Hundred cubic feet (CCF)	Thousand board feet, Scribner (MBF)	Hundred cubic feet (CCF)	
<7 in.	11,645	23,282	1,305	2,583	11%
7 - 9.9 in.	118,479	236,592	38,719	78,478	33%
≥10 in.	926,147	1,833,428	874,826	1,731,921	94%
Total	1,056,271	2,093,302	914,850	1,812,983	87%

Table 11. Unused timber-processing capacity of facilities in the Plumas TPA, by county or county group (2021)

Timber Processing Area	Thousand board feet, Scribner (MBF)	Hundred cubic feet (CCF)
Butte	11,971	24,076
Mendocino	1,125	2,227
Placer & Sutter	39,298	77,818
Plumas	39,629	78,474
Shasta & Trinity	49,398	97,723
Total	141,421	280,319

^aLassen County is in the Timber Processing Area but has only a facility that takes both roundwood and non-roundwood inputs and, therefore, timber-processing capacity cannot be

Table 12. Unused timber-processing capacity of facilities in the Plumas TPA, by timber product type (2021)

Timber product type	Thousand board feet, Scribner (MBF)	Hundred cubic feet (CCF)
Saw logs	139,356	275,952
Other ^a	2,065	4,367
Total	141,421	280,319

^aOther timber product types includes house logs, firewood, and piling/utility poles.

RESIDUALS GENERATED BY TIMBER-PROCESSING FACILITIES IN THE PLUMAS TIMBER-PROCESSING AREA

Table 13. Mill residuals generated by timber-processing facilities within the Plumas TPA (2021)

	BDUs ^a	Percent of total volume
Utilized residuals volume	1,345,664	100.00%
Unutilized residuals volume	25	0.00%
Total volume generated	1,345,689	100.00%

^a One bone dry unit (BDU) = 2,400 pounds of oven-dry wood or bark.

Table 14. Mill residuals generated by timber-processing facilities within the Plumas TPA, by type of residual (2021)

Type of residual	BDUs ^a	Percent of total volume
Coarse ^b	536,649	40%
Fine ^c	466,984	35%
Bark	342,055	25%
Total, all residual types	1,345,689	100%

^a One bone dry unit (BDU) = 2,400 pounds of oven-dry wood or bark.

^b Includes slabs, edgings, and trimmings from lumber manufacturing; log ends; pieces of veneer not suitable for manufacturing plywood; and plywood peeler cores not sawn into lumber.

^c Includes sawdust, peelings and shavings.

Table 15. Mill residuals generated by timber-processing facilities within the Plumas TPA, by type of utilization (2021)

Type of utilization	BDUs ^a	Percent of total volume
Fuel ^b	836,245	62%
Mulch/soil additives	136,488	10%
Fiber ^c	132,105	10%
Animal bedding	103,652	8%
Decorative landscaping	99,511	7%
Sold as raw material for other products	37,663	3%
Used on-site for other products	-	0%
Unused	25	0%
Total, all types of utilization	1,345,689	100%

^a One bone dry unit (BDU) = 2,400 pounds of oven-dry wood or bark.

^b Includes firewood, biomass, hogfuel, and pellets.

^c Includes pulp, composite panels, and MDF.